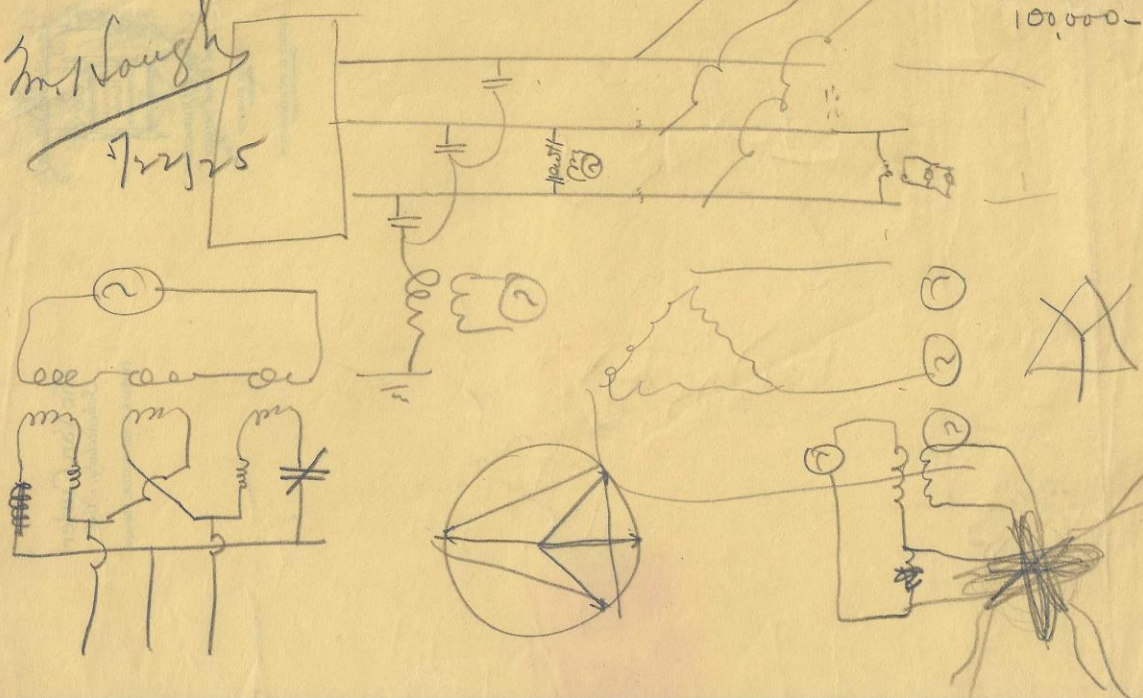
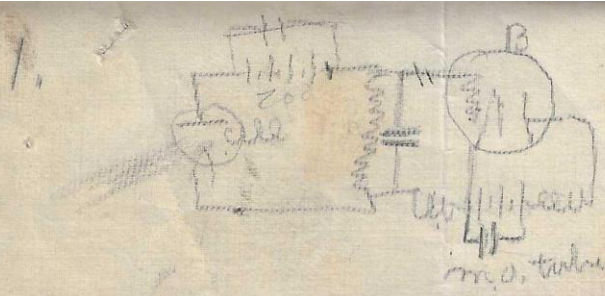


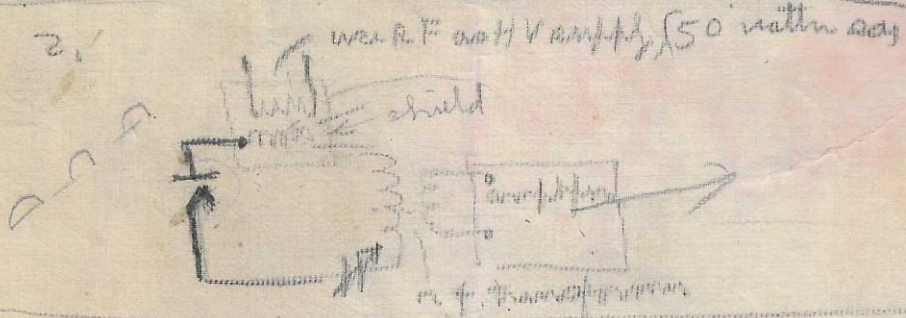
Mr. Laugh
7/22/25

1,000,000
100,000-





B is oscillating
at radio freq,
the circuit when
light falls on
cell as bias
on its grid
starts it

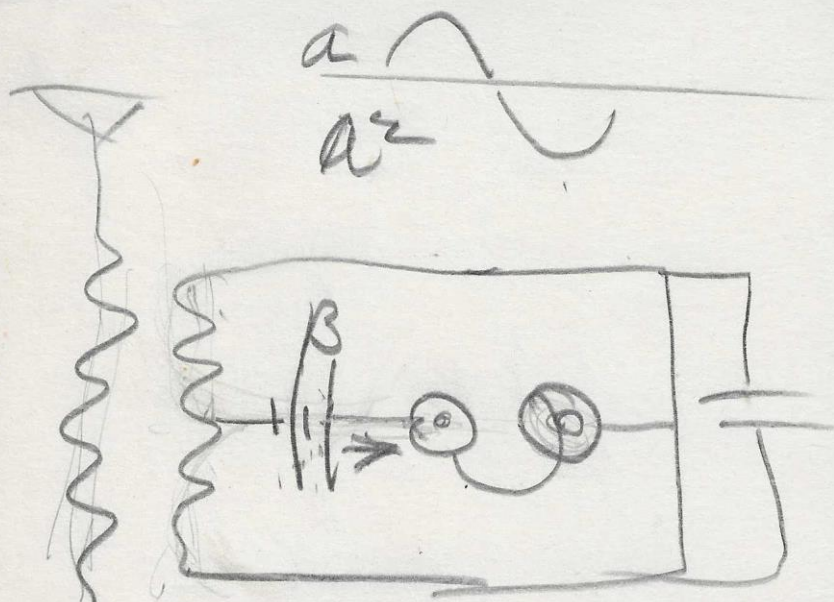


tube oscillates /
oscillating but
when cell
becomes conductive
B that is shorted
(with B connection)



when cell becomes
conductive
plate gets + charge
& tube oscillates

Sumner 6/13/21



$$a + B = 2a$$

$$a^2 - B = 0$$

P. H. H.
 Rec. 3, 1926
 12/3/26

