

Television Apparatus

EXPERIMENTAL TELEVISION APPARATUS. Television in its present stage being an undeveloped art, we display Television apparatus here and offer it for experimental purposes only. We do not advocate its use nor do we offer Television material under any guarantee whatsoever. **THIS IS EXPERIMENTAL EQUIPMENT AND IS NOT SUBJECT**

TO RETURN FOR CREDIT OR REFUND UNDER ANY CONDITION. We cannot guarantee its safe delivery and in the event of damaged shipments the purchaser is advised to file claim with the carrier. We offer on display here only merchandise made by nationally known, reputable manufacturers.

Raytheon Kino-Lamp



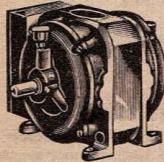
Glow lamp for Television receivers. A Neon type tube having a plate 1 1/4 in. square presenting a glow area of 2 1/4 square inches. Uniform glow over the entire plate without the use of mirrors or ground glass gives it perfect reproduction qualities. Starting voltage 220 to 235 volts.

No. 7151. List **\$6.17**
\$10.50. YOUR PRICE

Raytheon Photo Electric Cell

Light, sensitive tube for Television transmitting apparatus.
No. 7152. List \$20.00. **\$11.76**
YOUR PRICE

TELEVISION MOTOR



A.C. induction motor for Television. Constant or variable speed with ease of control. Highly efficient, cool running. Quiet and clean. Has no brushes or commutators consequently producing no radio interference. Single phase 1800 R.P.M. recommended for receiving sets using 24 inch scanning disc. Very easy to maintain any speed between 750 and 1700 R.P.M. with 5 to 45 ohm variable resistance. 1/2 H.P. 110 volt 60 cycle A.C.

No. 7153. List \$30.00. **\$19.11**
YOUR PRICE
No. 7159. Machined flange for scanning disc. List \$3.00. **\$1.91**
YOUR PRICE
No. 7160. Rubber cushion base. List \$2.50. YOUR PRICE **\$1.60**

TELEVISION MAGAZINE

Keep up to the minute with Television development. Television magazine published monthly with latest information data and circuits.

No. 4319. List, 35c. YOUR PRICE.. **21c**

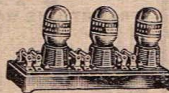
DAVEN TELEVISION KIT



Latest Television Daven Essential Kit complete. Furnished with scanning disc, motor bushing, rheostat bushing, neon tube and three complete stages of amplification.

No. 7154. List \$60.00. **\$38.22**
YOUR PRICE
DAVEN SPECIAL MOTOR
No. 7161. List \$25.00. **\$15.92**
YOUR PRICE

Daven Television Amplifier



Type 3-T with resistors and coupling condenser. Amplifying perfection. The only suitable type of amplifier for Television reception.

No. 7155. List \$12.50. YOUR **\$7.98**
PRICE

TELEVISION AMPLIFIER



High quality resistant coupled amplifier for Television receivers. Ordinary forms of amplification are unsuitable for Television due to their unequal frequency curves. Resistance coupling is practically the only true amplifier for straight line amplification and is consequently highly suitable for Television. Wt. 2 lbs.

No. 3129. List \$8.00. YOUR **\$4.30**
PRICE

Daven Television Lamp

Will give excellent illumination with a current of 20 milliamperes or less. Designed to operate with an output tube in series. Where extremely bright illumination is required the tube may be loaded up to 80 milliamperes by means of suitable output tubes. Striking voltage 160. Plate area 1 1/2 square.

No. 7156. List **\$8.57**
\$12.50. YOUR PRICE

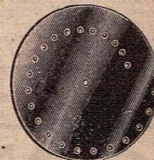
No. 7157. Daven A.C. 71 tube. For output type tube in series with Television lamp. List \$3.50. **\$2.40**
YOUR PRICE

No. 7158. Daven A.C. 10 Tube. Output tube for use in series with Television lamp for brighter illumination. List \$9.00. YOUR PRICE **\$6.17**

SCANNING DISCS

Accurately designed scanning discs with holes properly laid out to prevent distortion. For receiving 1 1/2 x 1 1/2 pictures.

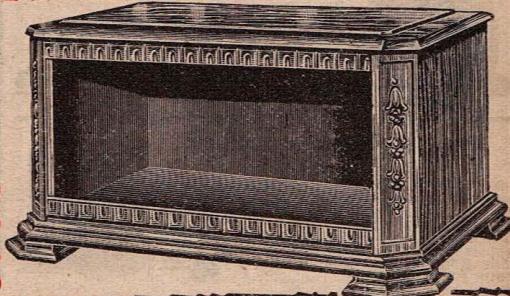
No. 7165. 24 aperture disc. List \$5.00. YOUR PRICE.. **\$3.18**
No. 7166. 36 aperture disc. List \$7.50. YOUR PRICE.. **4.78**
No. 7167. 45 aperture disc. List \$10.00. YOUR PRICE.. **6.37**
No. 7168. 48 aperture disc. List \$10.00. YOUR PRICE.. **6.37**
No. 7169. Bushing to fit 1/4 in. motor shaft. List \$1.00. **.64**
YOUR PRICE
No. 7170. Special large size bushing for 45 and 48 line discs. List \$3.50. YOUR PRICE **2.23**



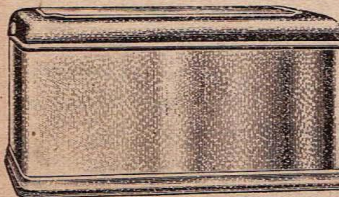
Walnut Carved Cabinets

One of the most beautiful walnut cabinets ever designed. Attractive, graceful lines. Finely finished, hand rubbed. Beautiful in appearance. Perfectly matched grain and color. Quality workmanship. Full 12" depth.

No.	Size	Shpg. wt.	List	NET
9151	7x18	22 lbs.	\$21.00	\$ 8.55
9152	7x21	24 lbs.	22.00	9.69
9153	7x24	26 lbs.	22.50	10.26
9154	7x26	30 lbs.	23.00	10.83
9155	7x28	32 lbs.	23.50	11.40



Metal Cabinets

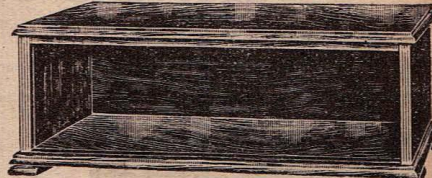


Richly finished metal cabinets. Finely designed. Beautiful, graceful lines. Will accommodate any set requiring 7x18 or 8x18 panel. Front of cabinet may be used as panel for direct mounting of dial or escutch-

eon plate. Full 13 in. depth. Wt. 10 lbs. Beautiful colored finishes Offered in Bronze Crackle, Chinese Red and Green.

Chinese and green finishes have polychrome gold effect.
No. 9164. Bronze **YOUR**
No. 9165. Chinese Red **SPECIAL**
No. 9166. Green **PRICE** **\$4.80**

Deluxe Mahogany Cabinets



Beautiful, hand rubbed mahogany finished cabinets. Finely constructed and durable. Grooved for 3-16 in. panels. Wonderful values. All sizes 10 in. deep.

No.	Size	Shpg. Wt., lbs.	YOUR PRICE	No.	Size	Shpg. Wt., lbs.	YOUR PRICE
9157	7x18	15	\$3.95	9160	7x26	20	\$4.95
9158	7x21	17	4.40	9161	7x28	22	5.25
9159	7x24	18	4.70	9162	7x30	24	5.85

Television Apparatus

EXPERIMENTAL TELEVISION APPARATUS. Television in its present stage being an undeveloped art, we display Television apparatus here and offer it for experimental purposes only. We do not advocate its use nor do we offer Television material under any guarantee whatsoever. THIS IS EXPERIMENTAL EQUIPMENT AND IS NOT SUBJECT

TO RETURN FOR CREDIT OR REFUND UNDER ANY CONDITION. We cannot guarantee its safe delivery and in the event of damaged shipments the purchaser is advised to file claim with the carrier. We offer on display here only merchandise made by NATIONALLY KNOWN, REPUTABLE MANUFACTURERS.

I. C. A. Universal Television Motors



Non-sparking ICA Universal Motor for operating receiving scanning disc. Universal motor (AC or DC). Easily controlled by rheostat. With 1/4-in. shaft.
No. 7161. List \$27.50. **\$16.17**
NET

No. 7162. Special single Phase 1/15 H. P., 110 volts, 60 cycle motor. Resistance controlled—1800 R.P.M. Will operate 12 in. to 24 in. scanning discs. 1/4 in. shaft.
List \$35.00. **\$20.58**
NET

No. 7163. Chuck to fit 1/4 in. motor shaft.
List \$3.50. **\$2.06**
NET

Speed Regulating Rheostat

Motor speed regulator.
No. 7164. List \$3.00. **\$1.76**
YOUR PRICE



Raytheon Kino Lamp

A Neon type tube for Television receivers. Offers a plate 1 1/2 in. square with a glow area of 2 1/4 sq. in. Uniform glow over the entire plate provides perfect reproduction qualities. Starting voltage 220 to 255 volts. Wt., 10 oz.
No. 7151. List \$7.50. **\$4.41**
YOUR PRICE



Television Amplifier

The ICA four stage amplifier, complete with all resistors and coupling condensers. Wired so that two power tubes may be used in parallel. Any power tube will serve, although two 6V6, 171 or 219 in the output are recommended. Battery connections on all stages are mounted on the amplifier. Tubes not included.

No. 7150. List \$17.50. **\$10.29**
YOUR PRICE

I. C. A. Complete Essential Television Kit Model 52

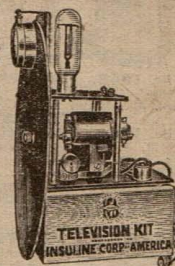
A television essential kit comprising—1 bakelite scanning disc, 48 holes; Universal motor; speed control; motor chuck; telescope with 2 lenses; screws and lense bracket; bakelite sub-base for motor; receptacle cord and plug; sub-base with socket for television lamp; picture frame shield; bakelite pillars; four stage television amplifier; brackets, screws and hardware. Television and amplifier tubes are not included.
No. 8796. List \$52.50. **\$30.87**
YOUR PRICE

Model 65

No. 8797. Same as Model 52, but includes television tube.
List \$65.00. **\$38.22**
YOUR PRICE

Model B-1

No. 8798. Special television kit, but without amplifier or television tube.
List \$37.50. **\$22.05**
YOUR PRICE



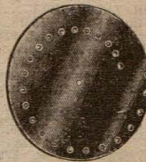
Scanning Discs and Essentials

The I. C. A. bakelite scanning discs have been designed and constructed in accordance with Bell Laboratory specifications. The holes are laid out mathematically correct to avoid distortion. For 1 1/2 x 1 1/2 in. pictures.

No. 8793. 24 aperture disc. List \$5.00. **\$2.94**
YOUR PRICE

No. 8794. 48 aperture disc. List \$9.00. **\$5.29**
YOUR PRICE

No. 8795. Universal disc of aluminum. Combination 24, 36, and 48 lines. List \$15.00. **\$8.82**
YOUR PRICE



Special Magnifying Ground Glass

Special Magnifying and ground glass enclosed in a telescope complete.

No. 7165. List \$2.94 **\$2.94**
\$5.00. NET

Picture Shield

Outfit consisting of two bakelite special base panels, one picture shield, brackets, insulated pillars, screws, hardware, etc.

No. 7166. List \$7.50. **\$4.41**
NET

Speed Control Kit

Speed control, hardware, receptacle, wire, cord, brackets, etc.
No. 7167. List \$5.00. **\$2.94**
NET



Television Tube and Photo Electric Cells

A television tube with a UX four-prong bakelite base. Striking voltage 100; minimum current, 5 mills, maximum, 80 mills; internal resistance, 1000 ohms; plate area, 1 1/2 in. sq.

No. 7152. List \$10.00. **\$5.88**
YOUR PRICE

No. 7153. Photo-Electric cell, 1 1/4-in. bulb diameter. List \$20.00. **\$11.76**
YOUR PRICE

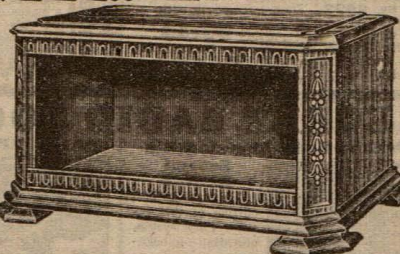
No. 7154. Photo-Electric cell, 3-in. bulb diameter. List \$37.50. **\$22.05**
YOUR PRICE



WALNUT CARVED CABINETS

One of the most beautiful walnut cabinets ever designed. Attractive, graceful lines. Finely finished, hand rubbed. Beautiful in appearance—perfectly matched grain and color. Quality workmanship. Full 12 in. depth.

No.	Size	Wt.	List	Your Price
No. 8650.	Size, 7x18.	Wt., 22 lbs.	List, \$21.00	\$8.55
No. 8651.	Size, 7x21.	Wt., 24 lbs.	List, 22.00	9.69
No. 8652.	Size, 7x24.	Wt., 26 lbs.	List, 22.50	10.26
No. 8653.	Size, 7x26.	Wt., 30 lbs.	List, 23.00	10.83
No. 8654.	Size, 7x28.	Wt., 32 lbs.	List, 23.50	11.40



DE LUXE MAHOGANY CABINETS

Beautiful, hand rubbed mahogany finished cabinets. Finely constructed and durable. Grooved for 3/16 in. panels. Wonderful values. All sizes 10 in. deep.



No.	Size	Shipping Wt.	YOUR PRICE	No.	Size	Shipping Wt.	YOUR PRICE
8660	7x18	15 lbs.	\$3.95	8663	7x26	20 lbs.	\$4.95
8661	7x21	17 lbs.	4.40	8664	7x28	22 lbs.	5.25
8662	7x24	18 lbs.	4.70	8665	7x30	24 lbs.	5.85

THE LATEST Television DEVELOPMENTS

EXPERIMENTAL TELEVISION APPARATUS. Television in its present stage being an undeveloped art, we display Television apparatus here and offer it for experimental purposes only. We do not advocate its use nor do we offer Television material under any guarantee whatsoever. THIS IS EXPERIMENTAL EQUIPMENT AND IS NOT SUBJECT TO RETURN FOR CREDIT OR

REFUND UNDER ANY CONDITION. We cannot guarantee its safe delivery and in the event of damaged shipments the purchaser is advised to file claim with the carrier. We offer on display here only merchandise made by NATIONALLY KNOWN, REPUTABLE MANUFACTURERS.

NEW I. C. A. TELEVISION RECEIVER

A giant step forward in the development of Television by the Insuline Corporation of America. Simplified complete equipment, which may be operated outside a cabinet or inserted in almost any console. It will entertain the novice, as well as aid the experimenter in his work.

With Speed Control

This new receiver is provided with a speed control which offers synchronization of the pictures and signals. Will perform with almost any short wave receiver capable of tuning in Television Signals. Additional component parts and a five inch lens and visor, by which the pictures are greatly magnified, and a 48-hole scanning disc. Furnished in knock-down form.

No. A8242 List \$75.00.
YOUR PRICE

\$44¹⁰

No. A4234 Television Amplifier for the above receiver. List \$17.50. YOUR PRICE

\$10²⁹

No. A4235 Television Tube. List \$7.50. YOUR PRICE

\$4⁴¹

No. A8247 Complete Television Kit. List \$100.00. YOUR PRICE

\$58⁵⁰

TELEVISION AMPLIFIER



A four stage Television Amplifier complete with all resistors and coupling condensers. Wired, so that two power tubes may be used in parallel. Any power tube will serve. Recommended tubes are 6V6, 171, or 210. Price without tubes.

A4234 List \$17.50. YOUR PRICE

\$10²⁹

I. C. A. TELEVISION MOTORS UNIVERSAL

New smooth running non-sparking Universal motor offering accurate synchronization of the receiving scanning disc and broadcasting scanning disc. A.C. or D.C. operation. 1/4-in. shaft.

No. A4238 List \$29.50. YOUR PRICE

\$17³⁴

SYNCHRONOUS MOTOR

Designed especially for Television Receivers, where broadcasting apparatus and receiving set are operated on the power supplied by the same company. The Synchronous Motor will eliminate the necessity of using a speed control on the receiver for synchronization. For 110, 50-60 cycle.

No. A4239 List \$39.50. YOUR PRICE

\$23²²

No. A4240 Chuck to fit 1/4 in. Motor Shaft. List \$5.00. NET

\$2.94

VISION TELESCOPE LENS

Accurately made of special magnifying and ground glass. Encased in telescope with six inch magnifiers.

No. A4241 List \$10.00. YOUR PRICE

\$5⁸⁸

JENKINS TELEVISOR ESSENTIAL KIT

The Jenkins Home Radio Visor Kit is offered to those who enjoy building their own Television Receivers at a reasonable expenditure. Experience the new thrill of pictures by radio and keep in close touch with the growth of this new gigantic form of entertainment.

Easy to Construct

All parts are drilled, making the actual work purely a matter of simple assembly and wiring. Parts comprise front bracket with ball bearing shaft for scanning disc; rotor guard and mounting screws, lamp, ground components, socket clips, conductors, scanning disc and tooth rotor condenser, rheostats, and platform components of wood and bakelite. For 110 volt 60 cycle.

No. A8290 Jenkins Televisor Kit ready to assemble, less lens assembly and television lamp, but with 48 hole scanning disc. List \$42.50. YOUR PRICE

\$27⁰⁷

Speed Control

For synchronization of picture and signals.

No. A4236 List \$3.00. YOUR PRICE

\$1⁸⁹

JENKINS LENS ASSEMBLY

Magnifying Lens and holder serving to magnify the radio vision images instead of viewing them in their original small dimensions. Provided with complete instructions to simplify assembly.

No. A4550 List \$5.00. YOUR PRICE

\$3¹⁸

JENKINS SCANNING DISCS

Jenkins Standard Television Scanning Discs.

No. A8291 24 Hole Disc.
No. A8292 48 Hole Disc.
No. A8293 60 Hole Disc.

List, Each, \$15.00. YOUR PRICE

\$8⁶²

JENKINS TELEVISION LAMP

Television tube required for operation of television receiver. Recommended in conjunction with the Televisor Kit mentioned above. Standard UX Base.

No. A4551 List \$7.50. YOUR PRICE

\$4⁷⁷

JENKINS AUTOMATIC SYNCHRONIZER

The new automatic Jenkins Synchronizer which takes guesswork out of television synchronization. This instrument is to be used with a separate power pack and will permit automatic synchronization with the indicating radio-vision signal. The device fits on an accurately machined arbor on the front of the Jenkins Televisor.

No. A8294 List \$25.00. YOUR PRICE

\$15⁹³

Special Photo Cell Booklet

Jenkins photo-cell booklet offers complete details explaining the functions and advantages of the new Photo-Electric Cells in television, industry and sound film.

No. A4552 YOUR PRICE

25^c

TELEVISION TUBE and PHOTO ELECTRIC CELL

The Television tube characteristics: Striking voltage 100; minimum current 5 mils; maximum 80 mils; Internal resistance 1,000 ohms with plate area 1 1/2 in. square.

No. A4235 List \$10.00. YOUR PRICE

\$5⁸⁸

Photo Electric cell intended not only for television experimentation, but with talking movies, control devices, relays, etc. 1 1/4 in. bulb diam.

No. A4237 List \$20.00. YOUR PRICE

\$11⁷⁶

SCANNING DISCS

The new I.C.A. Aluminum Scanning Disc constructed with utmost precision, assuring a hole layout mathematically correct for the present standard television pictures of 1 1/2 by 1 1/2 in.

No. A8243 24 Line Disc.

No. A8245 48 Line Disc.

List, Each, \$10.00. YOUR PRICE

\$5⁸⁸

RAYTHEON KINO LAMP

Neon type tube intended especially for television receivers. Has a plate 1 1/2 in. square with a glow area of 2 1/4 square inches. Uniform glow. Starting voltage 220 to 235 volts.

No. A686 List \$7.50. YOUR PRICE

\$4⁴¹

HYLON RADIO TUBES

Y-224A
SCREEN GRID
AMPLIFIER
No. E235.
List, \$1.65.
YOUR
PRICE..... **49c**

Y-227
DET. AMP.
No. E213.
List, \$1.05.
YOUR
PRICE..... **31c**

X-226
AMPLIFIER
No. E216.
List, \$0.85.
YOUR
PRICE..... **25c**

X-280
FULL WAVE
RECTIFIER
No. E217.
List, \$1.05.
YOUR
PRICE..... **31c**

X-201A
DET.-AMP.
No. E208.
List, \$0.80.
YOUR
PRICE..... **24c**

X-200A
DETECTOR
No. E207.
List, \$4.00.
YOUR
PRICE..... **\$1.18**

X-112A
POWER AMP.
No. E203.
List, \$1.55.
YOUR
PRICE..... **46c**

V-199
Detector Amplifier
for dry cell.
No. E205.
List, \$2.75.
YOUR
PRICE..... **81c**

X-120
DRY CELL AMP.
No. E226.
List, \$3.00.
YOUR
PRICE..... **88c**

X-210
Power Amplifier.
No. E209.
List, \$7.25.
YOUR
PRICE..... **\$2.14**

X-250
AMPLIFIER
No. E216.
List, \$6.20.
YOUR
PRICE..... **\$1.82**

X-281
Half-Wave Rect.
No. E218.
List, \$5.20.
YOUR
PRICE..... **\$1.53**

X-240
Hi-Mu Voltage
Amplifier.
No. E214.
List, \$3.00.
YOUR
PRICE..... **88c**

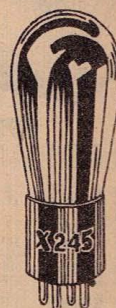
X-12
DET.-AMP.
For dry cell.
No. E202.
List, \$1.55.
NET..... **46c**

SENSATIONAL LOW PRICES

Hylon tubes represent quality at a rare low price. They are built to rigid modern requirements, under the latest methods of economical manufacture. The extremely low price is no measure of the unusually fine service given by these tubes. Will adequately fill the requirements of set owners, dealers, and service men with splendid results in performance and in savings and profits.

TYPE X-245 POWER AMPLIFIER

Power output tube for last audio stage. 1.6 watts output at plate voltage of 250.
No. E215.
List, \$1.15.
YOUR PRICE..... **34c**



**THE
QUALITY
TUBE**



ARCTURUS BLUE TUBES

Famous Quick Heaters

The famous Arcturus tube is noted for its quick action, its noiseless operation, and its ability to withstand current surges. Try the Arcturus in your receiver and enjoy clear, humless tone, increased volume, and exceptionally long life. This super-quality has established the wide reputation of Arcturus A.C. tubes.

No.	Type	Description	List	NET
E508	101A	Detector Amplifier	\$0.80	\$0.42
E509	110	Power Amplifier	.75	.38
E503	012A	Detector Amplifier	1.55	.82
E510	122	S.G. Amplifier	3.15	1.67
E535	124A	S.G. Detector Amplifier	1.65	.87
E512	126	Amplifier	.85	.45
E513	127	Detector Amplifier	1.05	.56
E525	130	Detector Amplifier	1.65	.87
E526	131	Power Amplifier	1.65	.87
E527	132	S.G. Detector Amplifier	2.35	1.25
E529	133	Power Pentode	2.80	1.48
E538	134	Var. Mu R.F. Pentode	2.80	1.48
E531	136A	S.G. Detector Amplifier	2.80	1.48
E532	137A	Detector Amplifier	1.80	.95
E533	138A	Power Pentode	2.80	1.48
E524	139A	Var. Mu R.F. Pentode	2.80	1.48
E539	44	Var. Mu R.F. Pentode	2.85	1.51
E515	145	Power Amplifier	1.15	.61
E519	46	Class "B" Amplifier	1.55	.82
E516	150	Power Amplifier	6.20	3.29
E537	551	Var. Mu R.F. Amplifier	1.65	.87
E522	55	Duplex-Diode Triode	1.60	.85
E523	56	Det. Amp. Oscil.	1.30	.69
E543	57	S.G. Detector Amplifier	1.65	.87
E544	58	Var. Mu R.F. Pentode	1.65	.87
E520	59	Gen. Pur. Power Amp.	2.20	1.17
E504	071A	Power Amplifier	.95	.50
E517	180	Full-Wave Rectifier	1.05	.56
E518	181	Half-Wave Rectifier	5.20	2.76
E545	82	F-W Mer. Vapor Rec.	1.30	.69
E546	83	F-W Mer. Vapor Rec.	1.55	.82
E547	85	Duplex-Diode Triode	1.60	.85
E548	89	Gen. Pur. Power Amp.	1.80	.95
E505	090UV	Detector Amplifier	2.80	1.48
E506	090UX	Detector Amplifier	2.55	1.35
E540	G.A.	Power Pentode	2.75	1.46
E534	P.Z.	Power Pentode	1.60	.85
E541	Wunderlich A	Detector	3.00	1.76
E542	Wunder. A	Automotive Detector	3.00	1.76

THE LATEST DEVELOPMENTS TELEVISION—SOUND MOVIE TUBES AND PHOTO-ELECTRIC CELLS

The latest scientific developments in tube manufacture in the famous Triad products. Triad tubes have established a world-wide reputation for excellence in performance and durability. Here are newly-designed tubes for the latest needs. Highest quality equipment for the experimenter and amateur broadcaster, for sound film work, public address systems, and television.

All tubes listed below are subjected to rigid tests before release and are in perfect condition when shipped. They are offered on a final sales basis, not subject to return.

CRATER NEON TYPE

New Triad product used in reproduction of television pictures, in conjunction with lense type Scanning Discs. Produces intense light source and can be applied for any type of optical system. Approx. striking voltage 180.0. Max. Current 40 M.A. Approx. Crater light source .030 in.

No. E449. YOUR PRICE..... **\$8.82**



T-TEL.

Triad television tube designed for use with usual scanner. Maximum brilliancy with low current consumption. 1½ in. plate; approx. striking voltage 190.0. Max. current 25 M.A.

No. E445. YOUR PRICE..... **\$5.51**

Photo-Electric Cells

No. E446	Type PEC-2	NET	\$13.28
No. E447	Type PEC-3	NET	17.64
No. E448	Type PEC-7	NET	13.28
No. E422	Type 868	NET	6.61

Sound-Movie Types

No. E400	Type 211	NET	\$15.75
No. E401	Type 845	NET	15.75
No. E450	Type 205D	NET	4.41

ARCTURUS PHOTOLYTIC CELL

Type P4A. Photolytic Cell for improved operation of every photo-electric device.

No. E536. List, \$31.50.
YOUR PRICE..... **\$15.75**