

Auction and Sales



































ZENITH 16 IN
B-W TV 1960S?
WORKS GOOD
\$35⁰⁰ OUT
THE DOOR





























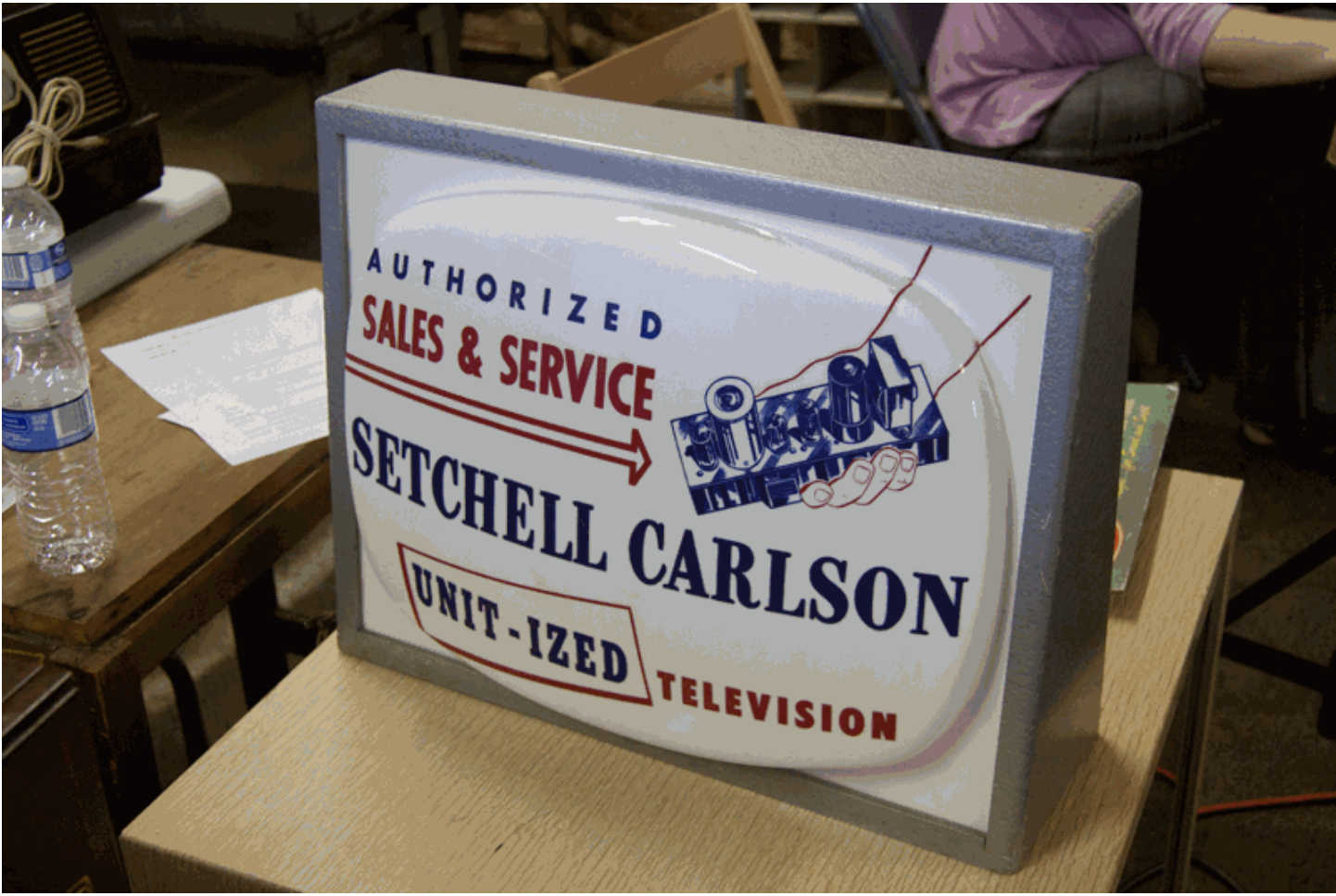
























































RENT COM, INC.
SCHILLER PARK, IL
847-678-7000

87 085 L







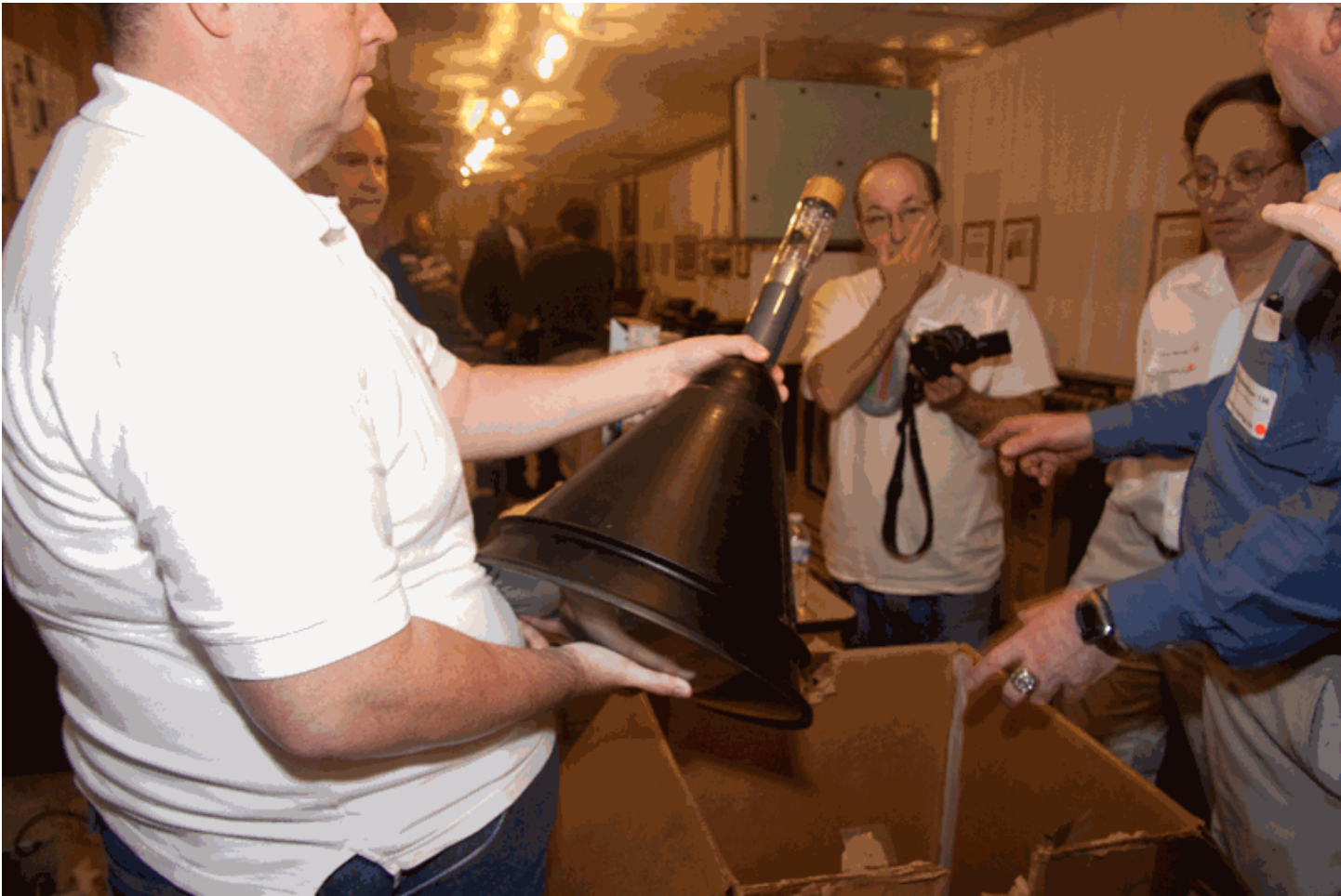


Early RCA Prototype Chassis and CRTs

















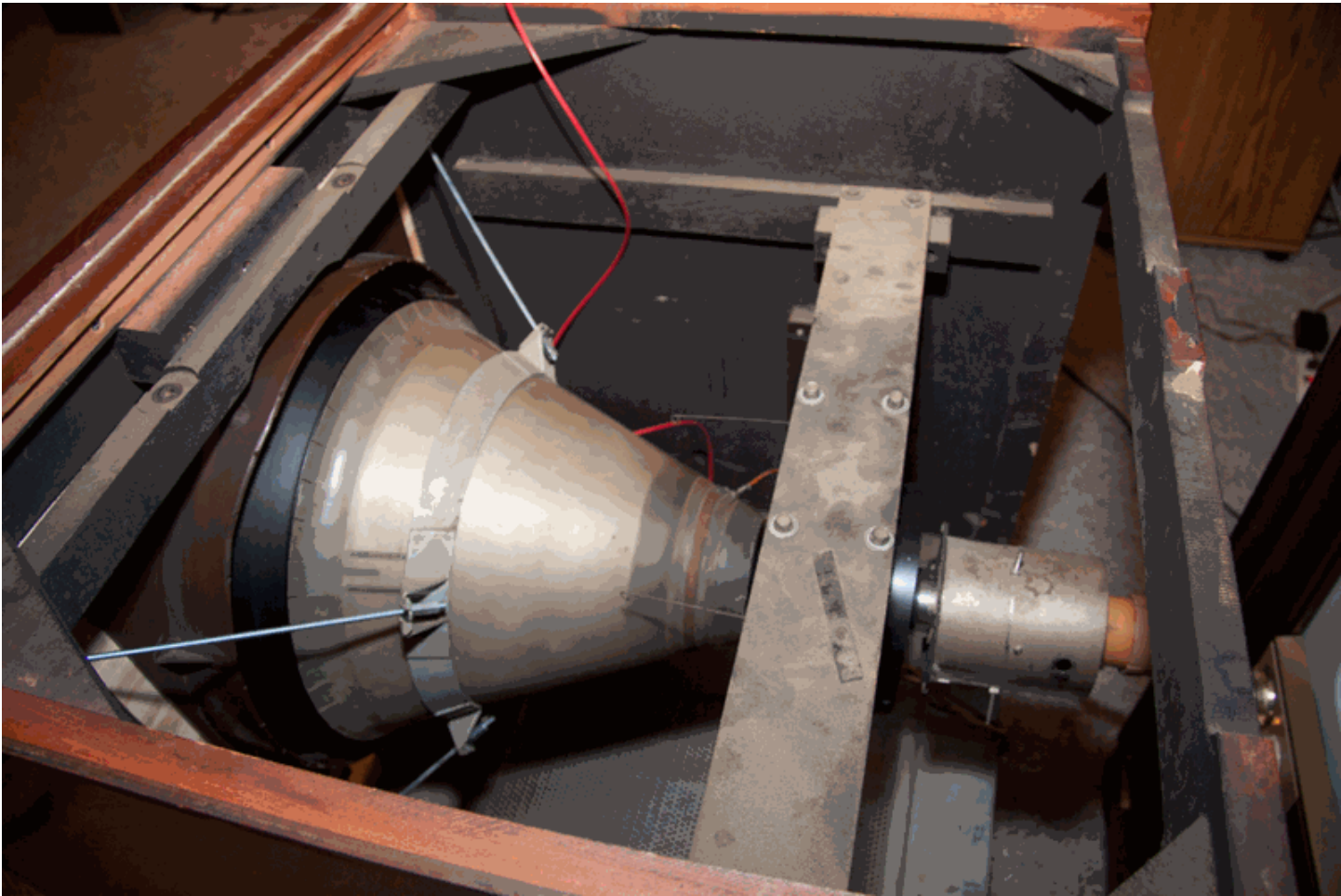














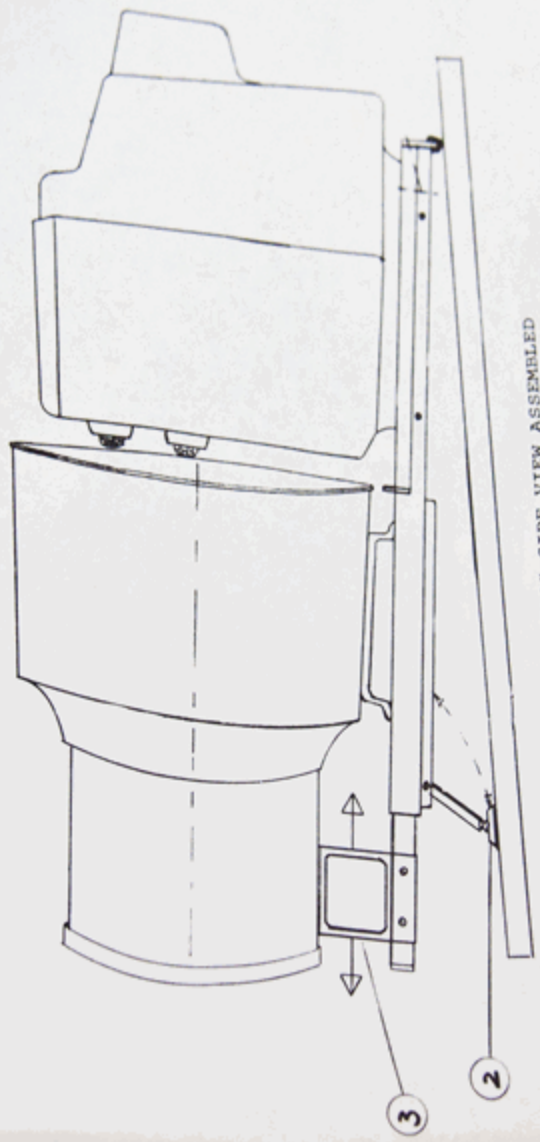




New at ETF Museum



KNOX "TELECASTER" ASSEMBLED
And Ready For Viewing. Lightweight
And Durable, The Knox System
May Be Enjoyed Almost Anywhere
In The Home.



KNOX "TELECASTER" SIDE VIEW ASSEMBLED

Patent Pending

6. Set up KNOX VIDEO screen directly in front of Telecaster:
5' Screen - approximately 6' to 7' from Telecaster.
6' Screen - approximately 7' to 8' from Telecaster.
7. The angle of the screen should be the same as the angle of the Telecaster. The screen may be tilted forward to permit this angle (see screen instructions).
8. Darken room and turn on T.V. set. Adjust Telecaster so that TV picture fills the screen.
9. Focus picture by grasping hand grip under lens and sliding lens back and forward rail (illustration 3). Should you move Telecaster closer or away from screen, you can simply re-focus for proper viewing.
10. When not viewing large screen television, the entire system may be easily stowed if preferred.
NOTE: The screen and the lens are washable. Use a mild detergent. The plastic lenses may also be cleaned with a soft brush.

KNOX WARRANTY

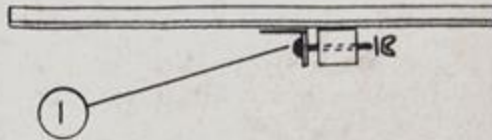
90 Day Warranty from date of purchase against defects in workmanship and materials under normal use. In the event a defect occurs during the warranty period, Knox will repair or replace, at its option, at no charge. Return of the product for such repair or replacement is the responsibility of the purchaser. This warranty gives you specific legal rights, and you may also have other rights which vary from state to state.

Knox Manufacturing Company
111 Spruce Street
Wood Dale, Ill. 60191

595

KNOX
"TELECASTER"
PROJECTION TV SYSTEM
OPERATING INSTRUCTIONS

1. Carefully unpack the lens system from the carton.
2. Assemble T.V. support tray to lens assembly bracket.
Use two wing nuts and screws provided. See illustration below.



3. Place Telecaster lens system on flat surface, table, floor, etc. (See illustration 2).
4. Pull tilt leg forward from frame and adjust swivel foot to desired height. Swivel foot turns in and from tilt leg. (Illustration 2).
5. Place TV set on tray and allow about 2" between back edge of light shield and TV picture tube. Center TV screen in center of lens shield.

NOTE: The Knox Telecaster will operate with Color and Black & White TV sets from 7" to 19" screen sizes.

Knox Telecaster

This device was made in the 60s or 70s to project the image from a 13 inch set onto a screen. Muntz made a projection TV set using the same principle. It used a Sony 13 inch set and a lens with screen and sold for \$900.

Thanks to Bob Dobush for finding it and bringing it to the museum.

Knox Telecaster

This device was made in the 60s or 70s to project the image from a 13 inch set onto a screen. Muntz made a projection TV set using the same principle. It used a Sony 13 inch set and a lens with screen and sold for \$900.

Thanks to Bob Dobush for finding it and bringing it to the museum.





Baird/Rauland Projection CRT

Used in Baird theater television system. This tube was made by Baird in 1939, then sold to Rauland in 1942 as part of Rauland's purchase of Baird's theater television business in the United States.

The projector used a 60-80KV supply and a 15 x 20 foot screen.

Gaylord CRT
The CRT was made in 1942



Baird/Rauland Projection CRT

Used in Baird theater television system. This tube was made by Baird in 1939, then sold to Rauland in 1942 as part of Rauland's purchase of Baird's theater television business in the United States.

The projector used a 60-80KV supply and a 15 x 20 foot



Baird/Rauland Projection CRT

Used in Baird theater television system. This tube was made by Baird in 1939, then sold to Rauland in 1942 as part of Rauland's purchase of Baird's theater television business in the United States.

The projector used a 60-80KV supply and a 15 x 20 foot screen.



**Ardenne
1931 CRT**

This tube was used in
Ardenne's Flying Spot
Scanner and receivers
in his 1931 experi-

Presentations







Developmental RCA Color Television Receivers

- RCA Developmental Receivers originate from:
 - RCA Laboratories at Princeton, NJ
 - 30 known models
 - RCA Industry Service Laboratory
 - 1 known receiver
- RCA Developmental Receivers are:
 - RCA Industry Service Laboratory
 - New York
 - Operational Monitors
 - Products Development Group
 - 30 known models

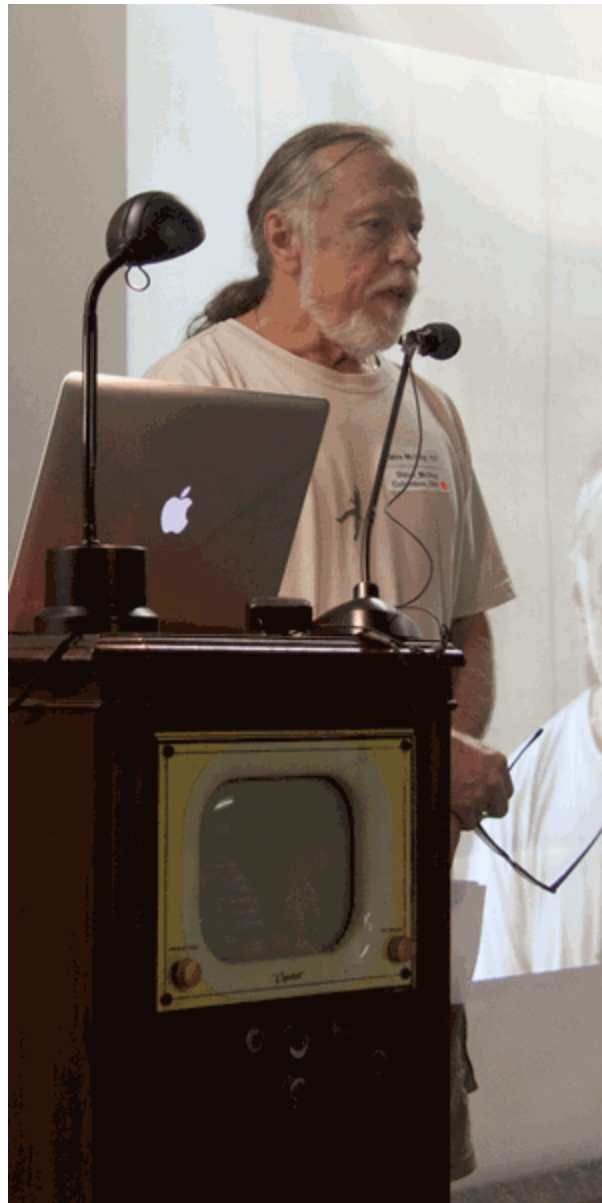












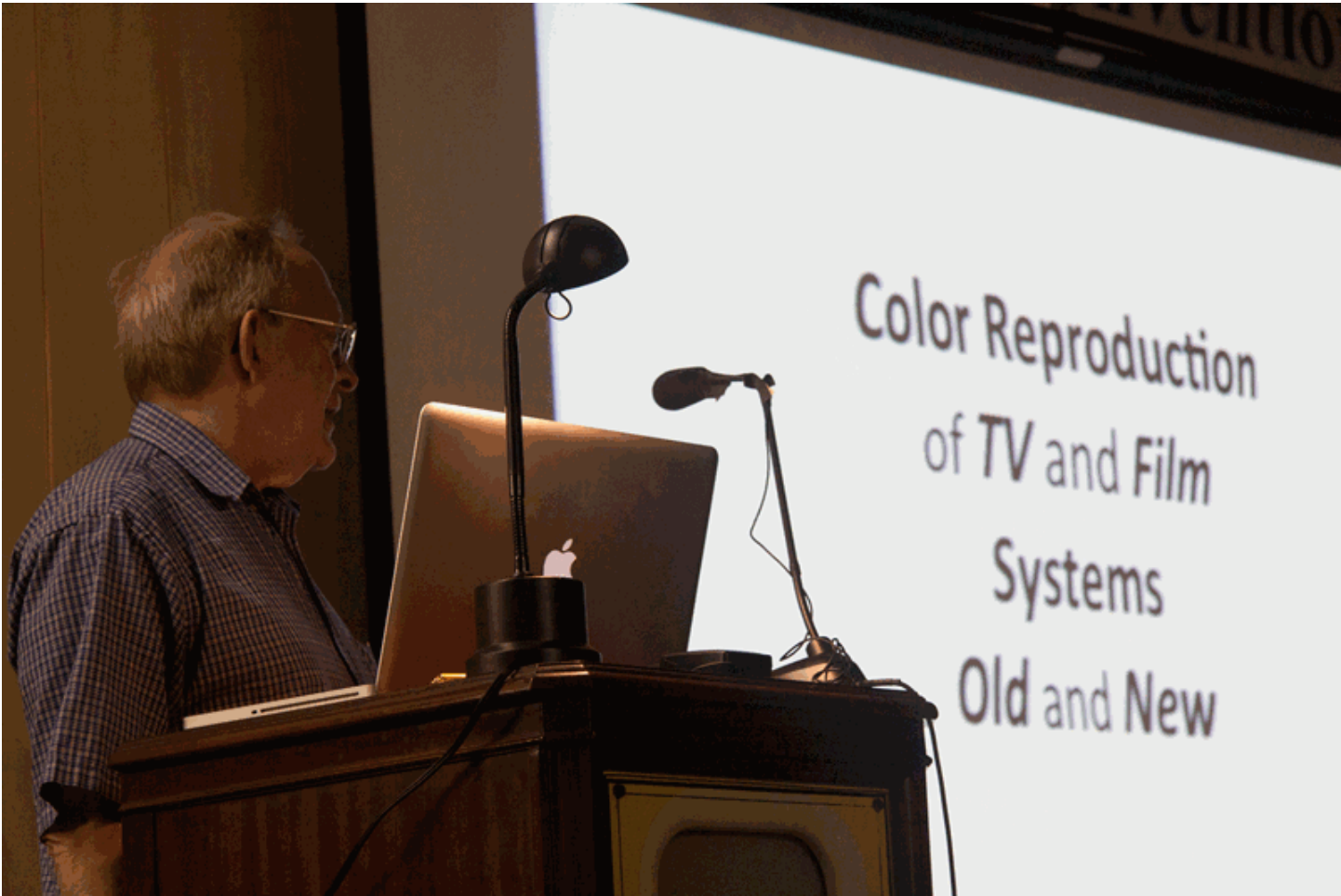












Color Reproduction
of TV and Film
Systems
Old and New



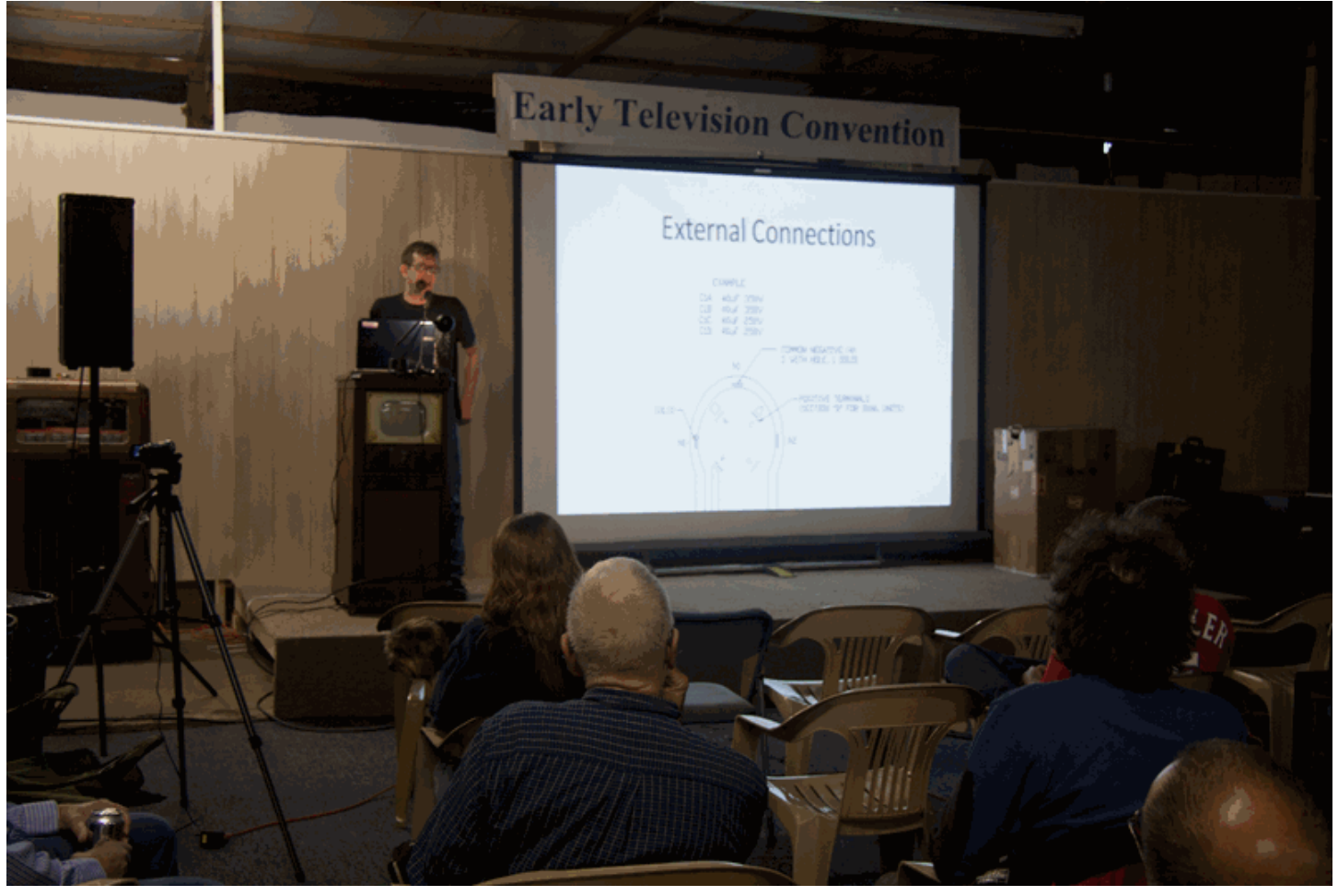
Seminars



Early Television Convention

External Connections

- COMPLC
- 12A 40V 20W
- 12B 40V 20W
- 12C 40V 20W
- 12D 40V 20W









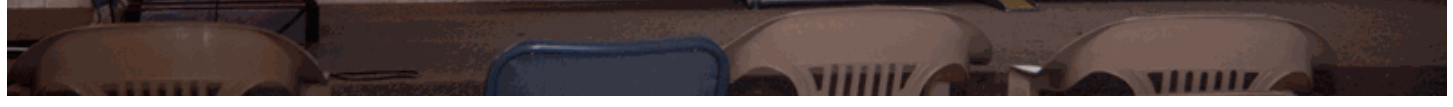


Bletchley Park Tour

For
Amateur Radio Research and Development
www.amrad.org

14 April 2011

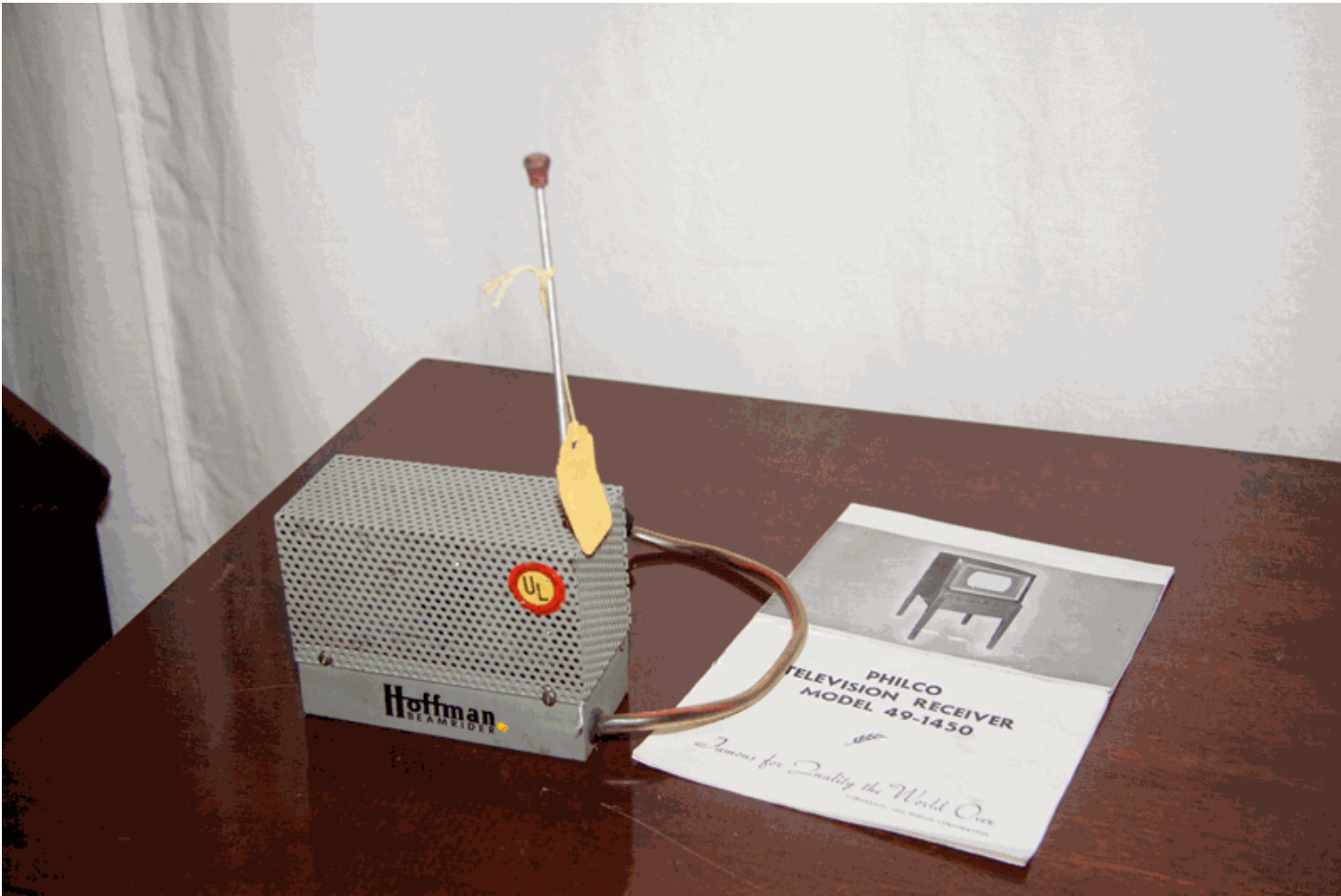
George Lemaster Ph.D.
WB5OYP



General







Filmstrip Viewer

This novelty item was probably designed to help sell Philco TV sets. Inside is a film strip with scenes from early television. It has a battery and bulb, with a knob to select which slide to watch.



Screen Size	12 inch
Tube Make	1943-48
Cabinet	Original Finish
Electronic Restoration	Not Restored

International Telemeter
Pay TV Converter

This converter box accepted coins. Scrambled video was sent, and when the proper amount of money was inserted, unscrambled picture and sound would appear. This one was used in Toronto in 1960.





Haytheon

INSTALLATION AND SERVICE INSTRUCTIONS

MODEL 500W ELECTRIC POWER AMPLIFIER

The Electric Power Amplifier is designed to be used only with the following Receiver-Cameras as shown in column opposite MODEL 500W on page 10 of this manual.

RECEIVER-CAMERAS:
 Model 500, 500A, 500B, 500C, 500D, 500E, 500F, 500G, 500H, 500I, 500J, 500K, 500L, 500M, 500N, 500O, 500P, 500Q, 500R, 500S, 500T, 500U, 500V, 500W, 500X, 500Y, 500Z, 500AA, 500AB, 500AC, 500AD, 500AE, 500AF, 500AG, 500AH, 500AI, 500AJ, 500AK, 500AL, 500AM, 500AN, 500AO, 500AP, 500AQ, 500AR, 500AS, 500AT, 500AU, 500AV, 500AW, 500AX, 500AY, 500AZ, 500BA, 500BB, 500BC, 500BD, 500BE, 500BF, 500BG, 500BH, 500BI, 500BJ, 500BK, 500BL, 500BM, 500BN, 500BO, 500BP, 500BQ, 500BR, 500BS, 500BT, 500BU, 500BV, 500BW, 500BX, 500BY, 500BZ, 500CA, 500CB, 500CC, 500CD, 500CE, 500CF, 500CG, 500CH, 500CI, 500CJ, 500CK, 500CL, 500CM, 500CN, 500CO, 500CP, 500CQ, 500CR, 500CS, 500CT, 500CU, 500CV, 500CW, 500CX, 500CY, 500CZ, 500DA, 500DB, 500DC, 500DD, 500DE, 500DF, 500DG, 500DH, 500DI, 500DJ, 500DK, 500DL, 500DM, 500DN, 500DO, 500DP, 500DQ, 500DR, 500DS, 500DT, 500DU, 500DV, 500DW, 500DX, 500DY, 500DZ, 500EA, 500EB, 500EC, 500ED, 500EE, 500EF, 500EG, 500EH, 500EI, 500EJ, 500EK, 500EL, 500EM, 500EN, 500EO, 500EP, 500EQ, 500ER, 500ES, 500ET, 500EU, 500EV, 500EW, 500EX, 500EY, 500EZ, 500FA, 500FB, 500FC, 500FD, 500FE, 500FF, 500FG, 500FH, 500FI, 500FJ, 500FK, 500FL, 500FM, 500FN, 500FO, 500FP, 500FQ, 500FR, 500FS, 500FT, 500FU, 500FV, 500FW, 500FX, 500FY, 500FZ, 500GA, 500GB, 500GC, 500GD, 500GE, 500GF, 500GG, 500GH, 500GI, 500GJ, 500GK, 500GL, 500GM, 500GN, 500GO, 500GP, 500GQ, 500GR, 500GS, 500GT, 500GU, 500GV, 500GW, 500GX, 500GY, 500GZ, 500HA, 500HB, 500HC, 500HD, 500HE, 500HF, 500HG, 500HH, 500HI, 500HJ, 500HK, 500HL, 500HM, 500HN, 500HO, 500HP, 500HQ, 500HR, 500HS, 500HT, 500HU, 500HV, 500HW, 500HX, 500HY, 500HZ, 500IA, 500IB, 500IC, 500ID, 500IE, 500IF, 500IG, 500IH, 500II, 500IJ, 500IK, 500IL, 500IM, 500IN, 500IO, 500IP, 500IQ, 500IR, 500IS, 500IT, 500IU, 500IV, 500IW, 500IX, 500IY, 500IZ, 500JA, 500JB, 500JC, 500JD, 500JE, 500JF, 500JG, 500JH, 500JI, 500JJ, 500JK, 500JL, 500JM, 500JN, 500JO, 500JP, 500JQ, 500JR, 500JS, 500JT, 500JU, 500JV, 500JW, 500JX, 500JY, 500JZ, 500KA, 500KB, 500KC, 500KD, 500KE, 500KF, 500KG, 500KH, 500KI, 500KJ, 500KL, 500KM, 500KN, 500KO, 500KP, 500KQ, 500KR, 500KS, 500KT, 500KU, 500KV, 500KW, 500KX, 500KY, 500KZ, 500LA, 500LB, 500LC, 500LD, 500LE, 500LF, 500LG, 500LH, 500LI, 500LJ, 500LK, 500LL, 500LM, 500LN, 500LO, 500LP, 500LQ, 500LR, 500LS, 500LT, 500LU, 500LV, 500LW, 500LX, 500LY, 500LZ, 500MA, 500MB, 500MC, 500MD, 500ME, 500MF, 500MG, 500MH, 500MI, 500MJ, 500MK, 500ML, 500MM, 500MN, 500MO, 500MP, 500MQ, 500MR, 500MS, 500MT, 500MU, 500MV, 500MW, 500MX, 500MY, 500MZ, 500NA, 500NB, 500NC, 500ND, 500NE, 500NF, 500NG, 500NH, 500NI, 500NJ, 500NK, 500NL, 500NM, 500NN, 500NO, 500NP, 500NQ, 500NR, 500NS, 500NT, 500NU, 500NV, 500NW, 500NX, 500NY, 500NZ, 500OA, 500OB, 500OC, 500OD, 500OE, 500OF, 500OG, 500OH, 500OI, 500OJ, 500OK, 500OL, 500OM, 500ON, 500OO, 500OP, 500OQ, 500OR, 500OS, 500OT, 500OU, 500OV, 500OW, 500OX, 500OY, 500OZ, 500PA, 500PB, 500PC, 500PD, 500PE, 500PF, 500PG, 500PH, 500PI, 500PJ, 500PK, 500PL, 500PM, 500PN, 500PO, 500PP, 500PQ, 500PR, 500PS, 500PT, 500PU, 500PV, 500PW, 500PX, 500PY, 500PZ, 500QA, 500QB, 500QC, 500QD, 500QE, 500QF, 500QG, 500QH, 500QI, 500QJ, 500QK, 500QL, 500QM, 500QN, 500QO, 500QP, 500QQ, 500QR, 500QS, 500QT, 500QU, 500QV, 500QW, 500QX, 500QY, 500QZ, 500RA, 500RB, 500RC, 500RD, 500RE, 500RF, 500RG, 500RH, 500RI, 500RJ, 500RK, 500RL, 500RM, 500RN, 500RO, 500RP, 500RQ, 500RR, 500RS, 500RT, 500RU, 500RV, 500RW, 500RX, 500RY, 500RZ, 500SA, 500SB, 500SC, 500SD, 500SE, 500SF, 500SG, 500SH, 500SI, 500SJ, 500SK, 500SL, 500SM, 500SN, 500SO, 500SP, 500SQ, 500SR, 500SS, 500ST, 500SU, 500SV, 500SW, 500SX, 500SY, 500SZ, 500TA, 500TB, 500TC, 500TD, 500TE, 500TF, 500TG, 500TH, 500TI, 500TJ, 500TK, 500TL, 500TM, 500TN, 500TO, 500TP, 500TQ, 500TR, 500TS, 500TT, 500TU, 500TV, 500TW, 500TX, 500TY, 500TZ, 500UA, 500UB, 500UC, 500UD, 500UE, 500UF, 500UG, 500UH, 500UI, 500UJ, 500UK, 500UL, 500UM, 500UN, 500UO, 500UP, 500UQ, 500UR, 500US, 500UT, 500UU, 500UV, 500UW, 500UX, 500UY, 500UZ, 500VA, 500VB, 500VC, 500VD, 500VE, 500VF, 500VG, 500VH, 500VI, 500VJ, 500VK, 500VL, 500VM, 500VN, 500VO, 500VP, 500VQ, 500VR, 500VS, 500VT, 500VU, 500VV, 500VW, 500VX, 500VY, 500VZ, 500WA, 500WB, 500WC, 500WD, 500WE, 500WF, 500WG, 500WH, 500WI, 500WJ, 500WK, 500WL, 500WM, 500WN, 500WO, 500WP, 500WQ, 500WR, 500WS, 500WT, 500WU, 500WV, 500WW, 500WX, 500WY, 500WZ, 500XA, 500XB, 500XC, 500XD, 500XE, 500XF, 500XG, 500XH, 500XI, 500XJ, 500XK, 500XL, 500XM, 500XN, 500XO, 500XP, 500XQ, 500XR, 500XS, 500XT, 500XU, 500XV, 500XW, 500XX, 500XY, 500XZ, 500YA, 500YB, 500YC, 500YD, 500YE, 500YF, 500YG, 500YH, 500YI, 500YJ, 500YK, 500YL, 500YM, 500YN, 500YO, 500YP, 500YQ, 500YR, 500YS, 500YT, 500YU, 500YV, 500YW, 500YX, 500YY, 500YZ, 500ZA, 500ZB, 500ZC, 500ZD, 500ZE, 500ZF, 500ZG, 500ZH, 500ZI, 500ZJ, 500ZK, 500ZL, 500ZM, 500ZN, 500ZO, 500ZP, 500ZQ, 500ZR, 500ZS, 500ZT, 500ZU, 500ZV, 500ZW, 500ZX, 500ZY, 500ZZ.

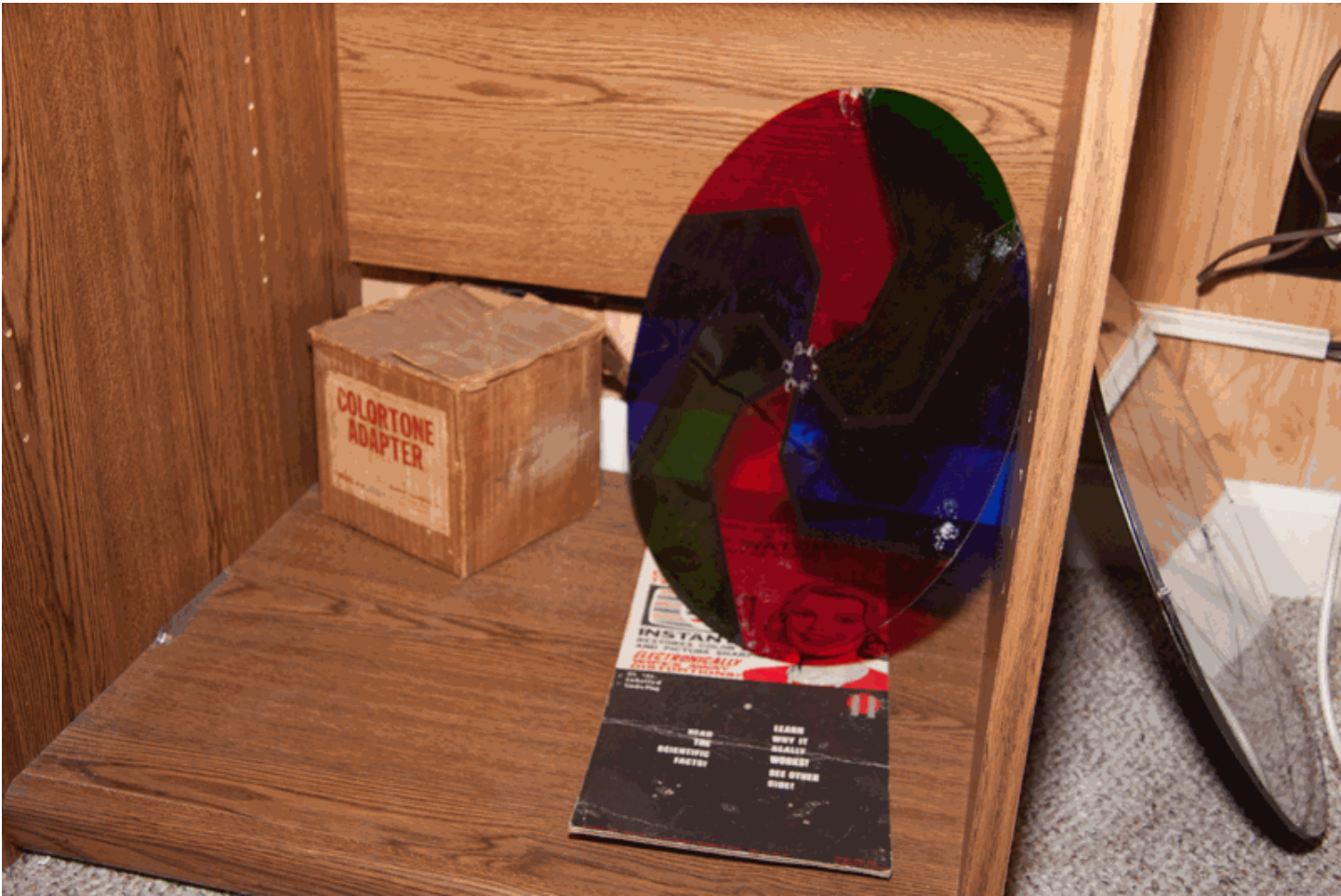
The unit is a complete assembly with an antenna or microphone to be used in its operation and ready to be installed. Simply follow the procedure given below.

Procedure:

1. Remove the top cover of the unit by unscrewing the four screws on the top cover.
2. Connect the antenna or microphone to the unit as shown in the diagram.
3. Connect the power source to the unit as shown in the diagram.
4. Connect the receiver-camera to the unit as shown in the diagram.
5. Turn on the power and adjust the volume control to the desired level.
6. Turn on the receiver-camera and adjust the tuning control to the desired frequency.
7. The unit is now ready for use.

Notes:

- 1. The unit should be used in a well-ventilated area.
- 2. Do not touch the antenna or microphone when the unit is operating.
- 3. Do not touch the power source when the unit is operating.
- 4. Do not touch the receiver-camera when the unit is operating.
- 5. Do not touch the volume control or tuning control when the unit is operating.
- 6. Do not touch the top cover when the unit is operating.
- 7. Do not touch the bottom cover when the unit is operating.
- 8. Do not touch the sides of the unit when the unit is operating.
- 9. Do not touch the front of the unit when the unit is operating.
- 10. Do not touch the back of the unit when the unit is operating.
- 11. Do not touch the top of the unit when the unit is operating.
- 12. Do not touch the bottom of the unit when the unit is operating.
- 13. Do not touch the sides of the unit when the unit is operating.
- 14. Do not touch the front of the unit when the unit is operating.
- 15. Do not touch the back of the unit when the unit is operating.





Colortone Adapter

This adapter was made in 1950 to allow black and white sets to receive CBS field sequential color broadcasts in black and white. It attached to the horizontal and vertical oscillator circuits in the set to change them to the scan rates for the CBS standard.



THIS IS THE INDIAN HEAD
IMAGE ETCHED ON A PLATE
FROM THE MONOSCOPE TUBE
IN THE RCA TK-1 GENERATOR
(NOT FOR SALE)

YOU MAY HOLD IT, DO NOT TAKE IT















Early Television Convention













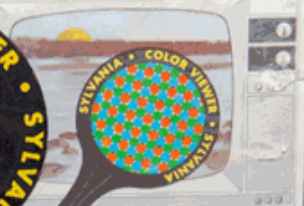








SYLVANIA



“COLOR VIEWER”

- Eliminates disabling the gun
- Separates color fields
- Magnifies individual colors

















1964 SONY CV-2000
Videorecorder
The first home
video recorder
built in the US
Designed by
Richard Davis

AT&T
Picturaphone

1962 Model 2. On
loan to the museum
from Richard Davis

1964 SONY CV-2000
Videorecorder
www.wiki.com/2000

1960 AT & T
MOD II PICTURAPHONE
www.wiki.com/2000

Come in
for a
StudioVis
Hydro-Screen
Cleaner by
StudioVis











