

DUMONT

First with the Finest in Television

MAIN CHASSIS SCHEMATIC DIAGRAM

for
TELESET MODELS

RA-105B

SUSSEX

RA-108A

BRADFORD
MANSFIELD

ALLEN B. DU MONT LABORATORIES, INC.
TELESET SERVICE CONTROL DEPT.
MARKET STREET, EAST PATERSON, NEW JERSEY

NOT TO BE REPRODUCED WITHOUT THE CON-
SENT OF ALLEN B. DU MONT LABORATORIES, INC.

RF ASSEMBLY
Bottom Coupled Inputer Parts List
RA-105B and RA-108A

Date of Issue 7/23/49

Symbol No.	Part No.	Description	Quantity
		Inputer and Dial Assembly	89002302
		Dial Mechanism	45000964
		RF Assembly	89001502
C101	03016550	Cap V P .5/5 mmf 500V	
C102	03016700	Cap F Ce 100 mmf 500V	
C103	03016450	Cap F Ce 470 min 500V	
	03014600		
C104	Same as C101		
C105	Same as C102		
C106	Same as C102		
C107	03016770	Cap F Ce .01 min 500V	
	03016750		
C108	03016660	Cap F M 130 mmf 5%	
C109	Same as C102		
C110	03018070	Cap F Ce 30 mmf 5%	
C111	03018870	Cap F Ce 1.5/7 N300	
C112	03012150	Cap F Ce 1 mmf 500V	
C113	03015470	Cap F Ce 470 min 350V	
	03014590		
C114	Same as C113		
C115	Same as C113		
C116	03016860	Cap F Ce 5 mmf N150	
C117	Same as C113		
C118	Same as C113		
C119	Same as C103		
C121	03014580	Cap F Ce 15 mmf 5%	
L106	21004571	Coil antenna	
L109	Same as L105		
L110	21004601	Inductor bandwidth	
*L201	21004931	Inductor end plate	
*L202	21004921	Inductor 10 turn	
*L203	21004941	Coil shunt	
*L204	21004991	Inductor end osc	
*L206	21004951	Inductor ground strap	
*L207	21004921	Inductor end grid	
*L208	21004941	Coil bandpass coupl	
R101	02037890	Res F 10K 2W 10%	
R102	02030240	Res F 100 1/2W 5%	
R103	02031890	Res F 10K 1/2W 10%	
R104	02041890	Res F 12K 1/2W 10%	
	02041900		
R105	02032130	Res 1 meg 1/2W 10%	
	02042130		
R106	02032010	Res F 100K 1/2W 10%	
	02042010		
R107	02032030	Res F 150K 1/2W 10%	
	02042030		
R108	Same as R101		
R109	02031880	Res F 8.2K 1/2W 10%	
	02041880		
V101	25000150	Tube 6J6	
V102	25000180	Tube 6AK5	
V103	25001760	Tube 6AB4	
X101	34002210	Socket Black Phenolic	
X102	Same as X101		
X103	34002050	Socket Ceramic	
	35000121	Strap Connector	
	41000390	Insulator Standoff	
	42001230	Base Tube Shield	
	43001240	Shield Tube	
	42001250	Shield Tube	

* Not used in early Bradford models.

PARTS USED IN EARLY BRADFORD MODELS
WHICH DIFFER FROM ABOVE LIST

Symbol No.	Part No.	Description	Quantity
R111	02030310	Res F 200 1/2W 5%	
L101	21004641	Inductor end plate	
L102	21004651	Inductor in Use	
L103	21004691	Coil shunt	
L104	21004651	Inductor end osc	
L107	21004631	Inductor end grid	
L108	21004691	Coil by-pass coupl	
Inputer	81000601	Inputer and Dial Assembly	81000601
RF Assembly	89001501		89001501
Dial Mechanism	45000961		45000961

Inputer 81000601 can be distinguished from Inputer 89002302 by entry of the antenna into rear of chassis.

Abbreviations used:
 C Composition Capacitor
 Cap Ceramic
 Ce Electrolytic
 W Wire Wound
 E Electrolytic
 F Fixed
 P Paper
 R Resistor

Unless otherwise stated, the tolerance shown is plus and minus of the indicated value. Where two or more part numbers are shown, the second and third numbers, if any, are alternate parts.

Symbol No.	Part No.	Description
C201	03014880	Cap Ce 100 mmf 500V
C202	03015110	Cap Ce 5000 mmf 500V
C203	Same as C202	
C204	Same as C202	
C205	Same as C201	
C206	Same as C202	
C207	Same as C202	
C208	03012500	Cap Ce 20 mmf 5% 500V
	03012220	
	03015750	
C209	03015260	Cap Ce 10 mmf 500V
C210	Same as C202	
C211	Same as C202	
C212	Same as C202	
C213	03015880	Cap coupling
C214	03015880	Cap E 10/10/10 mf
C215	03013800	Cap Ce 10 mmf ± 1 mmf 500V
	03012350	
C216	03012780	Cap Ce 47 mmf 10% 500V
	03015390	
C217	03014040	Cap Pa .1 mf 25% 400V
C220	Same as C214	
C221	03015890	Cap Pa .1 mf 25% 600V
C222	03009090	Cap Pa .05 mf. 25% 200V
C223	03014880	Cap Pa .5 mf 25% 400V
C224	03014880	Cap Pa .01 mf 25% 600V
C225	03015260	Cap Pa .01 mf 25% 400V
C226	Same as C222	
C227	03014450	Cap Ce 5 mmf ± .5 mmf
C228	03014010	Cap Ce 5 mmf ± .5 mmf
C229	Same as C202	
C230	Same as C202	
C231	03002720	Cap Ce 2.5 mmf ± .5 mmf
C232	03013900	Cap M 4700 mmf 20% 500V
C233	03023060	
C236	Same as C202	
C237	Same as C202	
C238	Same as C235	
C239	Same as C235	
C240	Same as C236	
C241	Same as C202	
C242	Same as C222	
C243	Same as C202	
C244	Same as C215	
C245	Same as C236	
C246	Same as C202	
C247	Same as C222	
C248	Same as C216	
C249	Same as C216	
C250	03014420	Cap Ce 470 mmf 10% 500V
	03012520	
C251	03001460	Cap Pa .02 mf 25% 400V
C252	Same as C227	
C253	03015920	Cap Ce .01 mf min 400V
C254	Same as C202	
C255	Same as C227	
C258	03014020	Cap Pa .05 mf. 25% 400V
C259	03020180	Cap M 330 mmf 10% 500V
C260	03001570	Cap Pa .005 mf 25% 600V
C263	Same as C227	
C265	03015590	Cap E 30/100/25 mf
C266	Same as C216	
C267	03033420	Cap M .01 mf 5% 300V
C268	Same as C260	
C269	Same as C260	
C270	03003400	Cap Pa .1 mf 10% 400V
C271	Same as C260	
C272	Same as C227	
C273	03015040	Cap Pa .02 mf 10% 400V
C275	Same as C270	
C276	Same as C217	
C278	03012550	Cap E 2000 mf 6V
C279	03015600	Cap Pa .05 mf 20% 600V
	03014180	
C280	Same as C279	
C281	03016820	Cap E 80 mf 350V
C282	03015820	
C284	Same as C260	
C285	03016170	Cap E 40/40/25 mf
C286	Same as C267	
C287	Same as C260	
C288	03013010	Cap Pa .1 mf 25% 200V
C290	Same as C222	
C294	03013070	Cap E 4 mf 150V
C295	03016910	Cap E 2000 mf 6V
C296	03017440	Cap E 3 mf 250V
C297	Same as C295	
C300	Same as C235	
C301	Same as C298	
C302	0301550 red dot.	03018060 yellow dot, 03018070 white dot
C303	Same as C227	
C304	03001160	Cap E 8 mf 450V
C305	Same as C270	
C306	Same as C304	
C307	Same as C270	
C308	Same as C216	
C309	03013940	Cap Ce .001 mf 350V
C310	Same as C309	
C311	Same as C309	
C312	03013540	Cap Ce 82 mmf 500V
C314	Same as C288	
C315	03017710	Cap V Ce .8/5 mmf
I201	12001310	Lamp Inc. .15 amp 6.3V
I202	Same as I201	
I203	Same as I201	
J201	09002760	Connector Female 1 contact
J202	09005481	Connector Assy Female 2 contacts
J203	Same as J201	
J204	40201831	Cable Assy yoke
J205	34001130	Socket tube 6 prong
J206	34001901	Socket Assy CRT
J207	34001911	Socket Assy Eye
J208	09005490	Connector Female 2 contacts
J209	09001030	Connector Female 1 contact
K201	05002410	Relay Armature SPST
	05003260	
L201	21004137	Coil Video IP
L202	21004144	Coil Video IP
L203	21004135	Coil Video IP
L204	21004138	Coil Video IP
L205	Same as L202	
L206	21004135	Coil Video IP
L207	Same as L204	
L208	Same as L206	
L209	21003971	Coil 21.9 mc
L210	Same as L209	
L211	Same as L201	
L212	Same as L206	
L214	21004467	Coil Video Peaking
L215	21004655	Coil Video Peaking
L216	21004121	Coil 4.5 mc trap
L218	21004653	Coil Video Peaking
L219	21004023	Choke Filter
L220	21004465	Coil Video Peaking
L221	Same as L209	
P201	40201811	Cable Assy 6 prong
P202	40201821	Cable Assy 8 prong
R203	02030700	Res F C 8.2K 5% 1/2W
	02040700	
R202	02030700	Res F C 47K 10% 1/2W
	02031370	
	02041970	
R203	02051970	Res F C 5.6K 5% 1/2W
	02030660	
	02040660	
R205	02050660	Res F C 68K 5% 1/2W
	02030970	
	02040920	
	02050920	
R206	Same as R206	Res F C 22K 10% 2W
R207	02031800	Res F C 10K 10% 1/2W
R208	02041890	Res F C 10K 10% 1/2W
	02051890	
	02030590	Res F C 3K 5% 1/2W
	02040590	
R210	02050590	Res F C 68 ohms 10% 1/2W
	02031630	
	02031630	
R211	Same as R206	
R212	Same as R206	
R213	02030760	Res F C 15K 5% 1/2W
	02040760	
	02050760	
R214	02031650	Res F C 100 ohms 10% 1/2W
	02051650	
R215	Same as R206	
R216	Same as R206	
R219	02030650	Res F C 5.1K 5% 1/2W
	02040650	
	02050650	

05B — RA-108A MAIN CHASSIS PARTS LIST

Date of Issue 7/10/49					
Symbol No.	Part No.	Description	Symbol No.	Part No.	Description
R210	Same as R210	Res F C 70K 5% 1W	R352	0203490	Res F C 30K 10% 1W
R222	0203399	Same as R210		0204486	0204486
R223	0203410	Res F C 1K 10% 1/2W		0204489	Same as R227
R224	0203170	Res F C 1K 10% 1/2W	R353	0203794	Res F C 27K 10% 2W
R225	0203170	Res F C 470K 10% 1/2W	R354	0203794	Same as R225
R226	0203200	Res V C 1000 ohms SPDT	R355	0203794	Same as R225
R227	0203486	Res F C 5.6K 10% 1W	R356	0203794	Same as R225
R228	0204486	Res F C 5.6K 10% 1W	R357	0203794	Same as R225
R229	0204486	Res F C 5.6K 10% 1W	R358	0203794	Same as R225
R230	0204486	Res F C 5.6K 10% 1W	R359	0203794	Same as R225
R231	0204486	Res F C 5.6K 10% 1W	R360	0203794	Same as R225
R232	0203785	Res F C 4.7K 10% 2W	R361	0203794	Same as R225
R233	0203200	Res F C 270K 10% 1/2W	R362	0203794	Same as R225
R234	0203200	Res F C 270K 10% 1/2W	R363	0203794	Same as R225
R235	0203200	Res F C 270K 10% 1/2W	R364	0203794	Same as R225
R236	0203200	Res F C 270K 10% 1/2W	R365	0203794	Same as R225
R237	0203200	Res F C 270K 10% 1/2W	R366	0203794	Same as R225
R238	0203200	Res F C 270K 10% 1/2W	R367	0203794	Same as R225
R239	0203200	Res F C 270K 10% 1/2W	R368	0203794	Same as R225
R240	0203200	Res F C 270K 10% 1/2W	R369	0203794	Same as R225
R241	0203200	Res F C 270K 10% 1/2W	R370	0203794	Same as R225
R242	0203200	Res F C 270K 10% 1/2W	R371	0203794	Same as R225
R243	0203200	Res F C 270K 10% 1/2W	R372	0203794	Same as R225
R244	0203200	Res F C 270K 10% 1/2W	R373	0203794	Same as R225
R245	0203200	Res F C 270K 10% 1/2W	R374	0203794	Same as R225
R246	0203200	Res F C 270K 10% 1/2W	R375	0203794	Same as R225
R247	0203200	Res F C 270K 10% 1/2W	R376	0203794	Same as R225
R248	0203200	Res F C 270K 10% 1/2W	R377	0203794	Same as R225
R249	0203200	Res F C 270K 10% 1/2W	R378	0203794	Same as R225
R250	0203200	Res F C 270K 10% 1/2W	R379	0203794	Same as R225
R251	0203200	Res F C 270K 10% 1/2W	R380	0203794	Same as R225
R252	0203200	Res F C 270K 10% 1/2W	R381	0203794	Same as R225
R253	0203200	Res F C 270K 10% 1/2W	R382	0203794	Same as R225
R254	0203200	Res F C 270K 10% 1/2W	R383	0203794	Same as R225
R255	0203200	Res F C 270K 10% 1/2W	R384	0203794	Same as R225
R256	0203200	Res F C 270K 10% 1/2W	R385	0203794	Same as R225
R257	0203200	Res F C 270K 10% 1/2W	R386	0203794	Same as R225
R258	0203200	Res F C 270K 10% 1/2W	R387	0203794	Same as R225
R259	0203200	Res F C 270K 10% 1/2W	R388	0203794	Same as R225
R260	0203200	Res F C 270K 10% 1/2W	R389	0203794	Same as R225
R261	0203200	Res F C 270K 10% 1/2W	R390	0203794	Same as R225
R262	0203200	Res F C 270K 10% 1/2W	R391	0203794	Same as R225
R263	0203200	Res F C 270K 10% 1/2W	R392	0203794	Same as R225
R264	0203200	Res F C 270K 10% 1/2W	R393	0203794	Same as R225
R265	0203200	Res F C 270K 10% 1/2W	R394	0203794	Same as R225
R266	0203200	Res F C 270K 10% 1/2W	R395	0203794	Same as R225
R267	0203200	Res F C 270K 10% 1/2W	R396	0203794	Same as R225
R268	0203200	Res F C 270K 10% 1/2W	R397	0203794	Same as R225
R269	0203200	Res F C 270K 10% 1/2W	R398	0203794	Same as R225
R270	0203200	Res F C 270K 10% 1/2W	R399	0203794	Same as R225
R271	0203200	Res F C 270K 10% 1/2W	R400	0203794	Same as R225
R272	0203200	Res F C 270K 10% 1/2W	R401	0203794	Same as R225
R273	0203200	Res F C 270K 10% 1/2W	R402	0203794	Same as R225
R274	0203200	Res F C 270K 10% 1/2W	R403	0203794	Same as R225
R275	0203200	Res F C 270K 10% 1/2W	R404	0203794	Same as R225
R276	0203200	Res F C 270K 10% 1/2W	R405	0203794	Same as R225
R277	0203200	Res F C 270K 10% 1/2W	R406	0203794	Same as R225
R278	0203200	Res F C 270K 10% 1/2W	R407	0203794	Same as R225
R279	0203200	Res F C 270K 10% 1/2W	R408	0203794	Same as R225
R280	0203200	Res F C 270K 10% 1/2W	R409	0203794	Same as R225
R281	0203200	Res F C 270K 10% 1/2W	R410	0203794	Same as R225
R282	0203200	Res F C 270K 10% 1/2W	R411	0203794	Same as R225
R283	0203200	Res F C 270K 10% 1/2W	R412	0203794	Same as R225
R284	0203200	Res F C 270K 10% 1/2W	R413	0203794	Same as R225
R285	0203200	Res F C 270K 10% 1/2W	R414	0203794	Same as R225
R286	0203200	Res F C 270K 10% 1/2W	R415	0203794	Same as R225
R287	0203200	Res F C 270K 10% 1/2W	R416	0203794	Same as R225
R288	0203200	Res F C 270K 10% 1/2W	R417	0203794	Same as R225
R289	0203200	Res F C 270K 10% 1/2W	R418	0203794	Same as R225
R290	0203200	Res F C 270K 10% 1/2W	R419	0203794	Same as R225
R291	0203200	Res F C 270K 10% 1/2W	R420	0203794	Same as R225
R292	0203200	Res F C 270K 10% 1/2W	R421	0203794	Same as R225
R293	0203200	Res F C 270K 10% 1/2W	R422	0203794	Same as R225
R294	0203200	Res F C 270K 10% 1/2W	R423	0203794	Same as R225
R295	0203200	Res F C 270K 10% 1/2W	R424	0203794	Same as R225
R296	0203200	Res F C 270K 10% 1/2W	R425	0203794	Same as R225
R297	0203200	Res F C 270K 10% 1/2W	R426	0203794	Same as R225
R298	0203200	Res F C 270K 10% 1/2W	R427	0203794	Same as R225
R299	0203200	Res F C 270K 10% 1/2W	R428	0203794	Same as R225
R300	0203200	Res F C 270K 10% 1/2W	R429	0203794	Same as R225
R301	0203200	Res F C 270K 10% 1/2W	R430	0203794	Same as R225
R302	0203200	Res F C 270K 10% 1/2W	R431	0203794	Same as R225
R303	0203200	Res F C 270K 10% 1/2W	R432	0203794	Same as R225
R304	0203200	Res F C 270K 10% 1/2W	R433	0203794	Same as R225
R305	0203200	Res F C 270K 10% 1/2W	R434	0203794	Same as R225
R306	0203200	Res F C 270K 10% 1/2W	R435	0203794	Same as R225
R307	0203200	Res F C 270K 10% 1/2W	R436	0203794	Same as R225
R308	0203200	Res F C 270K 10% 1/2W	R437	0203794	Same as R225
R309	0203200	Res F C 270K 10% 1/2W	R438	0203794	Same as R225
R310	0203200	Res F C 270K 10% 1/2W	R439	0203794	Same as R225
R311	0203200	Res F C 270K 10% 1/2W	R440	0203794	Same as R225
R312	0203200	Res F C 270K 10% 1/2W	R441	0203794	Same as R225
R313	0203200	Res F C 270K 10% 1/2W	R442	0203794	Same as R225
R314	0203200	Res F C 270K 10% 1/2W	R443	0203794	Same as R225
R315	0203200	Res F C 270K 10% 1/2W	R444	0203794	Same as R225
R316	0203200	Res F C 270K 10% 1/2W	R445	0203794	Same as R225
R317	0203200	Res F C 270K 10% 1/2W	R446	0203794	Same as R225
R318	0203200	Res F C 270K 10% 1/2W	R447	0203794	Same as R225
R319	0203200	Res F C 270K 10% 1/2W	R448	0203794	Same as R225
R320	0203200	Res F C 270K 10% 1/2W	R449	0203794	Same as R225
R321	0203200	Res F C 270K 10% 1/2W	R450	0203794	Same as R225
R322	0203200	Res F C 270K 10% 1/2W	R451	0203794	Same as R225
R323	0203200	Res F C 270K 10% 1/2W	R452	0203794	Same as R225
R324	0203200	Res F C 270K 10% 1/2W	R453	0203794	Same as R225
R325	0203200	Res F C 270K 10% 1/2W	R454	0203794	Same as R225
R326	0203200	Res F C 270K 10% 1/2W	R455	0203794	Same as R225
R327	0203200	Res F C 270K 10% 1/2W	R456	0203794	Same as R225
R328	0203200	Res F C 270K 10% 1/2W	R457	0203794	Same as R225
R329	0203200	Res F C 270K 10% 1/2W	R458	0203794	Same as R225
R330	0203200	Res F C 270K 10% 1/2W	R459	0203794	Same as R225
R331	0203200	Res F C 270K 10% 1/2W	R460	0203794	Same as R225
R332	0203200	Res F C 270K 10% 1/2W	R461	0203794	Same as R225
R333	0203200	Res F C 270K 10% 1/2W	R462	0203794	Same as R225
R334	0203200	Res F C 270K 10% 1/2W	R463	0203794	Same as R225
R335	0203200	Res F C 270K 10% 1/2W	R464	0203794	Same as R225
R336	0203200	Res F C 270K 10% 1/2W	R465	0203794	Same as R225
R337	0203200	Res F C 270K 10% 1/2W	R466	0203794	Same as R225
R338	0203200	Res F C 270K 10% 1/2W	R467	0203794	Same as R225
R339	0203200	Res F C 270K 10% 1/2W	R468	0203794	Same as R225
R340	0203200	Res F C 270K 10% 1/2W	R469	0203794	Same as R225
R341	0203200	Res F C 270K 10% 1/2W	R470	0203794	Same as R225
R342	0203200	Res F C 270K 10% 1/2W	R471	0203794	Same as R225
R343	0203200	Res F C 270K 10% 1/2W	R472	0203794	Same as R225
R344	0203200	Res F C 270K 10% 1/2W	R473	0203794	Same as R225
R345	0203200	Res F C 270K 10% 1/2W	R474	0203794	Same as R225
R346	0203200	Res F C 270K 10% 1/2W	R475	0203794	Same as R225
R347	0203200	Res F C 270K 10% 1/2W	R476	0203794	Same as R225
R348	0203200	Res F C 270K 10% 1/2W	R477	0203794	Same as R225
R349	0203200	Res F C 270K 10% 1/2W	R478	0203794	Same as R225
R350	0203200	Res F C 270K 10% 1/2W	R479	0203794	Same as R225
R351	0203200	Res F C 270K 10% 1/2W	R480	0203794	Same as R225

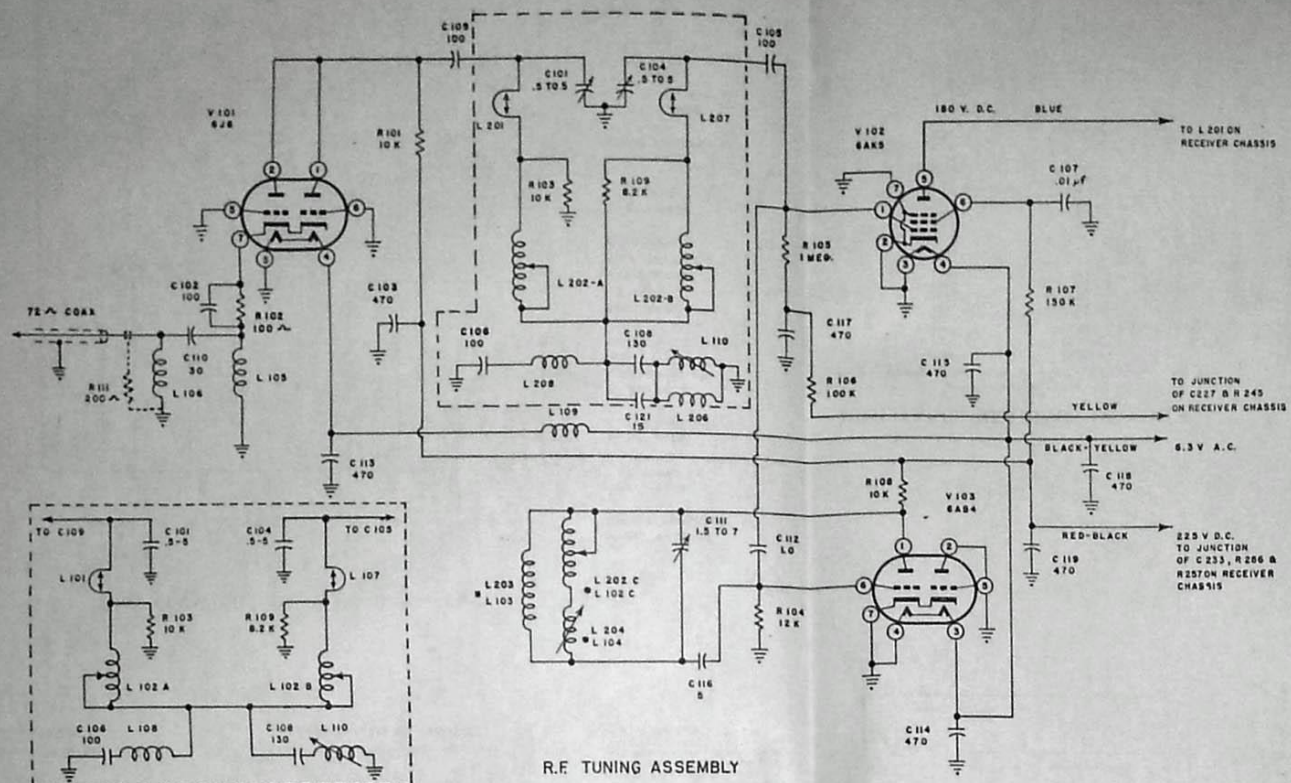
MISCELLANEOUS PARTS LIST

Mansfield and Bradford

RA-108A

Date of Issue 11/23/49

Part Number	Description
18002792	Speaker key
21004071	Deflection yoke
21004072	Coil focus key
45000023	Knob control
51000030	Terminal lug ring
45001131	Head dial
25000221	Window safety glass
25000870	Mtg coil and yoke
35000071	Tube CRT 13DP4
09000020	Cushion CRT
09000130	Connector male 8 contact
30011011	Connector pin
35000340	Spring contact cab
35000871	Bracket tube clamp
35002721	Plate AC interlock
35005232	Plate clamp
36000610	Clip key
36000650	Clip tube contact
37000641	Clamp back panel
37001231	Clamp tube
45002200	Assembly head
64001291	Mask CRT 19
21004073	Connector female 2 contact

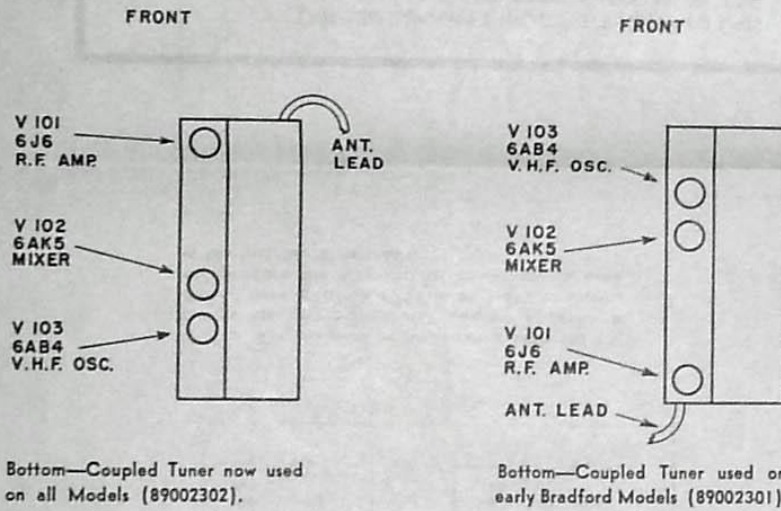


R.F. TUNING ASSEMBLY
(BOTTOM-COUPLED INPUTUNER)

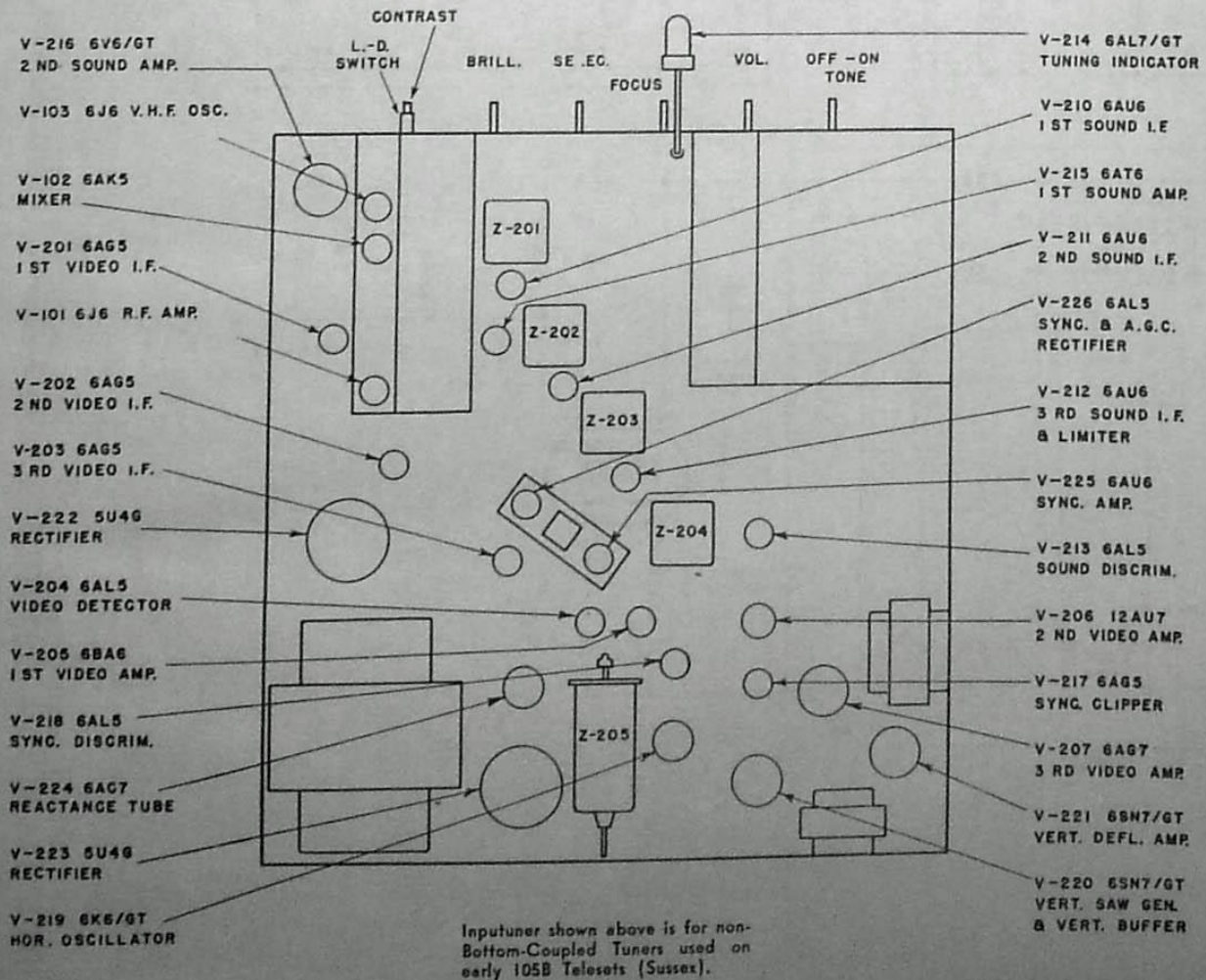
Date of Issue 9/22/49

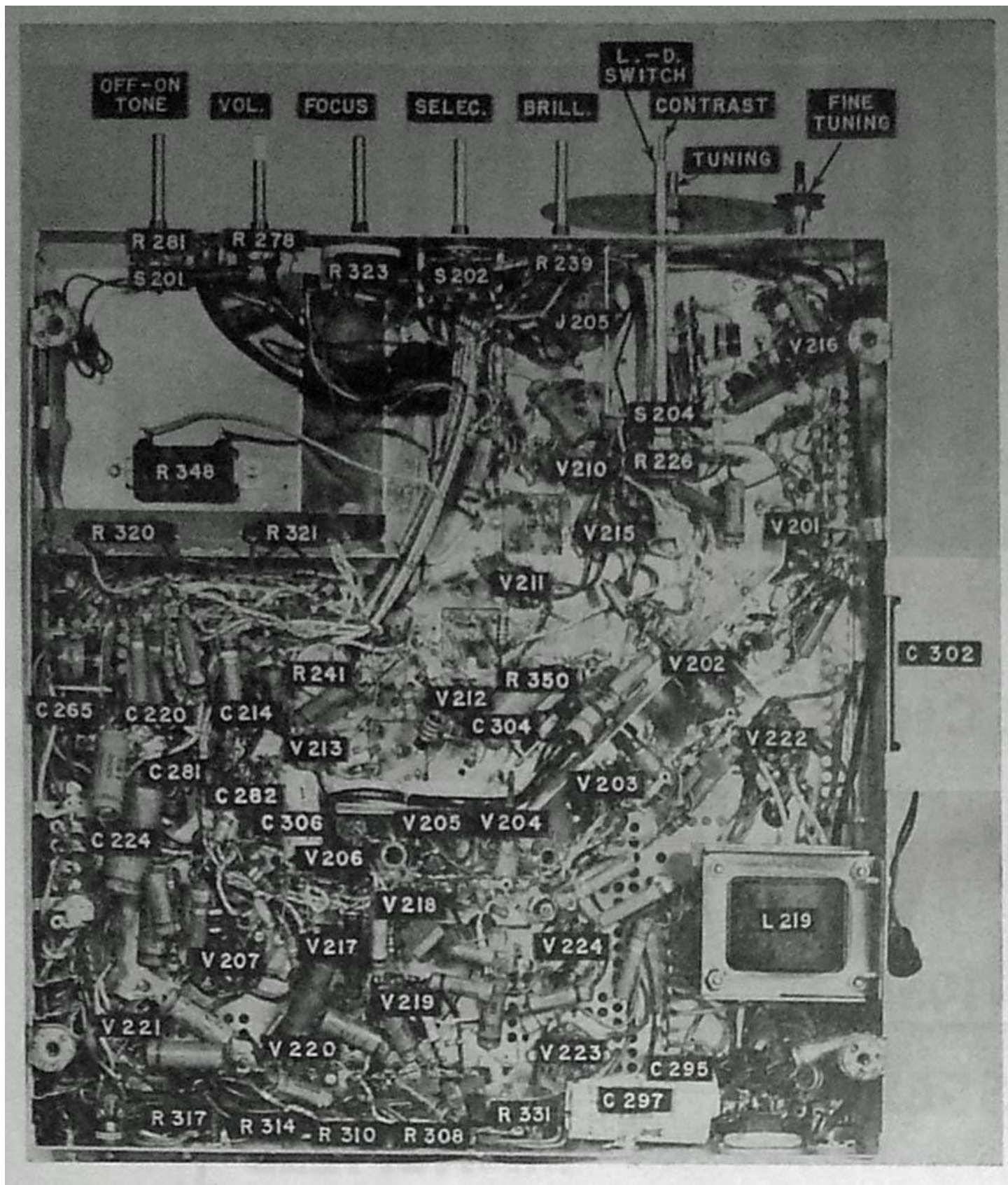
NOTE: The diagram above, when substituted for the portion of the Inputuner diagram enclosed in dashed lines, plus the addition of R-211 as shown, will produce the diagram for the Inputuner used in the first 500 Bradfords.

TUBE LOCATION (BOTTOM-COUPLED INPUTUNERS)



TUBE LOCATION RA-105-B & RA-108-A





RESISTANCE MEASUREMENTS—ALL READINGS TO GROUND
(RA-105B and RA-108A Main Chassis)

RESISTANCE READINGS OF COILS

(All readings in ohms)
All coil readings shown were taken with coils disconnected.

Symbol	Reading
L201	0.8
L202	0.1
L203	0.8
L204	0.8
L205	0.1
L206	0.1
L207	0.8
L208	0.1
L209	0.1
L210	0.1
L211	0.8
L212	0.1
L213	8.8
L214	8.8
L215	8.8
L216	1.0
L217	8.0
L218	1.2
L219	0.1
L220	0.1

Tube	1	2	3	4	5	6	7	8
V201	3M	0	.05	0	18K	18K	0	
V202	3M	0	.05	0	18K	18K	0	
V203	.1	100	.05	0	18K	18K	100	
V204	.05	Ne	0	.05	0	Ne	5.5K	
V205	5.5K	0	.05	0	10K	90K	0	
V206	12K	500K	1K	.05	.05	54	56	1M
V207	0	0	Ne	500K	56	50K	.05	5.7K
V209	0	1.5M	Ne	Ne	Ne	Ne	Ne	Ne
V210	1.5M	0	.05	0	7.5K	48K	82	
V211	1.5M	0	.05	0	7.5K	48K	82	
V212	270K	0	.1	0	11K	8.5K	82	
V213	210K	110K	.05	0	0	0	110K	
V214	3.5K	.05	6.1K	1.6M	0	0	0	3.5K
V215	1.5M	0	.05	Ne	Ne	110K		
V216	0	.05	7.5K	1K	800K	220K	0	270
V217	1.5M	0	0	.05	50K	18K	0	
V218	1M	600K	.05	0	50K	Ne	600K	
V219	0	0	11.5K	18K	55K	600K	.05	20
V220	440K	1.5M	0	1.5M	40K	0	0	.05
V221	2.5M	11.5K	0-2.2K	2.3M	11.5K	0-2.2K	.05	0
V222	Ne	Inf.	Ne	5	Ne	6.5	Ne	Inf.
V223	Ne	Inf.	Ne	5	Ne	6.5	Ne	Inf.
V224	0	.05	0	1.5M	10	19K	0	31K
V225	0.1	0	0	0.1	6.4K	48K	100	
V226	50K	540K	0.1	0	29K	0	29K	

*V209

Ne 160K 0-72K .05

Selector switch in "Television light on" position.

† Depends upon setting of R-241

° Depends upon setting of vertical linearity control (1K is typical)

VOLTAGE MEASUREMENTS—ALL READINGS TO GROUND
(RA-105B and RA-108A Main Chassis)

Tube	1	2	3	4	5	6	7	8	9
V201	-.77	0	6.3AC	0	117	117	0		
V202	-.77	.45	6.3AC	0	150	150	.45		
V203	0	1.2	6.3AC	0	125	125	1.2		
V204	0	Ne	0	6.3AC	0	Ne	-.45		
V205	-.45	0	6.3AC	0	240	80	.55		
V206	223	0	6.3	6.3AC	6.3AC	2.7	2.7	30	0
V207	0	0	Ne	2	2.7	170	6.3AC	240	Ne
V209	0	18	Ne	Ne	Ne	Ne	Ne	Ne	Ne
V210	-.35	0	6.3AC	0	250	150	.55		
V211	-.35	0	6.3AC	0	250	150	.55		
V212	-.47	0	6.3AC	0	210	48	18		
V213	0	0	6.3AC	0	0	0	0		
V214	1.2	6.3AC	260	-.15	0	0	0	1.2	Ne
V215	-.15	0	0	6.3AC	Ne	Ne	145		
V216	Ne	6.3AC	222	222	-.4	-.17	0	11.8	
V217	.33	0	0	6.3AC	14	17	0		
V218	-.92	-.5	6.3AC	0	-.16	Ne	-.5		
V219	0	0	185	100	-.41		6.3AC	0.5	
V220	-.55	150	0	1.3	.05	0	0	6.3AC	
V221	-.1	283	10.5	-.1	283	10.5	6.3AC	0	
V222	Ne	400	Ne	445AC	Ne	445AC	Ne	400	Ne
V223	Ne	400	Ne	445AC	Ne	445AC	Ne	400	Ne
V224	0	6.3AC	0	-.11	0	72	0	160	
V225	0	0	0	6.3AC	270	105	1.25		
V226	64	64	6.3AC	0	55-06	0	55-06		

All readings in volts.

* V209

10 11 12
Ne 6.3AC 6.3AC