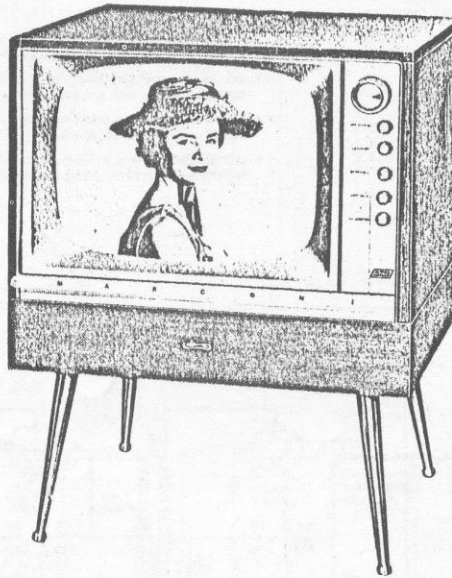


159

MODEL TV-102T17
CHASSIS TV-500

MARCONI TELEVISION

Technical Data and Parts List



GENERAL DESCRIPTION

The chassis covered in this service note is similar electrically to the chassis described in the "TECHNICAL DATA AND PARTS LIST" for Model TV-2832, dated January 1956, but differs in the type of R.F. tuner used. With the exception of parts list shown below, R.F. Mixer and Oscillator alignment procedure and the diagrams of connections incorporated in this service note, all other information pertaining to Model TV-102T17 will be found in the "TECHNICAL DATA AND PARTS LIST" for Model TV-2832, Chassis TV-V-308, dated January 1956.

PARTS LIST


PART NO.	DESCRIPTION	PART NO.	DESCRIPTION
516-453	Cabinet - Walnut	4-512-821	Loudspeaker, 5½" - Less O.T.
1-516-453	Cabinet - Mahogany	514-248	Front Frame Assembly
2-516-453	Cabinet - Lined Oak	516-459	Back Plate Assembly
1-513-525	Knob - Channel Selector	3-513-526	Retainer Strip (Bottom)
2-513-523	Knob - Fine Tuning	511-853B	Screen - Bottom of Cabinet
1-513-524	Knob	511-546	Feet - Plastic
516-444	Cup	2-514-299	Medallion
514-245	Mask (Burnt Gold)	1-513-669	Shaft - Extension
7-510-248	Safety Glass, Clear - 17 5/8" x 14"	515-531	Tuner

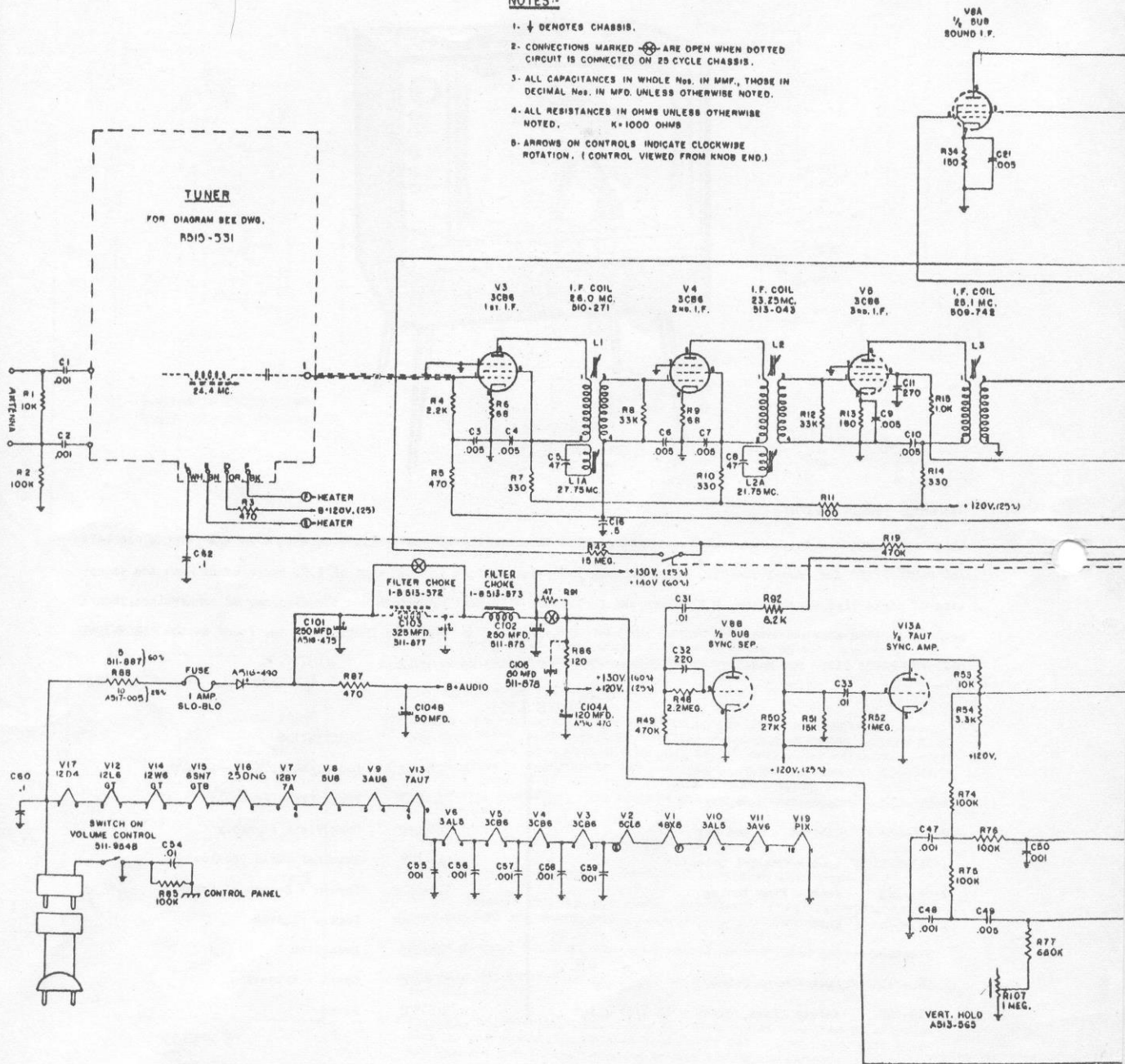
CANADIAN MARCONI COMPANY

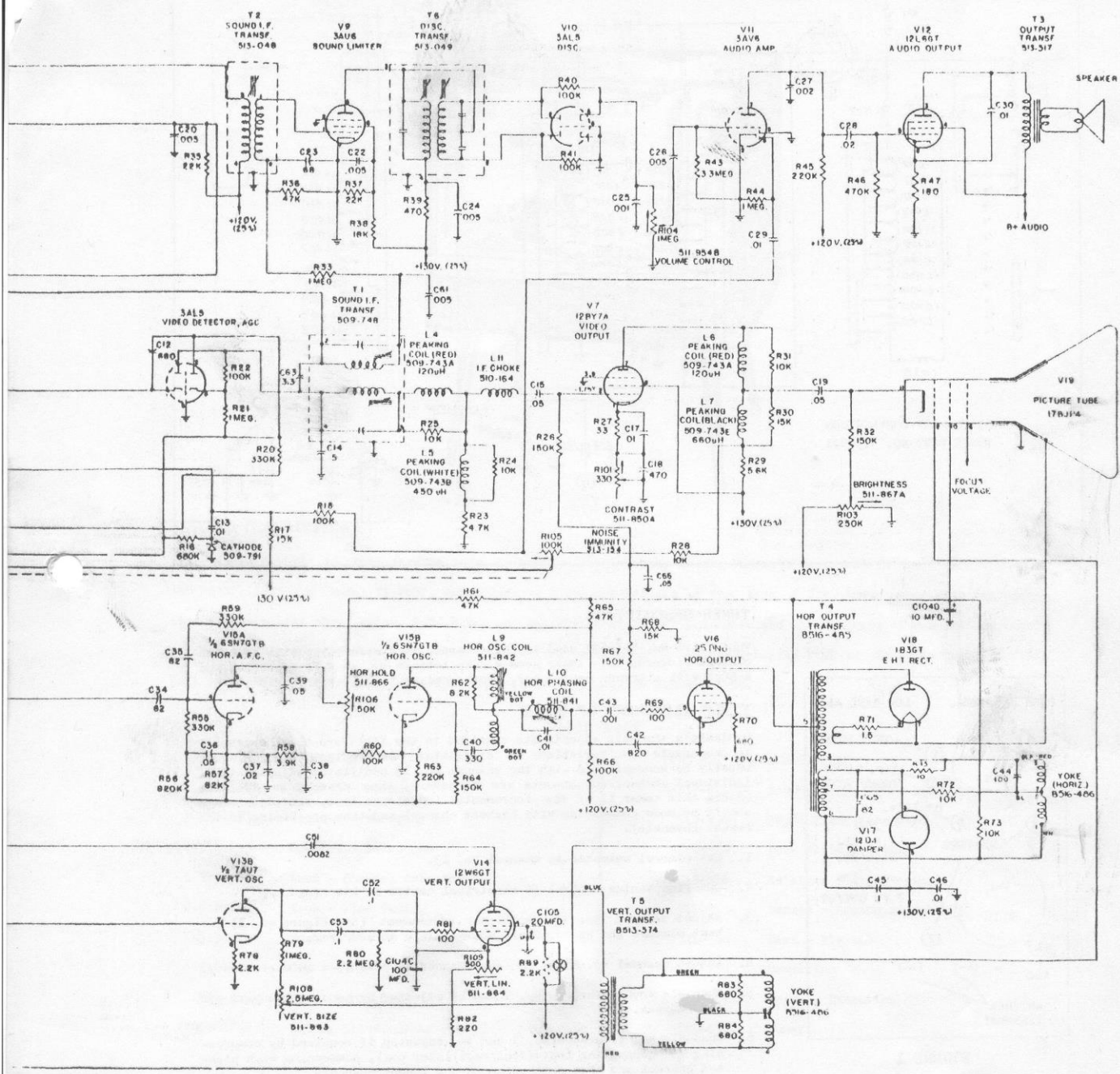
Established 1902

VANCOUVER — WINNIPEG — TORONTO — MONTREAL — HALIFAX — ST. JOHN'S

NOTES:-

1. ↓ DENOTES CHASSIS.
2. CONNECTIONS MARKED  ARE OPEN WHEN DOTTED CIRCUIT IS CONNECTED ON 25 CYCLE CHASSIS.
3. ALL CAPACITANCES IN WHOLE NOS. IN MMF., THOSE IN DECIMAL NOS. IN MFD. UNLESS OTHERWISE NOTED.
4. ALL RESISTANCES IN OHMS UNLESS OTHERWISE NOTED. K=1000 OHMS
5. ARROWS ON CONTROLS INDICATE CLOCKWISE ROTATION. (CONTROL VIEWED FROM KNOB END.)





D516-450

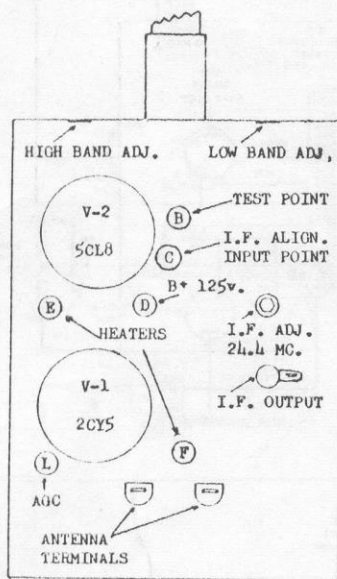
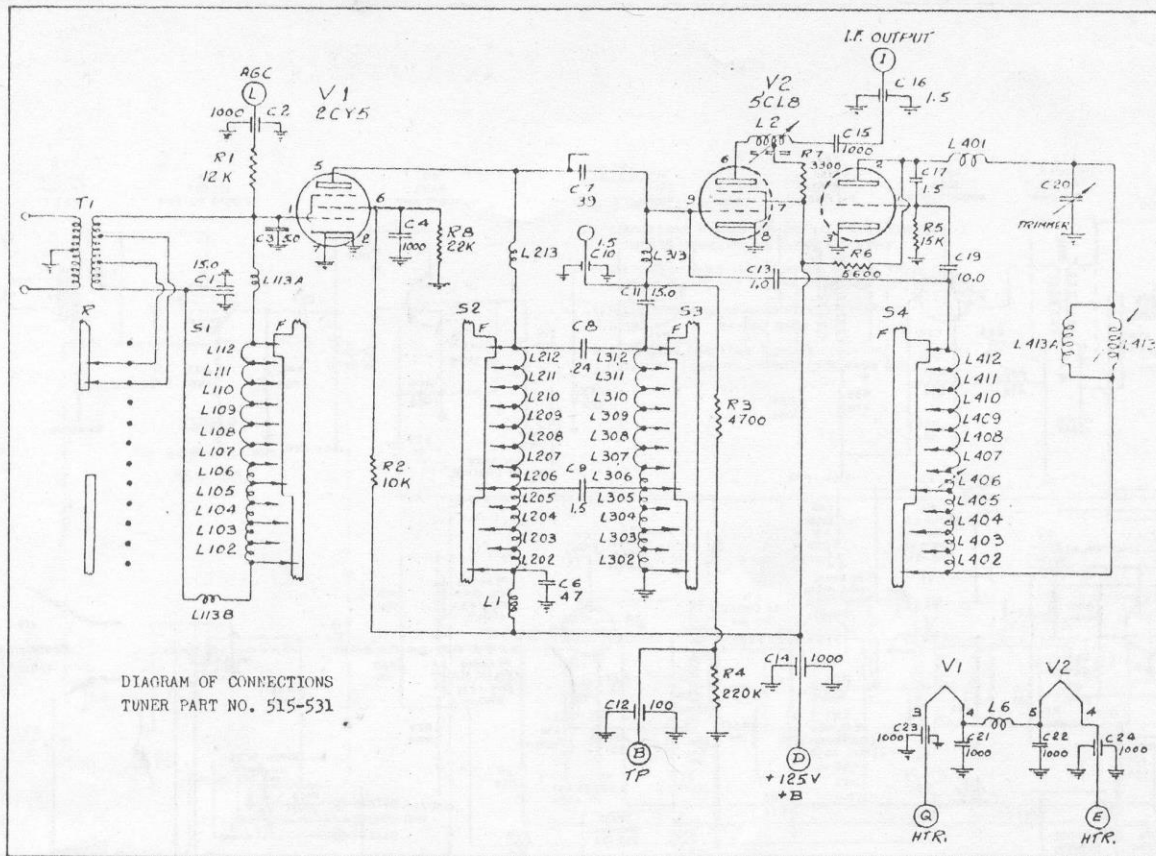


FIGURE 1

TUNER DESCRIPTION

Tuner Part No. 515-531 used in this chassis is a wafer type with improved contact fingers. This tuner uses a 2CY5 tetrode as an R.F. amplifier and a 5CL8 with a triode oscillator, pentode mixer.

FIELD ALIGNMENT OF TUNER

Ordinarily the only adjustments required in the field are those necessary to compensate for variations in oscillator tube replacements. This can usually be accomplished with the channel No. 13 oscillator adjustment. If individual channel adjustments are necessary, then proceed as follows: (Since this tuner is of the incremental inductance type, all adjustments should be made commencing with highest channel and then proceeding to the lowest channels).

1. Set channel selector to channel No. 13.
2. Set fine tuning control to electrical centre of its range.
3. Adjust channel No. 13 oscillator adjustment (See Figure No. 1) for best picture and sound. Use a non-metallic screwdriver.
4. Adjust channel No. 6 in the same manner as described in operation 3.
5. Channels No. 12 through No. 7 can be adjusted by bending the hair pin inductances.
6. Channels No. 5 through No. 2 can be adjusted if required by compressing or separating individual oscillator coil, commencing with highest channel and then proceeding to the lowest channels.

CANADIAN MARCONI COMPANY

SERVICE DEPARTMENT - 6035 COTE-DE-LIESSE ROAD
MONTREAL 9, P. Q.