







ACTUAL TV SCREEN PHOTOS OF
THIS CAMERA IN OPERATION



BASED ON LANDS' COLOR THEORY, AND USING
TWO VIDICON TUBES, THIS CAMERA WAS
DESIGNED AND DEVELOPED BY GARY DAVIS.
IT WAS FEATURED IN RADIO-ELECTRONICS
MAGAZINE, AND IS THE ONLY KNOWN LIVE
COLOR CAMERA CONSTRUCTION
ARTICLE.

Lowdown on intruder & fire alarms

Radio-Electronics

NOV 22 1969

Make IC hi-fi—a clean 2W
Fixing car tape players—a cinch

Works with your set—
Build this TV Camera for \$100



COVER PROJECT

Build
All-Transistor
TV Camera
for \$100



Radio-Electronics 30-31 TEST REPORT

Radio-Electronics

ALL ABOVE-CORDED
Special 4-Part Story

NEW COLOR TV CAMERA
Now You Can Make Your Own

COSMOS
ALARM CIRCUITS
Stop Burglars Fast

OPERATIONAL
AMPLIFIER IC's
See How They Work

PA SYSTEM PROBLEMS
Solve Them Effectively

PLUS
Work Your's Service Show
L.A. Tech. 20 New Workable Sops
How to Stop TV Transferring Channels

BUILD
this **COLOR**
TV CAMERA
for about \$400

RADIO-ELECTRONICS 1969 & 1975















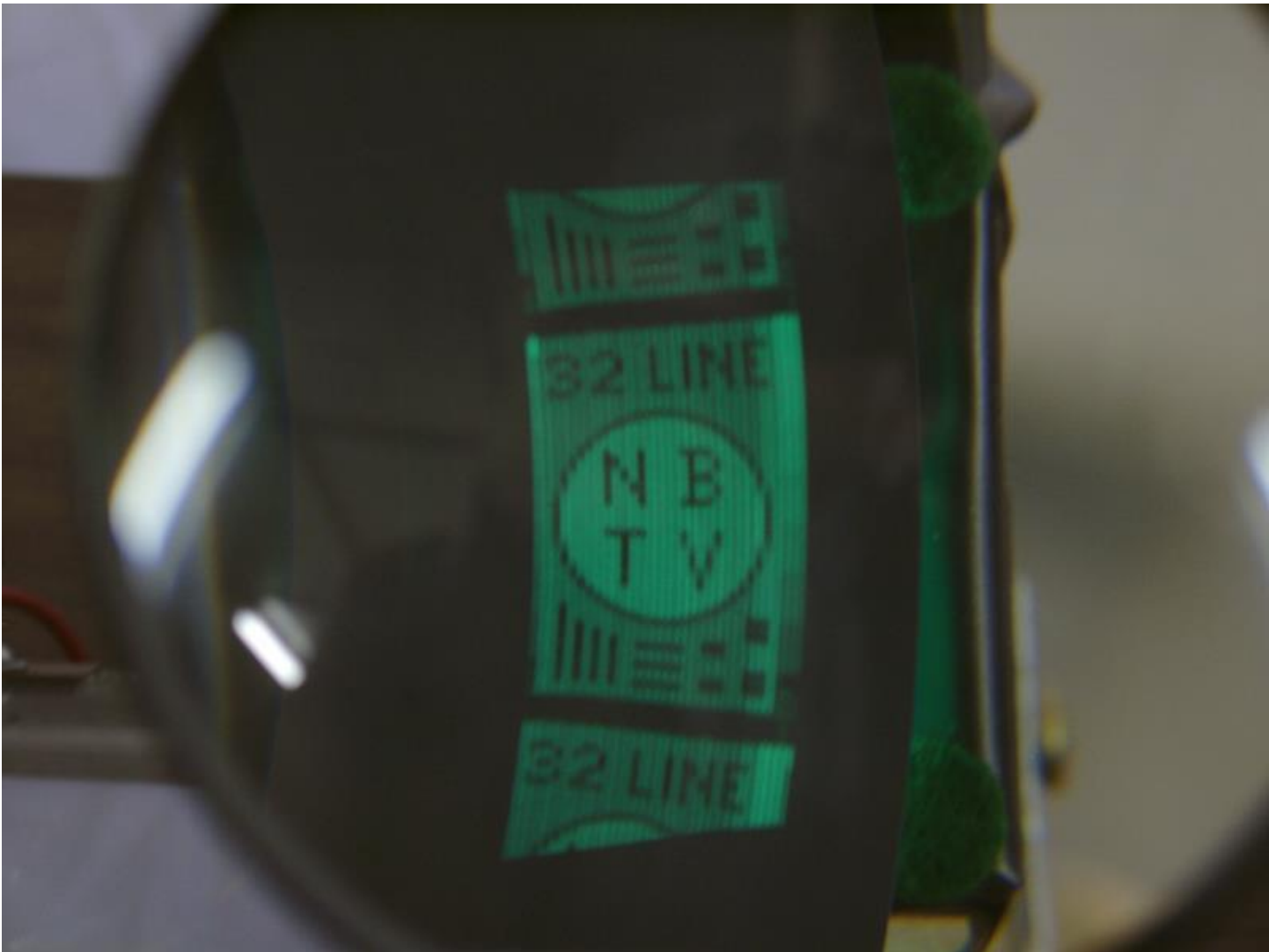














FELIX



THE CAT TI

32 LINE



32 LINE



RCA 21CT-55
Restored New Old
Stock
\$4500.00

Buy-Sell-Restore
Phonographs

All Antique Automated Music
Music Boxes

Class M
Antiques

Paul A. Baker
4066 Loring Ave. Blasdell, NY 14219
(716) 826-2192

(716) 826-2192







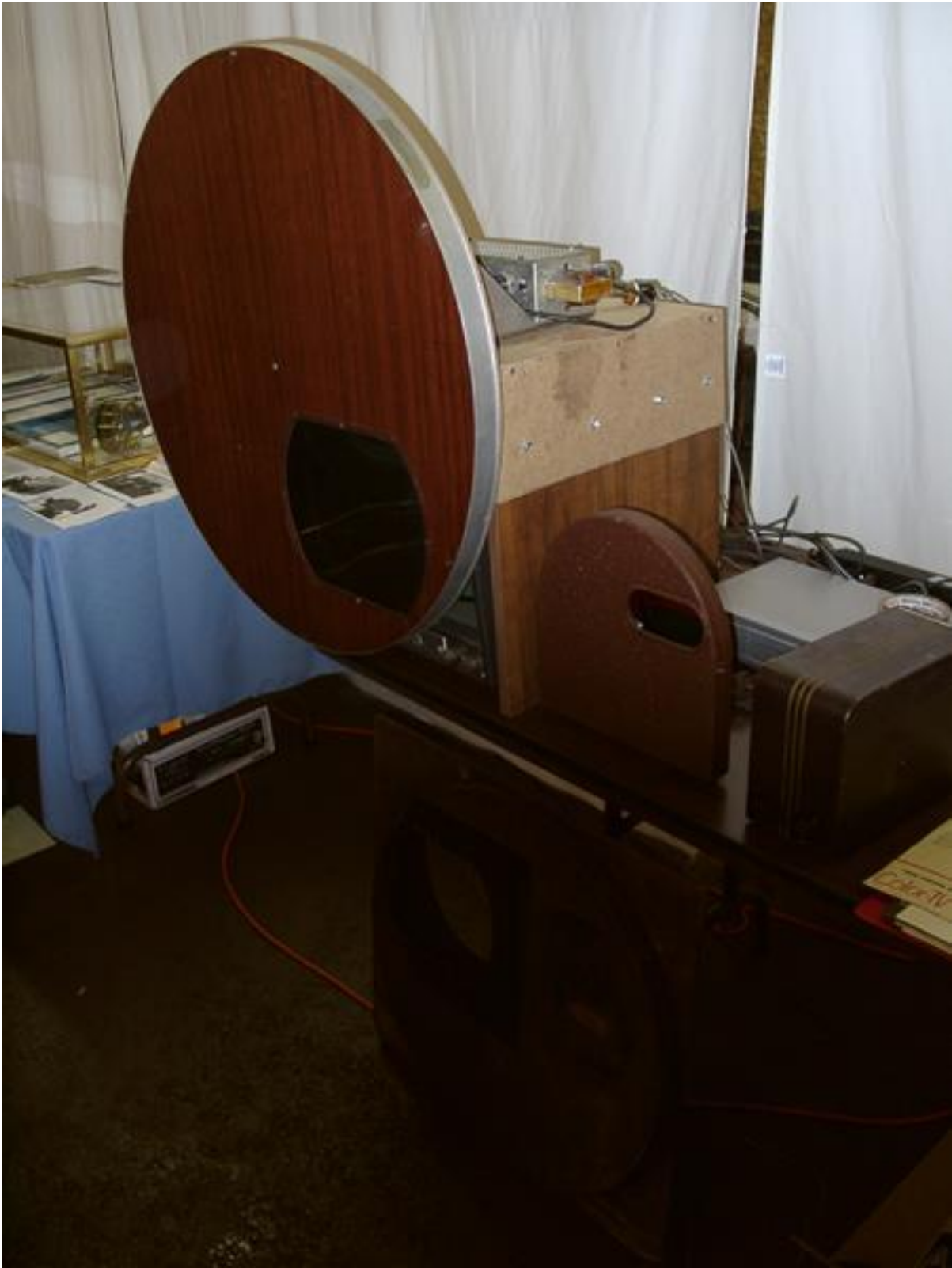




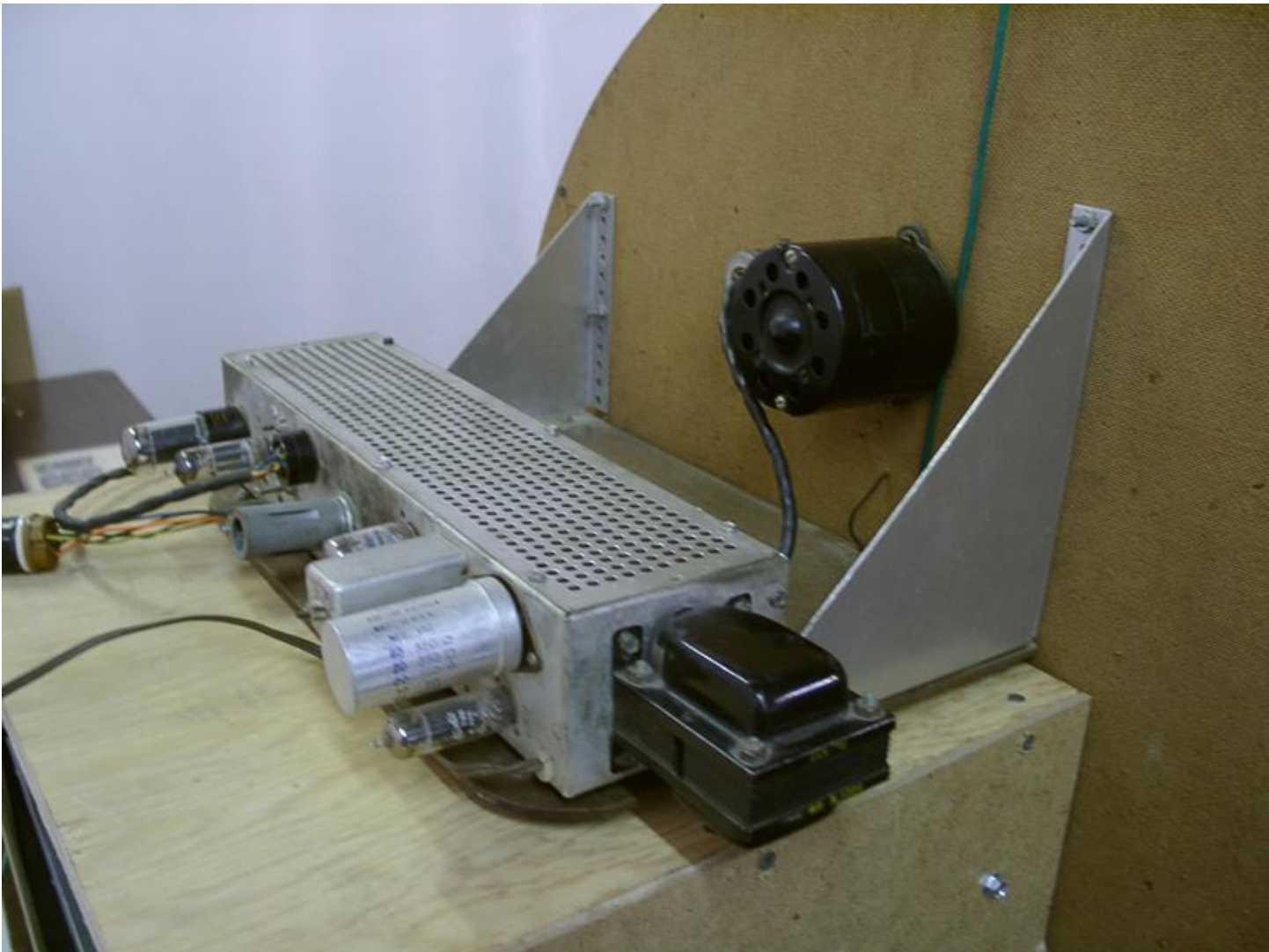


































Model 10-600

Model 110C

Model 382-40

RCA TELEVISION

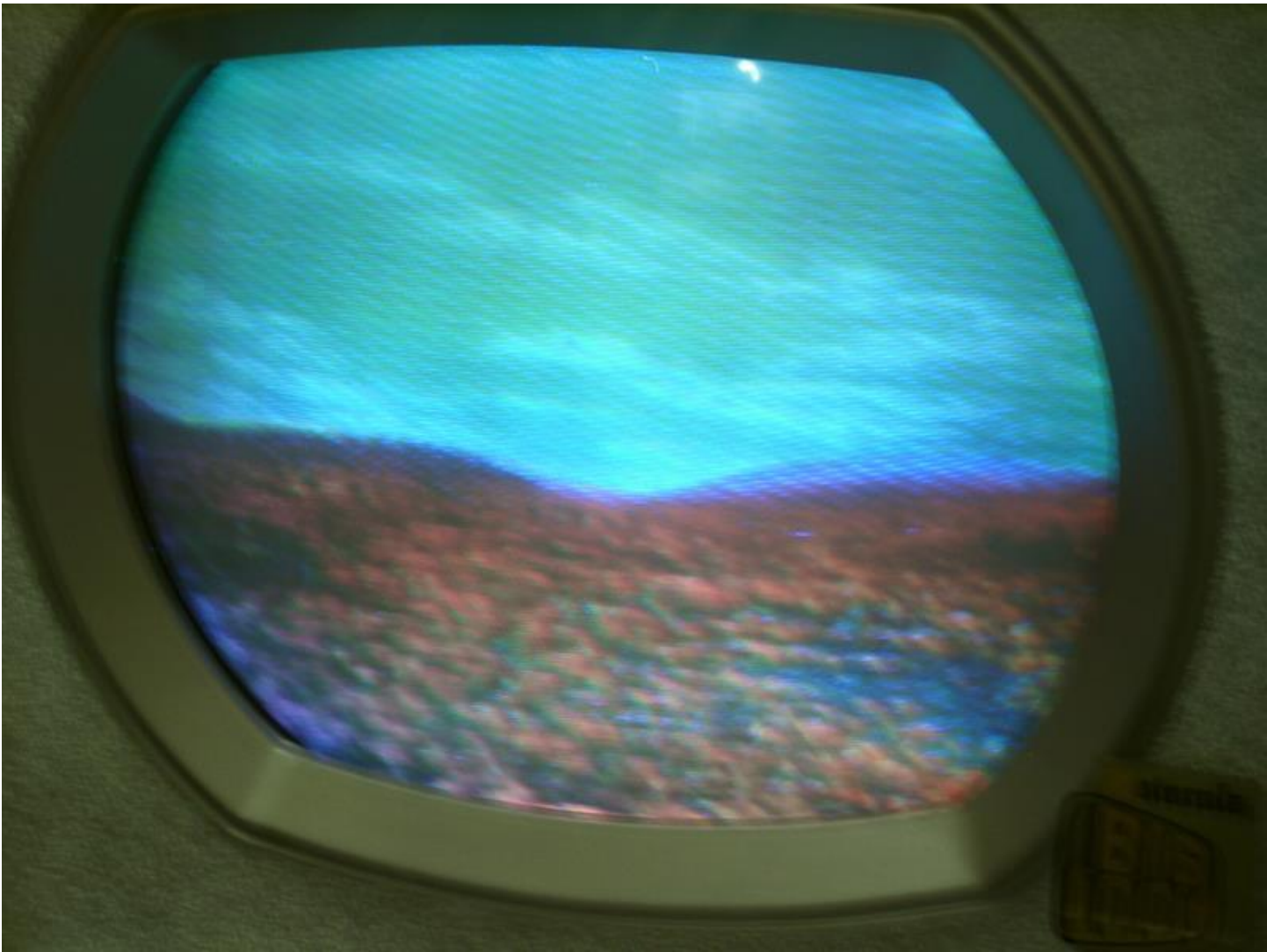
RCA TELEVISION













Stereo
BIG
SCREEN

Color TV















15GP22

This is the first production color tube made in 1964. It was used by RCA, Westinghouse and others in their first color sets.

30BP4

This tube was made by DuMont in 1951 for the Royal Sovereign. It is the largest black and white tube ever made.



1846
Scotometer
The 1846 was made by George B. Wood. It was the first scotometer to use a lens to measure the brightness of a surface.

1850
Scotometer
The 1850 was the original scotometer. It was made by George B. Wood. It was the first scotometer to use a lens to measure the brightness of a surface.

1829 Image
Orthicon
The Image Orthicon camera tube was used in cameras from 1929 through the mid-1950s. It was the first tube to use an image orthicon.





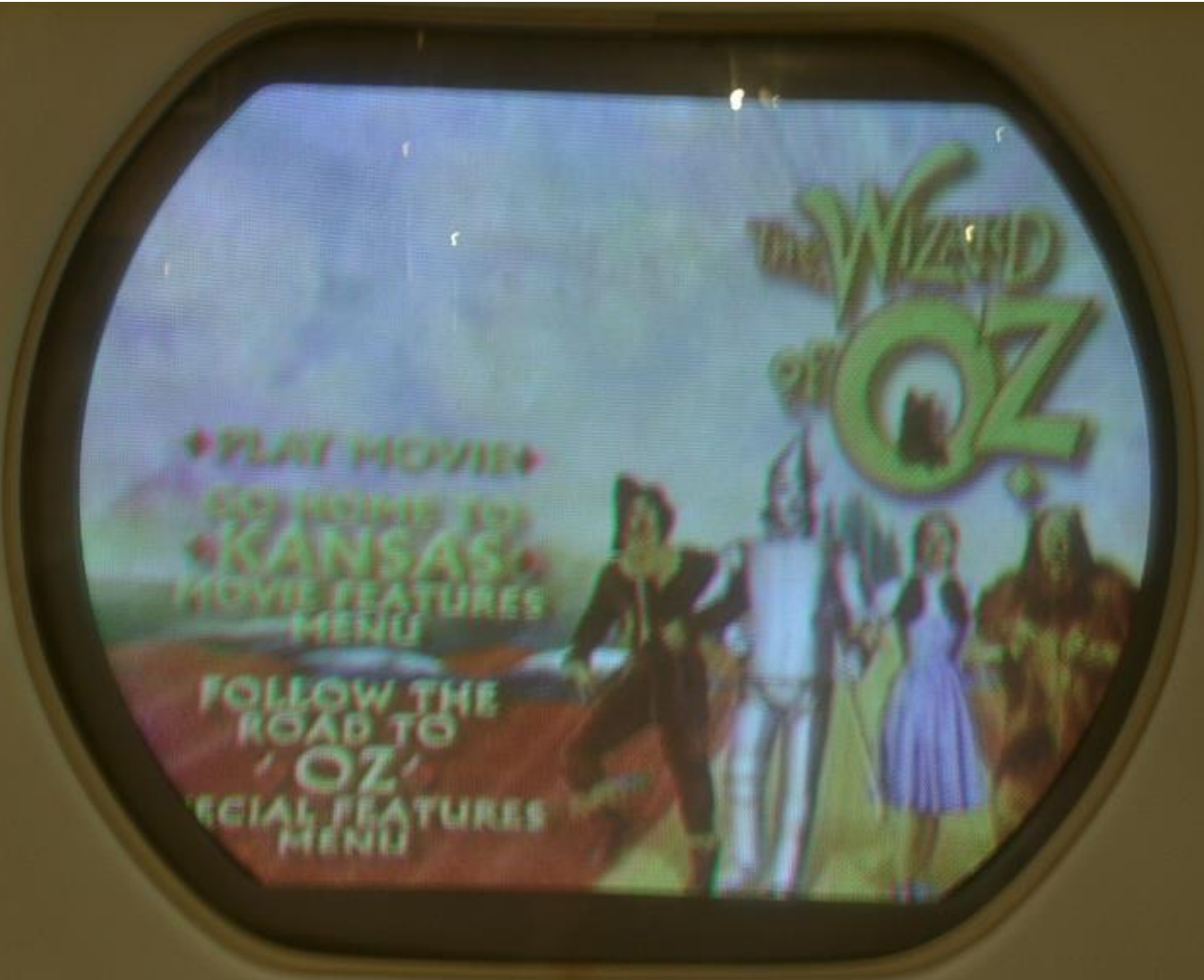






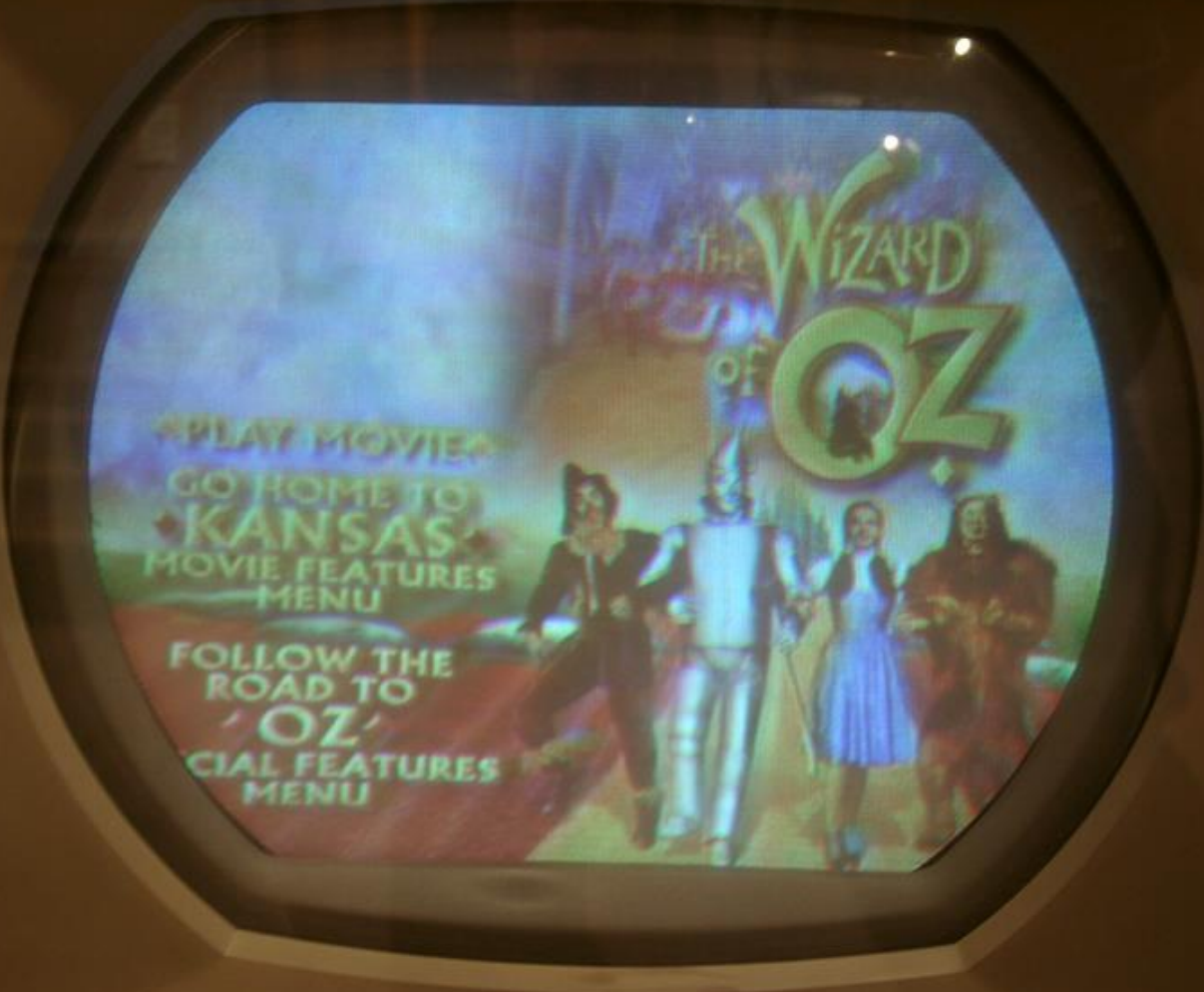






▶ PLAY MOVIE ◀
GO HOME TO
KANSAS
MOVIE FEATURES
MENU
FOLLOW THE
ROAD TO
'OZ'
SPECIAL FEATURES
MENU

THE WIZARD
OF OZ



PLAY MOVIE
GO HOME TO
KANSAS
MOVIE FEATURES
MENU

FOLLOW THE
ROAD TO
OZ
SPECIAL FEATURES
MENU





Fraccaro 30 Line

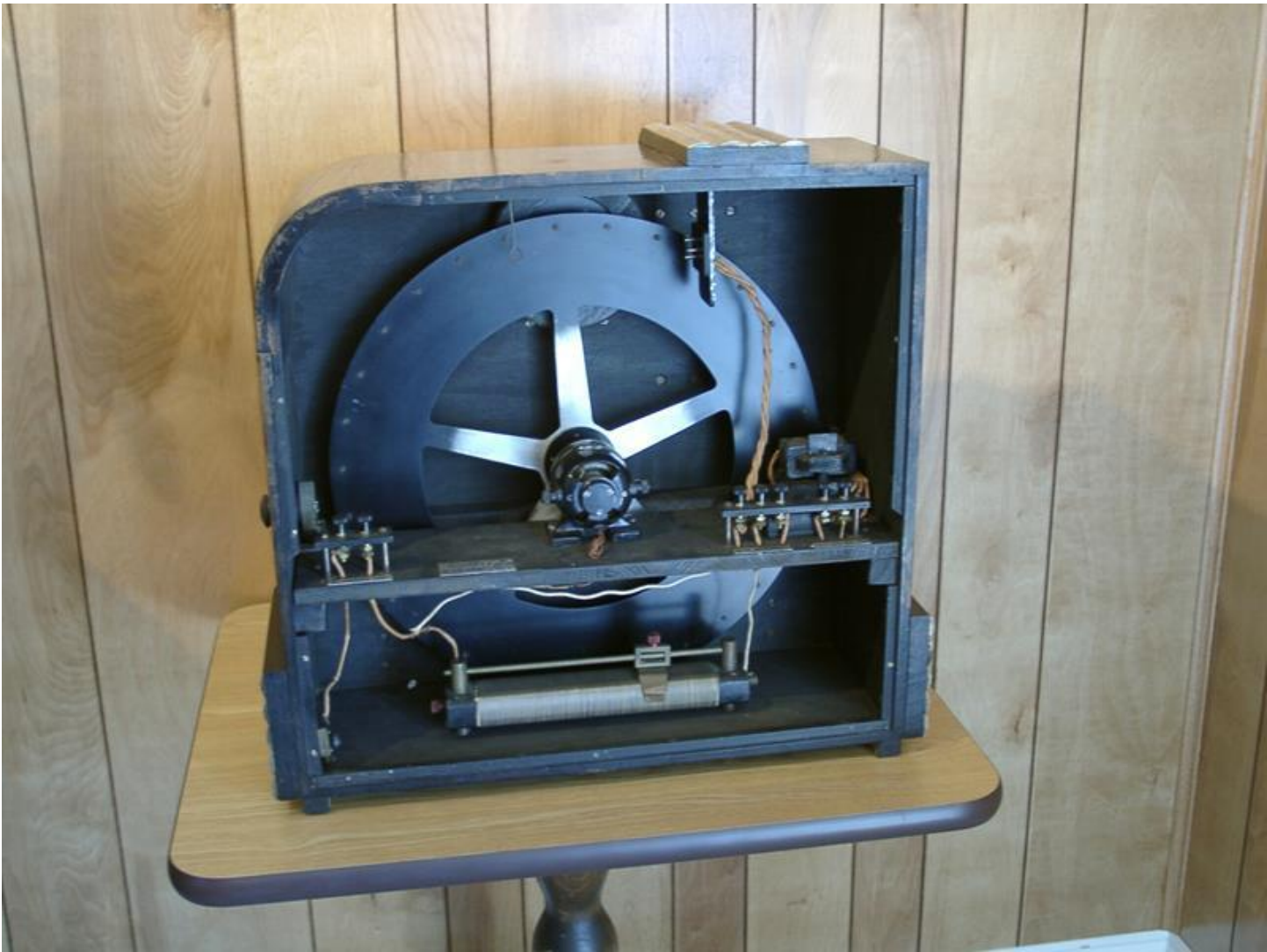
This is one of the most unusual mechanical air conditioning units. It was made in Italy between 1930 and 1932. The styling is from the German Bauhaus movement, which started in the mid 20s and continued until after the war.

It is for the German 30 line aircraft, which was developed from Germany and France. Unlike the Bess system of the same era, the starting is horizontal, with an aspect ratio of 4:3.

Because of the unusual design and the superb condition of the unit, there was speculation that it was an authentic type. However, we are now convinced that it is authentic.

Designed by: [illegible]
Made in: [illegible]
Location: [illegible]
Accession Number: [illegible]









WHAT IN THE WORLD
IS A MIRROR SCREW

???

???

WHO INVENTED THE MIRROR SCREW?

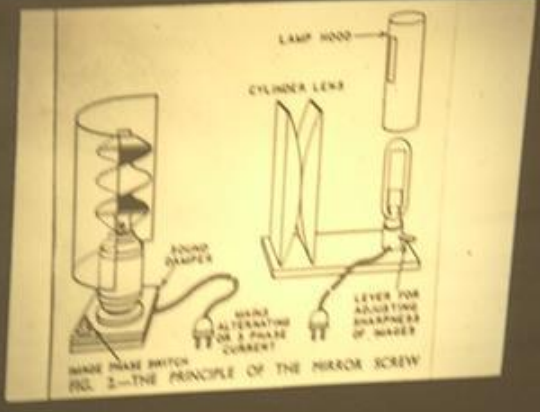
Between 1927 and 1930, the names most commonly associated with patents related to mirror screws were:

- * Francis Van Dusen (USA) (Patent)
- * Gustav von Sittlerbuscher (Austria) (Patent)
- * George M. Wilson (England)
- * O. G. Erdman (USA)
- * Hans Nitzinger (Germany)

The earliest evidence is a drawing and description of a mirror screw in Magazines, by Chalcovian and dated October, 1927.

Though this evidence is of no legal value except in historical Chalcovian is considered the origin of the type of mirror screw being demonstrated here.





A man in a green jacket and glasses is standing to the left of the projector screen, looking at the diagram.



1936 Baird T5 Television

John Logie Baird
1888 - 1946. A
Scottish born engineer
credited with the first
public demonstration
of a working,
mechanical television
system in London on
January 26, 1926 in a
demonstration to
members of the Royal
Institution.









The Bananas Were Blue



RCA, CBS, and the Invention of Color Television

by Alexander B. Magoun, Ph.D.

David Saroff Library

www.davidsaroff.org

The Bananas Were Blue



RCA, CBS, and the Invention of Color Television

by Alexander B. Magoun, Ph.D.

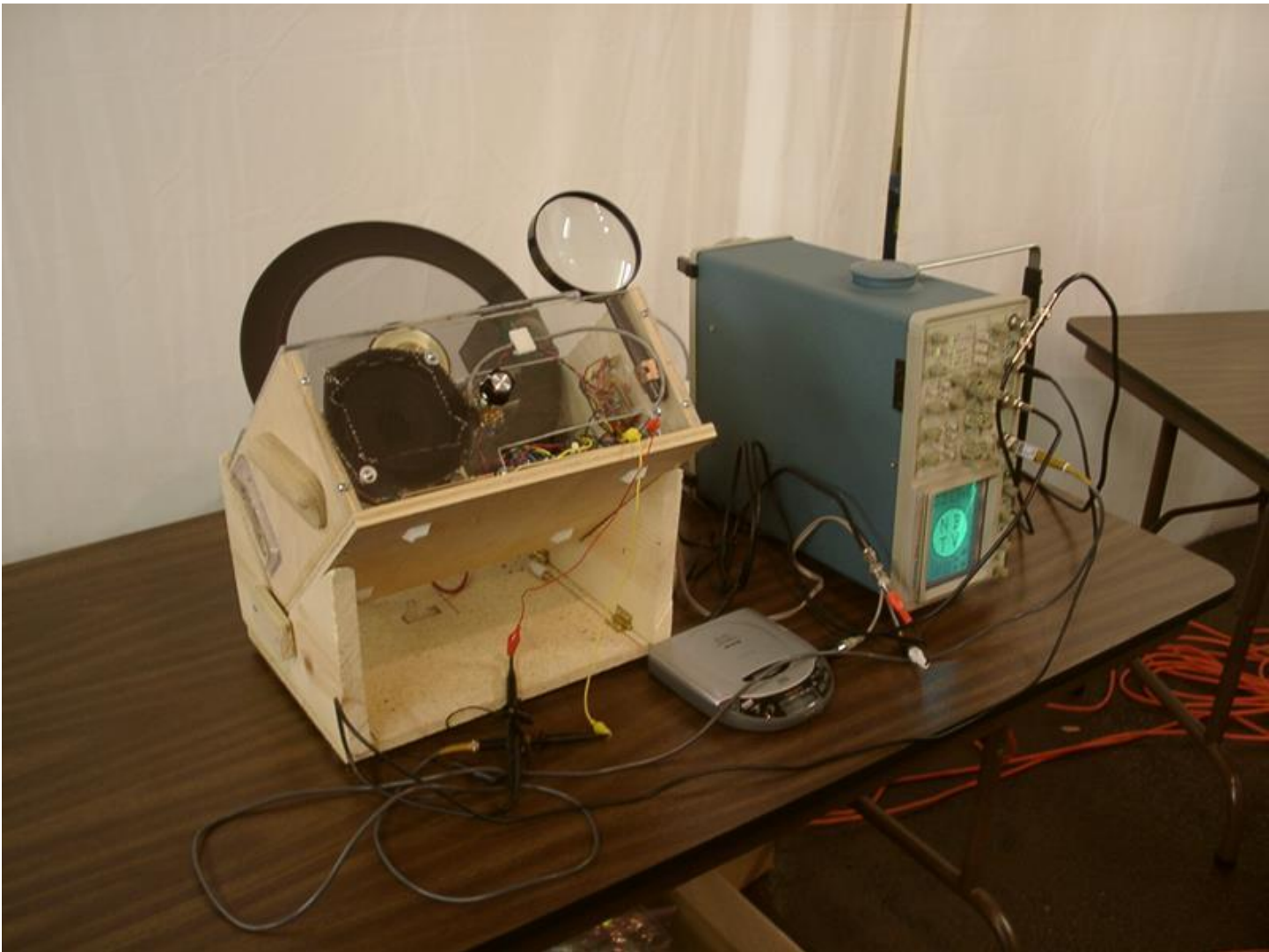
David Sarnoff Library

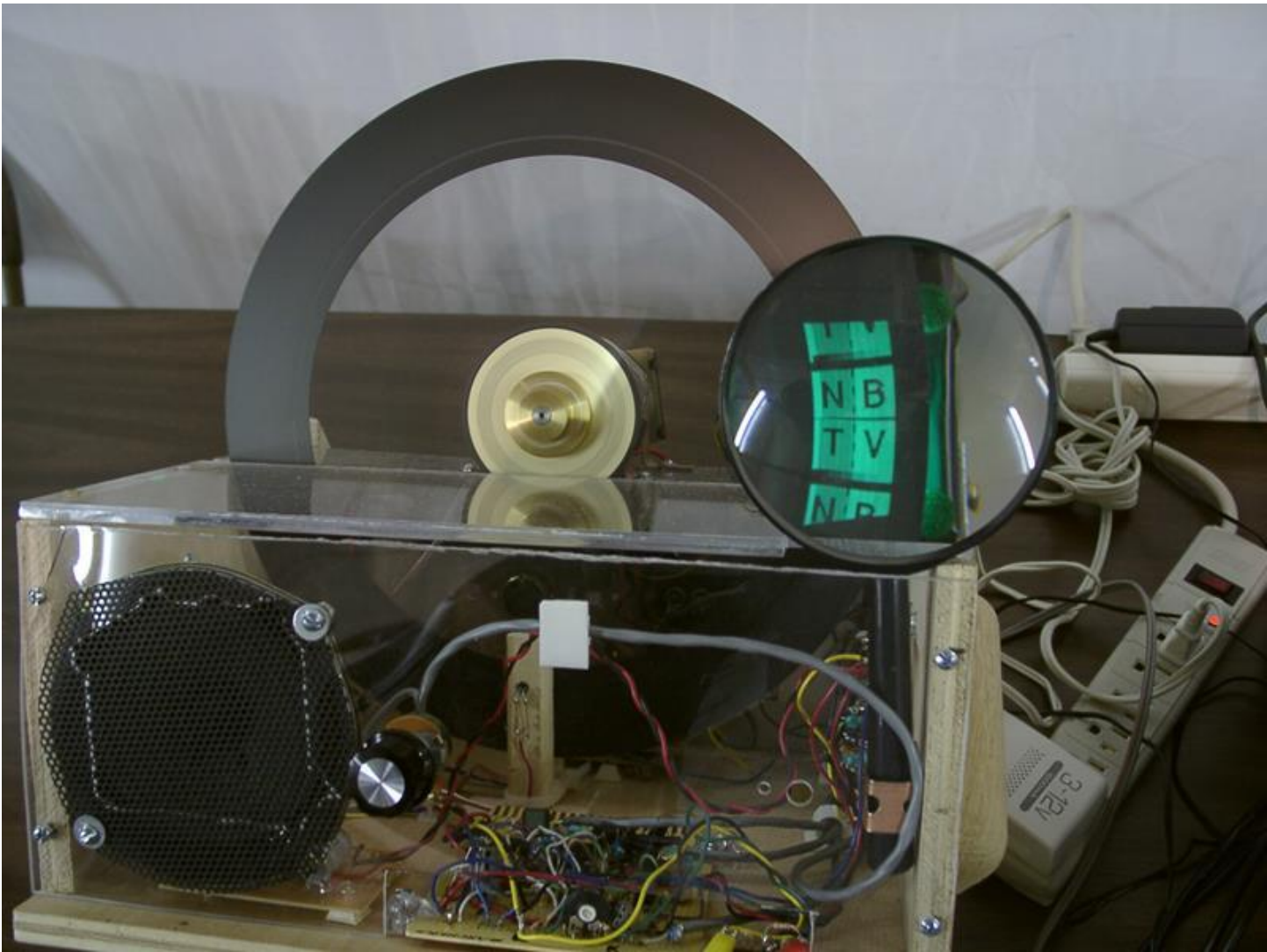
www.davidsarnoff.org























Television Convention

Advertising - Magazines

1939 - GE HR229



1939 - GE HR229

"Look, Phil! It's a Home!"

GENERAL ELECTRIC

1939 TRX12



YOU CAN'T HELP INHALING - BUT

CALL FOR PHILIP MORRIS



ntion







2003 Early Television Convention



2003 Early Television Convention



sion Convention



tion



2003 Early Television Convention



2003 Early Television Convention

















































































2003 Early Television Convention









