

























# KTLA PRESS INFORMATION



LOYD SIGMON (L), EXECUTIVE VICE PRESIDENT AND GENERAL MANAGER OF GOLDEN WEST BROADCASTERS, INFORMS KTLA TELECOPTER CAMERAMAN-ENGINEER HAROLD MORBY (CENTER) AND PILOT-ANNOUNCER LARRY SCHEER THAT THE STATION'S NEWS COVERAGE OF THE WATTS RIOTS HAS WON THE GEORGE FOSTER PEABODY AWARD FOR EXCELLENCE. THE SMALL TELEVISION CAMERA, HELD BY SIGMON, CAN FILL A TELEVISION SCREEN WITH A PERSON'S IMAGE OR REVEAL THE ENTIRE LOS ANGELES BASIN FROM THE TELECOPTER FLIGHT ALTITUDE OF 1,000 FEET. THE FLYING TELEVISION STATION WAS USED EXTENSIVELY IN REPORTING THE RIOT NEWS WHEN TERRORISTS PREVENTED GROUND UNITS FROM GETTING INTO THE WATTS AREA.

5800 SUNSET BOULEVARD • LOS ANGELES, CALIFORNIA 90028 • HO 9-3181  
GWB GOLDEN WEST BROADCASTERS • KMPC LOS ANGELES • KSFQ SAN FRANCISCO • KEX PORTLAND • KVI SEATTLE

# KTLA PRESS INFORMATION



AWARD WINNING RIOT COVERAGE

5800 SUNSET BOULEVARD • LOS ANGELES, CALIFORNIA 90028 • HO 9-3181  
GWB GOLDEN WEST BROADCASTERS • KMPC LOS ANGELES • KSFQ SAN FRANCISCO • KEX PORTLAND • KVI SEATTLE









# TV Veterans Shift Into New Settings

By CYNTHIA LOWRY  
HOLLYWOOD (AP) — The network's fall schedules list 33 shifting new vehicles in their evening schedules, but the fact is that there will really be 36 in the 1964-65 line.

Three old series shows are undergoing such radical body remodeling that if it were not for the presence of the stars, they might be hard to recognize. "The Lucy Show" will move its locale to Hollywood, lose its "family" background and start using guest stars ranging from a team of trained dolphins to Danny Thomas.

## Harold Traders Jobs

"Harold" transfers to the employ of a young couple with a real estate business which, the producers fondly hope, will give the long-playing comedy series all sorts of new situations to work with.

And when Amos Burke, late of "Burke's Law," becomes "Amos Burke, Secret Agent."

## 'Journey Into Fear' To Become TV Series

Eric Ambler, a contemporary writer of suspense and international intrigue novels, and his wife, Joan Harrison, who produced most of Alfred Hitchcock's television shows, will write and produce a series for next season named for one of Ambler's best books, "Journey Into Fear."

just about the only two points of recognition will be star Gene Barry and that luxury limousine, which he will be driving himself for a change.

Replacement of parts on the Lucille Ball vehicle was dictated by the loss of a vital one, Vivian Vance.

## Need Change

In order to give the series continuity, the season's first show will have Lucy's divorcee housemate marrying and moving away with her young son. At the same time, Lucy's television daughter will enter a California college and, to be near her, the redhead staves West and puts her son in a military school.

"Hazel's" new situation was dictated, according to producer James Fonda, quite simply by attrition.

Hazel's old George Baxter family will be conveniently shopped off in the Middle East, while she shifts to the household of her employer's younger brother and his wife.

Amos Burke will be quitting the Police Department for the Secret Service, its producer alleged, because the character

has been so uninterestingly tongue-in-cheek for two years. There wasn't much left we could do in that area, and besides we'd kidded sex and used just about every Hollywood star in comes pars."

The first show of the season will explain his transition, it titles things up.



HELICOPTER COVERAGE — Pilot-announcer Larry Scher, right, and camera-engineer Harold Moskby help keep TV watchers up to date on LA riot situation; camera can show 36 square block area with wide-angle lens, or pinpoint a single detail.

## Sometimes Press Releases Just Confuse the Readers

By RICK DU BROW  
HOLLYWOOD (UPI) — We read the network press releases.

—From "The Beverly Hills-les": "If Donna Douglas sometimes wonders whether she's really Donna Douglas or Ely May Clampett, it's no surprise."

No, probably not. —From NBC-TV: "Producers kg disadvantage in placing practical jokes," says Art Linkletter. "People like to see if I can take it as well as dish it out."

And some people don't care at all.

—From "Password": "For other people 'Password' is sheer entertainment. For Allen Luchter, moderator of the word association game... it's a way of life."

You're sure you want that

who made a fortunate mistake. —From "Shindig": "It's the city of Boston was accident; the show that started landed because of an error in books on with another."

The early 13th century military marching singer J. P. believed that the Charles Ritz set in interviews... was a great inland water recreational TV debut. Mobery's soon they found out that (don't cry No More). The want, but they stayed anyway. By and the P. J. Proby a la SEA John Harvard made (the Year Monkey De-athful?) "34"

In THAT'S what happened! No comment.



## TV Today

- |   |   |
|---|---|
| <p><b>5:00 P.M.</b></p> <p>1 SHEZANG CHINA</p> <p>2 THE NEWS HOUR<br/>Ward, George, Miles, West, Amos, Moore</p> <p>3 LAUREL AND HARDY</p> <p>4 KELLY BARTY</p> <p>5 LLOYD THAXTON SHOW</p> <p>6 WHAT'S NEW</p> <p>7 WEEKLY DRAMA</p> | <p><b>9:00 P.M.</b></p> <p>8 OUR PRIVATE WORLD</p> <p>9 VALENTINE'S DAY<br/>Val uses his unique bag of tricks to get publicity pages in the hands of a famous actress starlet.</p> <p>10 MUSEUM MOVIE</p> <p>11 FESTIVAL OF ARTS</p> <p>12 DINO</p> <p>13 ALAN WATTS' SPECIAL</p> |
|---|---|



A CLOSER LOOK

# KTLA Telecopter Provided Top Coverage of LA Riots



of cameraman engineer Harold Morby's camera can show six fields.

ases  
lers

—From "Standing": "Shining" the show that started it all, ricks on with another first by introducing singer J. P. Mokey to televiewers . . . In his national TV debut Mokey sings "Don't Cry No More," "Be Diddy" and the P. J. Proby song, "Can Your Monkey Do The Dog?"  
No comment.

By ERNIE KREGLING  
Tribune Television Writer

Although their faces were always out of camera range the names of Larry Scheer and Harold Morby were probably the most frequently heard names during the South Los Angeles the last days riots.



KREGLING

With the vast majority of TV sets tuned to KTLA, Channel 5, during this period we all heard their names every time the station cut to the camera-equipped helicopter for air views of the activity.

True appreciation of their work comes when we realize that Larry Scheer, the pilot-narrator, not only flies the plane at low altitudes, but watches the ground and reports what he sees. He also keeps one eye on the camera's monitor and one on the off-the-air receiver nearby. Two radio channels, often carrying up to eight voices at a time, are constantly coming over his earphones with instructions, suggestions and orders.

Cameraman Hal Morby holds the 14-pound Japanese Coto camera against his shoulder instinctively following Scheer's narration.

**Hours in Air**  
Considering the hours these two men spent in the air and on the air no responsible observer can seriously fault their performance. This viewer

thought the narration was intelligent, literate, non-repetitious and subdued. The only serious complaints have come from sources as predictably negative in their approach to television that they must be ignored as only the whining, nagging and sneering for which the masses have become infamous.

Channel 5 is an independent station owned by Gene Autry. He also owns radio station KMPX which has two helicopters and two hard-wing planes used extensively during the riots.

Other Los Angeles stations were totally without resources when it comes to reporting civil strife, fires and floods. KTLA, Channel 5, made a brave effort but lacking a helicopter its efforts were futile. Most other stations, especially the network stations, were singularly unconcerned and virtually ignored the situation.

**Almost 14 Hours**  
KTLA was on the air for almost 14 hours, during which time station manager Arthur Mortenson authorized the pre-emption of all programs and commercials necessary to insure good coverage. In summary all or part of 14 programs were taken over, in addition to 21 commercials with a value of at least \$25,000.

Although other helicopters and air craft were in the air over the trouble spots none had a television camera and so were unable to report in the ground for the close-up views possible by Scheer and Morby's teamwork and equipment. Consequently the Police Communication Center was tuned to KTLA continually and picked up dozens of messages and much valuable information. Fire Department equipment and troops were deployed directly on the basis of the KTLA reports from the air.

As for sniper fire, Larry Scheer says they often saw gun flashes, and had reason to assume they were directed at the low flying plane. Almost every time there was a flash it seemed

board began to respond on the third and fourth day, almost certainly program manager Larry d'Ureux felt, as an organized campaign.

"To my knowledge and recollection," says Scheer, "I didn't use the word 'Negro' one time during the coverage. The phrase Charming Alley had absolutely no connection with the fact some of the people involved were Negroes."

**To Three Networks**  
KTLA's coverage was provided nationally at cost to the three national networks and dozens of local stations. As with the Baldwin Hills dam break and the Hel Air fire a few years ago only KTLA's telecopter could provide viewers everywhere coverage. A craft like this costs about \$50,000 to purchase and \$200 an hour to operate. Its maintenance is a major cost to a local station to support between major tragedies, although it is now being widely used for the station's 4:30 and 10 p.m. news programs.

HOLLYWOOD BOWL  
Thru Sept. 4th  
YOURS TO ENJOY  
TOMORROW AT 8:30  
Gay Nineties Night  
Starring BETTY HUTTON  
The SATO BROTHERS TRUCCO and Company of 200  
Aug. 24 at 8:30  
GLEN MERTZ, Conductor  
DICK BROWNING, Pianist  
Aug. 25 at 8:30  
GLEN MERTZ, Conductor







**HIDE BOTH HANDS** — *Ernie* doctor Walt O'Malley, better known as LA Dodger's boss, fixes his cigar in Chuck Connors' face as he prepares to bandage "wounded" arm in the "franked" series of TV films. It's Mr. O'Malley's debut as actor for Hollywood cameras.

ways below them. They had a strong feeling of being stalked.

**Kept Craft Afloat**

Schoer kept the craft afloat about an hour and forty five minutes on each trip and then headed back to Lockheed Air Terminal for gas, often not turning the motor off.

Schoer's narration, which I considered excellent even under the easiest of circumstances, did bring some public reaction late in the four days coverage. He had coined the phrase Charcoal Alley No. 1 and No. 2 to indicate the various hot spots and in reference to the piles of smoldering charcoal beneath Mrs. But some people thought it a reference to the fact the areas are populated largely by Negroes. The station's switch-

- JERRY WAGNER OVERALL
- 1968 Season
- Aug. 28 11:30-12:00
- CATHY HENDERSON
- Guest Conductors
- SAGUO TO SPRING BERLIN
- MICHELLE / STUART PETER
- Jack Nelson Singer
- 1968 Season 10:00, 11:00, 12:00
- 2:00, 2:00, 1:30 and 1:00
- ON SALE NOW AT
- HOLLYWOOD BUNG
- ALL OFFICES OF THE AUTOMOBILE
- CLUB OF SOUTHERN CALIFORNIA
- ALL U.S. WELLS
- MAGIC CITY STORES
- SOUTHERN CALIF. MUSIC CO.
- ALL MUTUAL AGENCIES
- INFORMATION TO SATELS
- ARRIVE EARLY & ENJOY
- PAVED DRIVING

**Daytime Serial**  
**Will Take Bow**  
**in Sept. 27th**

The five-week daytime serial on NBC is "Morningstar" which is scheduled to begin on the 11 a.m. spot on network beginning Sept. 27. The five main characters are played by Elizabeth Perkins, Guy Jones, Mervyn Dineen, Ed Mallory, Nina Bonner and Gene Ellis. The story concerns the problems of a girl who goes to a big city when tragedy strikes.

**RADIO DIAL**

**AM Index**

3300	750	KFAC	520	KJY	50	KPOL	1280
3410	1410	KFVS	100	KJY	510	KRKO	1190
3510	140	KFOS	120	KKAR	110	KRLA	1110
3610	1200	KGOS	50	KLAC	170	KTVB	1110
3710	1200	KHLS	120	KMPG	110	KWKW	1200
3810	100	KHLS	100	KNE	110	KWKW	1200

**FM Index**

89.5	101.5	KSLA	101.5	KMAN	101.5	KSPC	98.7
90.5	102.5	KSGF	102.5	KROR	97.9	KSTP	99.2
91.5	103.5	KSLC	103.5	KPCB	99.5	KSTC	101.5
92.5	104.5	KLAF	104.5	KPCB	99.5	KSTC	101.5
93.5	105.5	KLAF	105.5	KPCB	99.5	KSTC	101.5
94.5	106.5	KLAF	106.5	KPCB	99.5	KSTC	101.5
95.5	107.5	KLAF	107.5	KPCB	99.5	KSTC	101.5
96.5	108.5	KLAF	108.5	KPCB	99.5	KSTC	101.5
97.5	109.5	KLAF	109.5	KPCB	99.5	KSTC	101.5
98.5	110.5	KLAF	110.5	KPCB	99.5	KSTC	101.5



**Disneyland after dark**

IN PERSON

**WOODY HERMAN**  
AND HIS ORCHESTRA

**OPENING TONIGHT**

APPEARING  
AUGUST 20, 21, 22,  
24, 25, 26, 27, 28

9:00 P.M. 30,000 LEAGUES EXHIBIT IN TOMORROWLAND

REGULAR DISNEYLAND ADMISSION PRICES

OPEN 'TIL MIDNIGHT  
SUNDAY THRU THURSDAY  
AND 'TIL 1:00 A.M.  
ON FRIDAYS & SATURDAYS

**Disneyland**  
WALT DISNEY PRODUCTIONS

of Pancakes  
COVINA

E MENU  
NT of COMPANIES  
ANDARDS

**Cool Summer Fun**  
for the entire Family...

**Free Entertainment**

Raggedy  
ann & andy  
in a Fun  
Performance  
of  
Song & dance

on stage 1 pm & 3 pm

**Santa's Village**

Hwy 18  
Near Lake Arrowhead  
Open daily















instant  
news





"Viewers in this area have come to rely upon Channel 5's news crew, augmented by KMPC's mobile units, for instant information . . ."

**Los Angeles Herald-Examiner**

"KTLA should be congratulated on a first-rate job of Public Service."

**Santa Monica Evening Outlook**

"Thousands of persons were turned away from the scene by police and told to go home and watch the KTLA live television coverage . . ."

**Los Angeles Herald-Examiner**

"Your report (was) my official contact with what was happening. This was real public service."

**The Mayor of Los Angeles**

"One of the most outstanding pieces of news-as-it-is-happening reporting I have ever seen."

**Leo Burnett, visiting from Chicago**

INSTANT NEWS adds prestige to the advertiser's public image. KTLA's news service not only wins the unqualified plaudits of the press, it has gained the deep appreciation of all Southern California television viewers. This gratitude and respect is shared by the sponsor who automatically receives credit for INSTANT NEWS specials of five to fifteen minutes duration.

KTLA is limiting this news feature to three advertisers. They will rotate equally as sponsors of the INSTANT NEWS specials.

#### COMMERCIAL IMPACT

Sixty second sales messages four weeknights in the first half hour of the George Putnam News!

Audio billboards at the start and close of each special news cutin: "This Instant News Special is brought to you as a public service by . . ."

Visual identification showing your product or service to an appreciative and receptive home audience as a "lower third super" during the special news report.

CONTACT YOUR KTLA ACCOUNT EXECUTIVE TODAY. REPRESENTED NATIONALLY BY 



A Golden West Broadcasters station



KMPC Los Angeles KSFO San Francisco KEX Portland KVI Seattle-Tacoma















There's money in newscasting... but KTLA shows you can't scrimp to make it



What does it take to run a prize-winning, metropolitan area television news operation?

The picture above supplies the answer. Equipment worth \$443,500 and a \$175,000 a year news staff.

These are the basic ingredients that implement the aggressive news policy of KTLA (TV) Los Angeles—a station which walked off with two of the nine "Golden Mike" awards given this year by the Radio & Television News Club of Southern California.

In the judgement of California

scene pictorial coverage, KTLA has nearly a half-million dollars invested in equipment. Among this array are four mobile ground units (1 to 4): station wagon "Prowl Car," with a camera chain, generator and transmitter (\$54,000); two remote trucks, each with two camera chains, switcher and transmitter (\$71,500 each); and a third remote van carrying four camera chains, switcher and transmitter (\$106,500).

**Flying High** • The world's only flying tv mobile unit, the KTLA Telecopter, is the result of three years

ground, includes a 16 mm Auricon Superpro movie camera (\$10,000); a 16 mm Auricon, adapted by Marland-Berlin (\$5,000); and a 16 mm Arriflex (\$3,500). Each camera is equipped with its own optical and magnetic recorders. Two Bolex hand-held cameras (\$500 each) plus \$1,500 worth of lights, carriers, cases, lenses, etc., round out the news-film department.

The cameras belong to U.S. Television Newsfilm Inc., an organization headed by KTLA commentator Clite Roberts (fourth from 1, above).

George Lewin (second from 1).

KTLA's news staff (1 to 7): Bruce Cohn, newswriter; Mr. Lewin; Julian MacDonald, associate producer; Mr. Roberts; Pat Michaels, commentator; "Tex" Zeigler, Ed Clarke and Russ Day, cameramen; Larry Scheer, Telecopter pilot-reporter; Harold Morby, Telecopter engineer-cameraman, and Jim Karayn, assistant news director. (Not pictured: Stan Chambers, announcer-newscaster, who stayed home to mind the newsroom and sportscaster Tom Harmon.)

**Newsbeats** • With its Telecopter

ficers for two m shooting a policemen market robbery, the Arechiga family fine, and the Laure

Is KTLA's aggression worthwhile? with an emphatic proudly to its awards. Another, impressive proof is that of \$14,000 (\$728,000 two half-hour, Mot day evening newscast) from day





... but KTLA shows you can't scrimp to make it



scene pictorial coverage, KTLA has nearly a half-million dollars invested in equipment. Among this array are four mobile ground units (1 to 4): station wagon "Prowl Car," with a camera chain, generator and transmitter (\$54,000); two remote trucks, each with two camera chains, switcher and transmitter (\$71,500 each); and a third remote van carrying four camera chains, switcher and transmitter (\$106,500).

**Flying High** • The world's only flying tv mobile unit, the KTLA Telecopter, is the result of three years

ground, includes a 16 mm Auricon Superpro movie camera (\$10,000); a 16 mm Auricon, adapted by Marland-Berlin (\$5,000); and a 16 mm Arriflex (\$3,500). Each camera is equipped with its own optical and magnetic recorders. Two Bolex hand-held cameras (\$500 each) plus \$1,500 worth of lights, carriers, cases, lenses, etc., round out the news-film department.

The cameras belong to U.S. Television Newsfilm Inc., an organization headed by KTLA commentator Clete Roberts (fourth from l. above).

George Lewin (second from l).

KTLA's news staff (l to r): Bruce Cohn, newswriter; Mr. Lewin; Julian MacDonald, associate producer; Mr. Roberts; Pat Michaels, commentator; "Tex" Zeigler, Ed Clarke and Russ Day, cameramen; Larry Scheer, Telecopter pilot-reporter; Harold Morby, Telecopter engineer-cameraman, and Jim Karayn, assistant news director. (Not pictured: Stan Chambers, announcer-newscaster, who stayed home to mind the newsroom and sportscaster Tom Harmon.)

**Newsbeats** • With its Telecopter

fiers for two men suspected of shooting a policeman during a supermarket robbery, the eviction of the Arechiga family from Chavez Ravine, and the Laurel Canyon fire.

Is KTLA's aggressive news operation worthwhile? KTLA answers with an emphatic "Yes" as it points proudly to its "Golden Mike" awards. Another, possibly more impressive proof is the weekly income of \$14,000 (\$728,000 annually) from two half-hour, Monday-through-Friday evening newscasts, plus the revenue from daytime and weekend









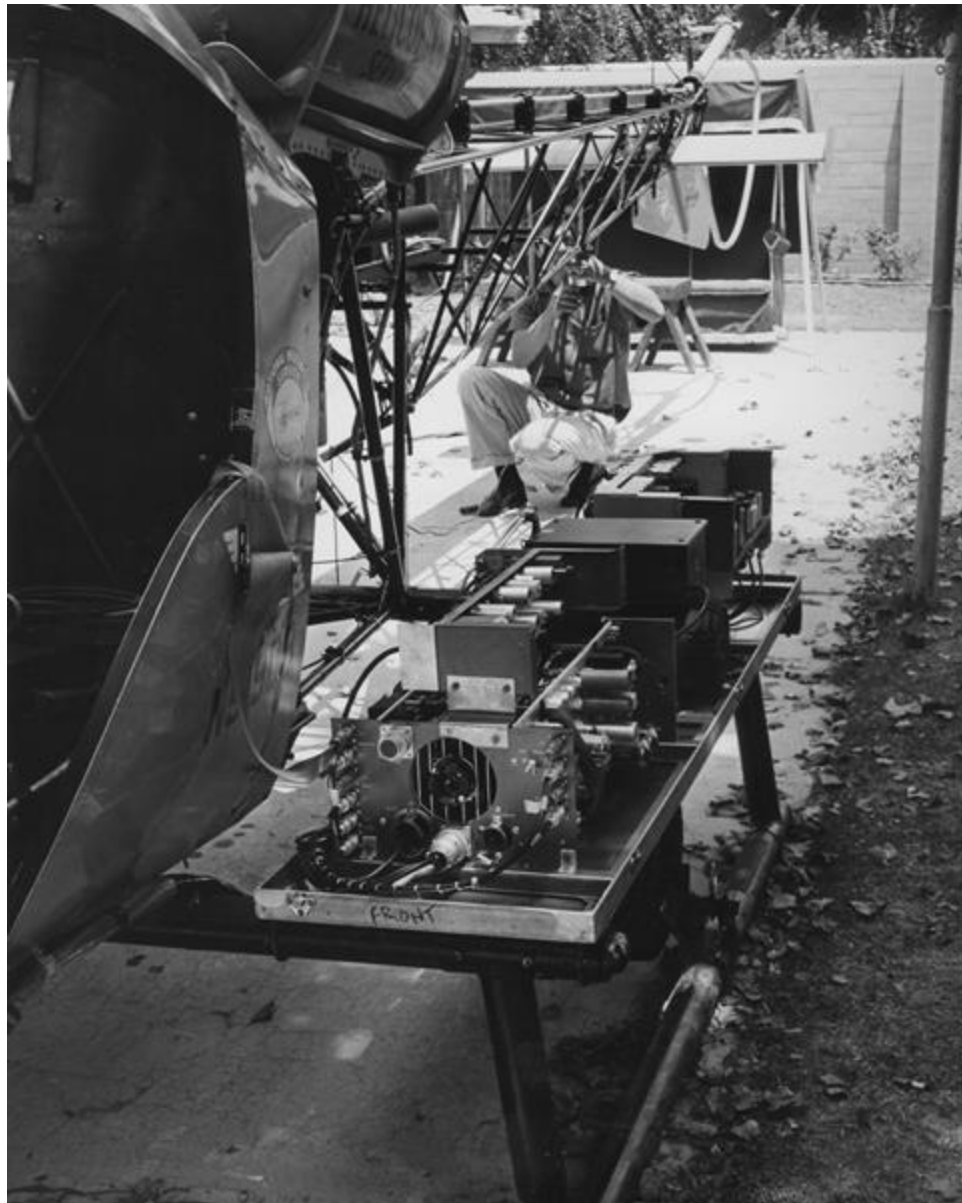
































Read what a magazine that knows television says about

There's money in newscasting... but KTLA shows you can't



What does it take to run a prize-winning, metropolitan area television news operation?

The picture above supplies the answer. Equipment worth \$443,500 and a \$175,000 a year news staff.

These are the basic ingredients that implement the aggressive news policy of KTLA (TV) Los Angeles—a station which walked off with two of the nine "Golden Mike" awards given this year by the Radio & Television News Club of Southern California.

In the judgement of California broadcast newsmen, KTLA not only performs the best news reporting job of any independent tv station but it is more aggressive in gathering the news than any tv station—network or independent—in the area.

To help its newsmen get on-the-

scene pictorial coverage, KTLA has nearly a half-million dollars invested in equipment. Among this array are four mobile ground units (1 to 4); station wagon "Prowl Car," with a camera chain, generator and transmitter (\$54,000); two remote trucks, each with two camera chains, switcher and transmitter (\$71,500 each); and a third remote van carrying four camera chains, switcher and transmitter (\$106,500).

**Flying High** • The world's only flying tv mobile unit, the KTLA Telecopter, is the result of three years experimentation by KTLA Chief Engineer John Silva and his staff. It carries a vidicon camera chain, transmitter and associated equipment, valued at \$119,000.

For news-film coverage, KTLA equipment, pictured in the fore-

ground, includes Superpro and a 16 mm Arriflex (33) equipped with magnetic tape hand-held camera \$1,500 worth cases, lenses, news-film and

The camera vision News-tion headed by Clete Roberts. Some of the KTLA are Roberts' group between the station provides that part of the KTLA supervision

Read what a magazine that knows television says at

There's money in newscasting... but KTLA shows you can't



What does it take to run a prize-winning, metropolitan area television news operation?

The picture above supplies the answer. Equipment worth \$443,500 and a \$175,000 a year news staff.

These are the basic ingredients that implement the aggressive news policy of KTLA (TV) Los Angeles—a station which walked off with two of the nine "Golden Mike" awards given this year by the Radio & Television News Club of Southern California.

In the judgement of California broadcast newsmen, KTLA not only performs the best news reporting job of any independent tv station but it is more aggressive in gathering the news than any tv station—network or independent—in the area.

To help its newsmen get on-the-

scene pictorial coverage, KTLA has nearly a half-million dollars invested in equipment. Among this array are four mobile ground units (l to r): station wagon "Prowl Car," with a camera chain, generator and transmitter (\$54,000); two remote trucks, each with two camera chains, switcher and transmitter (\$71,500 each); and a third remote van carrying four camera chains, switcher and transmitter (\$106,500).

**Flying High** • The world's only flying tv mobile unit, the KTLA Telecopter, is the result of three years experimentation by KTLA Chief Engineer John Silva and his staff. It carries a vidicon camera chain, transmitter and associated equipment, valued at \$119,000.

For news-film coverage, KTLA equipment, pictured in the fore-

ground, in Superper... a 16 mm... land-Berlin Arriflex (l... equipped... magnetic... hand-held... \$1,500... news-film...

The can... vision Ne... tion head... Clete Rob... Some of... KTLA an... Roberts' p... tween the... provides t... part of th... the supers...





Read what a magazine that knows television says about

There's money in newscasting... but KTLA shows you can't



What does it take to run a prize-winning, metropolitan area television news operation?

The picture above supplies the answer. Equipment worth \$443,500 and a \$175,000 a year news staff.

These are the basic ingredients that implement the aggressive news policy of KTLA (TV) Los Angeles—a station which walked off with two of the nine "Golden Mike" awards given this year by the Radio & Television News Club of Southern California.

In the judgement of California broadcast newsmen, KTLA not only performs the best news reporting job of any independent tv station but it is more aggressive in gathering the news than any tv station—network or independent—in the area.

To help its newsmen get on-the-

scene pictorial coverage, KTLA has nearly a half-million dollars invested in equipment. Among this array are four mobile ground units (l to r): station wagon "Prowl Car," with a camera chain, generator and transmitter (\$54,000); two remote trucks, each with two camera chains, switcher and transmitter (\$71,500 each); and a third remote van carrying four camera chains, switcher and transmitter (\$106,500).

**Flying High** • The world's only flying tv mobile unit, the KTLA Telecopter, is the result of three years experimentation by KTLA Chief Engineer John Silva and his staff. It carries a vidicon camera chain, transmitter and associated equipment, valued at \$119,000.

For news-film coverage, KTLA equipment, pictured in the fore-

ground, includes Superpro movie a 16 mm Auricon land-Berlin (\$5,000) Arriflex (\$3,500), equipped with its magnetic records hand-held cameras \$1,500 worth of cases, lenses, etc news-film department.

The cameras television Newfilm I tion headed by K Cleve Roberts (lous Some of the new KTLA are also Roberts' group. Ar tween the station as provides that these part of the KTLA, the supervision of











N8411E

AND LARRY SCHIFF

KTLA TELECOPTER CREW: HAROLD MORBY (LEFT) AND LARRY SCHEER

They'll Furnish the Herald-Express With Fast Picture Coverage of Important News Happenings in Southern California

## 'Copter to Photo for Herald

The HERALD-EXPRESS—in another move to constantly improve its editorial columns—announced today a tieup with television station KTLA for on-the-spot coverage from KTLA's successful TELECOPTER.

Always striving to maintain the same high-quality product, the HERALD-EXPRESS will bring top pictures faster to its readers from all parts of Southern California through its agreement with KTLA.

Combining the immediacy of a newspaper with the maneuverability and versatility of a helicopter, the HERALD-EXPRESS has joined with KTLA to get pictures of everything, everywhere, for immediate use.

Believing in the old Chinese adage that "one picture is worth 50,000 words," the HERALD-EXPRESS will continue to be the foremost picture paper in Los Angeles.

KTLA, an independent Los Angeles TV station owned by Paramount Pictures, has been a leader in direct on-the-spot TV coverage for many years. Its Telecopter was the world's first airborne television remote unit ever used.

### ADVANCED STEP

The television station took the advanced step by successfully converting a helicopter to a remote unit which is capable of direct transmission

of sound and pictures while in flight.

Larry Scheer, a one-time bush pilot in Canada and long-time broadcaster, is pilot-reporter of the Telecopter. His sidekick, Harold Morby, a veteran of 12 years on Channel 5, is engineer-cameraman.

It will be Morby, using camera equipment provided by the HERALD-EXPRESS, who will snap the news pictures that have made this newspaper one of the nation's greatest, with the largest evening circulation in the West.

Scheer is a native of Los Angeles and attended Hollywood High School. He has chalked up 3300 hours flying time in planes while in the U. S. Air Force and 3000 hours in helicopters.

### SPOT DISASTERS

Morby was trained as a radioman in the navy and joined KTLA in 1948, with the advent of television in Los Angeles.

Both men are strong boosters of the Telecopter for picture purposes.

"We can be on the spot of a disaster such as a plane or train crash or a mine explosion in a matter of minutes," Scheer said. "If something newsworthy happens anywhere in the Southland, we can be there, take the pictures and have it back in time for a HERALD-

EXPRESS edition within an hour or less."

The Telecopter has been used on such assignments as the Kathy Fiscus rescue attempt, three A-bomb telecasts from Las Vegas, the wreck of the El Capitan train here and many others.

### BETTER SERVICE

Officials of the HERALD-EXPRESS, in announcing the new working arrangement with KTLA, noted that it is incumbent upon a newspaper to constantly strive to serve the people of the community.

It is the HERALD-EXPRESS' belief that use of the TELECOPTER will enable the newspaper to present the most efficient and dramatic on-the-spot picture coverage available.

In brief, the HERALD-EXPRESS will continue to be the FIRST with the LATEST and the BEST.

CENT  
ay a

A CLOSER LOOK

# KTLA Telecopter Provided Top Coverage of LA Riots

By ERNIE KREHLING  
Tribune Television Writer

Although their faces were always out of camera range, names of Larry Scheer and Harold Morley were probably the most frequently heard names during the South Los Angeles riot days.

With the same mastery of TV that is used in KTLA, Channel 5, during this period we all heard their names every time the station cut to the camera-equipped helicopter for air views of the riot.



KREHLING

Thus appreciation of their work comes when we realize that Larry Scheer, the pilot-out-crier, not only flies the plane at low altitudes, but watches the ground and reports what he sees. He also keeps one eye on the camera's monitor and one on the all-the-air receiver near it. Two radio channels, often carrying up to eight voices at a time, are constantly running over his earphones with instructions, suggestions and orders.

Camerasman Hal Morley holds the 14-pound Japanese Canon camera against his shoulder as he leans out of the copter instinctively following Scheer's narration.

Hours In Air  
Considering the hours these two men spent in the air and on the air, no responsible observer can seriously fault their performance. This is viewed

thought the narration was intelligent, literate, non-explicit and subdued. The only serious complaints have come from sources so predictably negative in their approach to television that they must be ignored as only the whining, nagging and sneering for which the sources have become infamous.

Channel 5 is an independent station owned by Gene Aubry. He also owns radio station KMPC, which has two helicopter and two fixed-wing planes used extensively during the riots.

Other Los Angeles stations were totally without resources when it comes to reporting civil strife, fires and looting. KTLA, Channel 5, made a brave effort but lacking a helicopter its efforts were futile. Most other stations, especially the network stations, were singularly uncoordinated and virtually ignored the situation.

Almost 14 hours KTLA was on the air for almost 14 hours, during which time station manager Arthur Mortenson authorized the pre-emption of all programs and commercials necessary to insure good coverage. In summary all or part of 14 programs were taken over, in addition to 11 commercials with a value of at least \$2,000.

Although other helicopters and air craft were in the air over the trouble areas none had a television camera and so were unable to zoom in the ground for the close-up views possible by Scheer and Morley's teamwork and equipment. Consequently the Police Communications Center was tuned to KTLA, continually and picked up dozens of messages and much valuable information. Fire Department equipment and troops were deployed directly on the basis of the KTLA reports from the air.

As for sniper fire, Larry Scheer says they often saw gun flashes, and had reason to assume they were directed at the low flying plane. Almost every time there was a flash it seemed to come from a certain area

board began to respond on the third and fourth day, almost certainly program manager Lucien d'Usson feels, as an organized campaign.

"To my knowledge and recollection," says Scheer, "I didn't use the word 'Nigger' one time during the coverage. The phrase Charcoal Alley had absolutely no connection with the fact some of the people involved were Negroes."

In Three Networks

KTLA's coverage was provided nationally at cost to the three national networks and dozens of local stations. As with the Baldwin Hills dam break and the Bel Air fire a few years ago only KTLA's telecopter could provide viewers everywhere coverage. A craft like this costs about \$20,000 to purchase and \$300 an hour to operate. Its maintenance is a major cost to a local station to support between major tragedies, although it is now being widely used for the station's 4:30 and 10 p.m. news programs.



and cameraman-engineer Harold Morley's camera can show its individual.

## ases ders

From "Windig": "3 k 10-10" the show that started it all, ticks on with another first by introducing singer J. P. Morley to interviewers . . . 3:30 national TV debut Morley sings "Don't Cry No More," "Be Diddy" and the P. J. Proby song, "Get Your Monkey Do The Dog!"

No comment.



**HOLLYWOOD BOWL**
  
 Thru Sept. 4th
   
 YOURS TO ENJOY
   
 TOMORROW AT 8:30
   
**Gay Nineties Night**
  
 starring BETTY HUTTON
   
 The Screen Actors Guild and Company of 200
   
 AUG. 24 at 8:30
   
 STEVE BRUDA, Conductor
   
 JOHN SCHONBERG, Flute
   
 AUG. 26 at 8:30
   
 STEVE BRUDA, Conductor

# TV Veterans Shift Into New Settings

By CYNTHIA LORRY.  
**HOLLYWOOD (AP)** — The networks' fall schedules list 23 shining new vehicles in their evening schedules, but the fact is that three will really be 36 in the 195-66 line.  
 Three old series shows are undergoing such radical body remodeling that if it were not for the presence of the stars, they might be hard to recognize.  
 "The Lucy Show" will move its locale to Hollywood, lose its "family" background and start using guest stars ranging from a team of trained dolphins to Danny Thomas.

**Hazel Trades Jobs**  
 "Hazel" transfers to the employ of a young couple with a real estate business which, the producers fondly hope, will give the long-playing comedy series all sorts of new situations to work with.

And when Amos Burke, last of "Burke's Law," becomes "Amos Burke, Secret Agent,"

**'Journey Into Fear' To Become TV Series**

Eric Ambler, a contemporary writer of suspense and international intrigue novels, and his wife, Joan Harrison, who produced most of Alfred Hitchcock's television shows, will write and produce a series for next season based for one of Ambler's best books, "Journey Into Fear."

Just about the only two points of recognition will be star Gene Barry and that luxury limousine, which he will be driving himself for a change.

Replacement of parts on the Lucille Ball vehicle was dictated by the loss of a vital star, Vivian Vance.

**Need Change**  
 In order to give the series continuity, the season's first show will have Lucy's divorcee housemate marrying and moving away with her young son. At the same time, Lucy's trifevish daughter will enter a California college and, to be near her, the redhead moves West and puts her son in a military school.

"Hazel's" new situation was dictated, according to producer James Fonda, quite simply by attrition.

Hazel's old George Baxter family will be conveniently shipped off to the Middle East, while she shifts to the household of her employer's younger brother and his wife.

Amos Burke will be quitting the Police Department for the Secret Service, its producers alleged, because the character

has been so uninterestingly long-in-the-tooth for two years.

The first show of the season will explain his transition, it is felt.



**HELICOPTER COVERAGE** — Pilot-announcer Larry Schorr, right, Morby help keep TV watchers up to date on LA riot situation.

## Sometimes Press Releases Just Confuse the Reader

By RICK DU BROW  
**HOLLYWOOD (UPI)** — We read the network press releases.  
 —From "The Beverly Hills Cop": "If Donna Douglas sometimes wonders whether she's really Donna Douglas or Ely May Clampett, it's no surprise."  
 No, probably not.  
 —From NBC-TV: "Producers big disadvantage in playing practical jokes," says Art Linkletter. "People like to see if I can take it as well as dish it out."  
 And some people don't care at all.  
 —From "Password": "For other people Password is sheer entertainment. For Allen Ludden, moderator of the word association game... it's a way of life."

who made a fortunate mistake. The city of Boston was actually founded because of an error.  
 The early 13th century settlers believed that the Charles River was a good inland water route. So they found out that it wasn't, but then stayed anyway. In 1630 John Harvard made official.  
 So THAT's what happened!



## TV Today

- 5:00 P.M.**  
 (1) SHERANG (CBS)  
 (2) THE MEN'S ROOM  
 (3) LAUREL AND HARDY  
 (4) BILLY BAKTY

- 8:00 P.M.**  
 (1) OUR PRIVATE WORLD  
 (2) VALENTINE'S DAY  
 (3) MUSEUM MOVIES





# KTLA PRESS INFORMATION



LOYD SIGMON (L), EXECUTIVE VICE PRESIDENT AND GENERAL MANAGER OF GOLDEN WEST BROADCASTERS, INFORMS KTLA TELECOPTER CAMERAMAN-ENGINEER HAROLD MORBY (CENTER) AND PILOT-ANNOUNCER LARRY SCHEER THAT THE STATION'S NEWS COVERAGE OF THE WATTS RIOTS HAS WON THE GEORGE FOSTER PEABODY AWARD FOR EXCELLENCE. THE SMALL TELEVISION CAMERA, HELD BY SIGMON, CAN FILL A TELEVISION SCREEN WITH A PERSON'S IMAGE OR REVEAL THE ENTIRE LOS ANGELES BASIN FROM THE TELECOPTER FLIGHT ALTITUDE OF 1,000 FEET. THE FLYING TELEVISION STATION WAS USED EXTENSIVELY IN REPORTING THE RIOT NEWS WHEN TERRORISTS PREVENTED GROUND UNITS FROM GETTING INTO THE WATTS AREA.

5800 SUNSET BOULEVARD • LOS ANGELES, CALIFORNIA 90028 • HO 9-3181  
CWBS GOLDEN WEST BROADCASTERS • KMPC LOS ANGELES • KSFQ SAN FRANCISCO • KEX PORTLAND • KVI SEATTLE

# KTLA PRESS INFORMATION



AWARD WINNING RIOT COVERAGE







GENERAL  ELECTRIC  
COMPANY

INDUSTRIAL ELECTRONICS DIVISION

232 NO. LAKE AVENUE, SUITE 210, PASADENA, CALIFORNIA • TELEPHONE STYCAMORE 2-1209

July 24, 1958

Mr. James R. Schulke, General Manager  
Paramount TV Productions, Inc.  
5800 Sunset Blvd.  
Hollywood, California

Dear Mr. Schulke:

On behalf of the General Electric Company, may I extend our heartiest congratulations to you and your staff on the occasion of your airborne television remote unit debut. It is an honor and a sincere pleasure for our company to have had the opportunity to work with your Chief Engineer Mr. John Silva in this endeavor.

Your new airborne television facility, the "HELICOPTER", is exemplar of KTLA's effort for ever increasing public service which has been exhibited so well in the past.

We are naturally proud of the fact that our camera, microwave, and particularly our helical antenna has helped to make this event possible. The G.E. helical antenna already enjoys an enviable reputation in all commercial television broadcast use from low channel VHF to high channel UHF. It now adds another area of service to its successful history.

We wish you and your company continued success in your new service which is progress in a most important form.

Very sincerely yours,



P.L. Chamberlain  
Manager, Marketing  
Broadcast Equipment

mk







BOB GILBREATH - Vice-president of National Helicopter Service and  
Engineering Co., and pilot of KTLA's TELECOPTER.































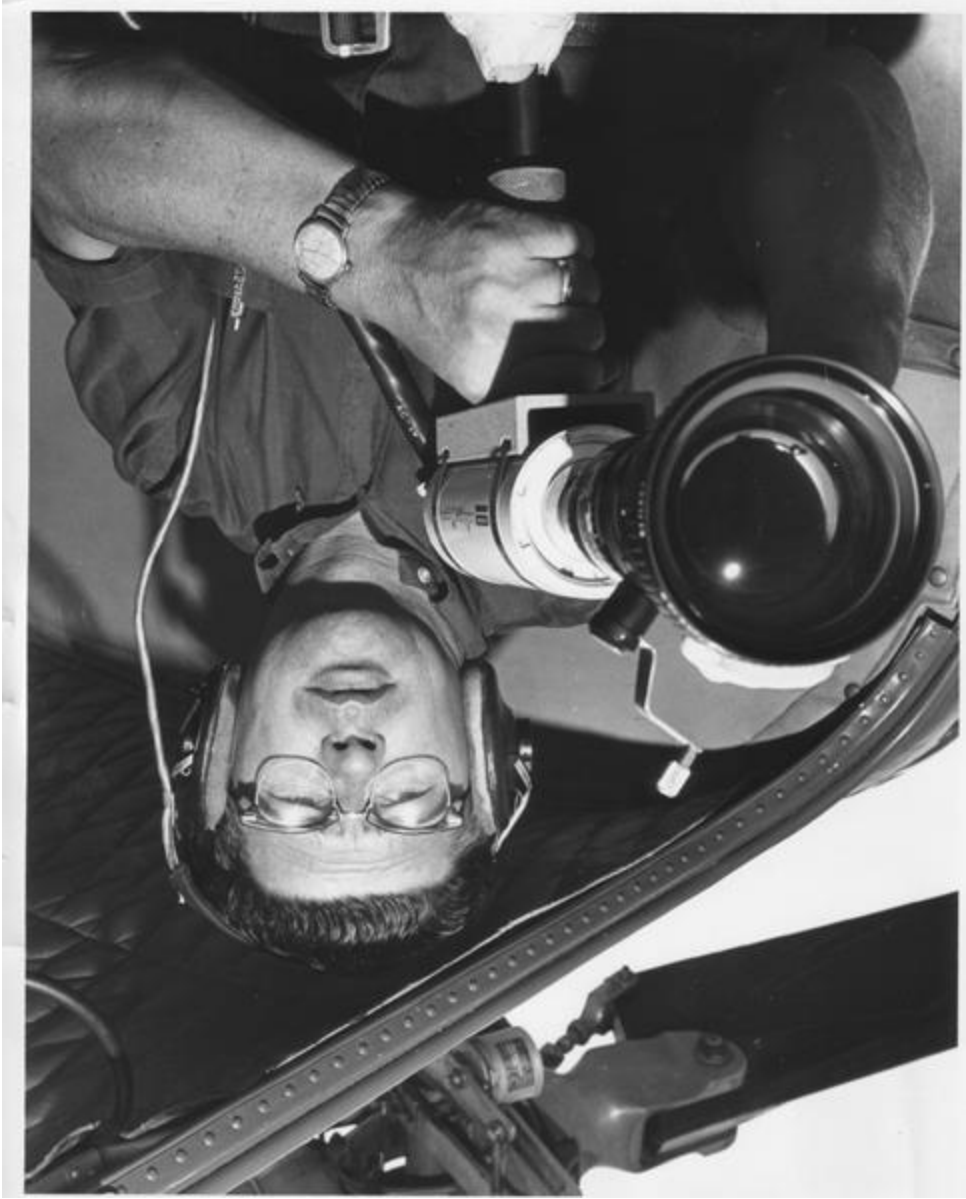




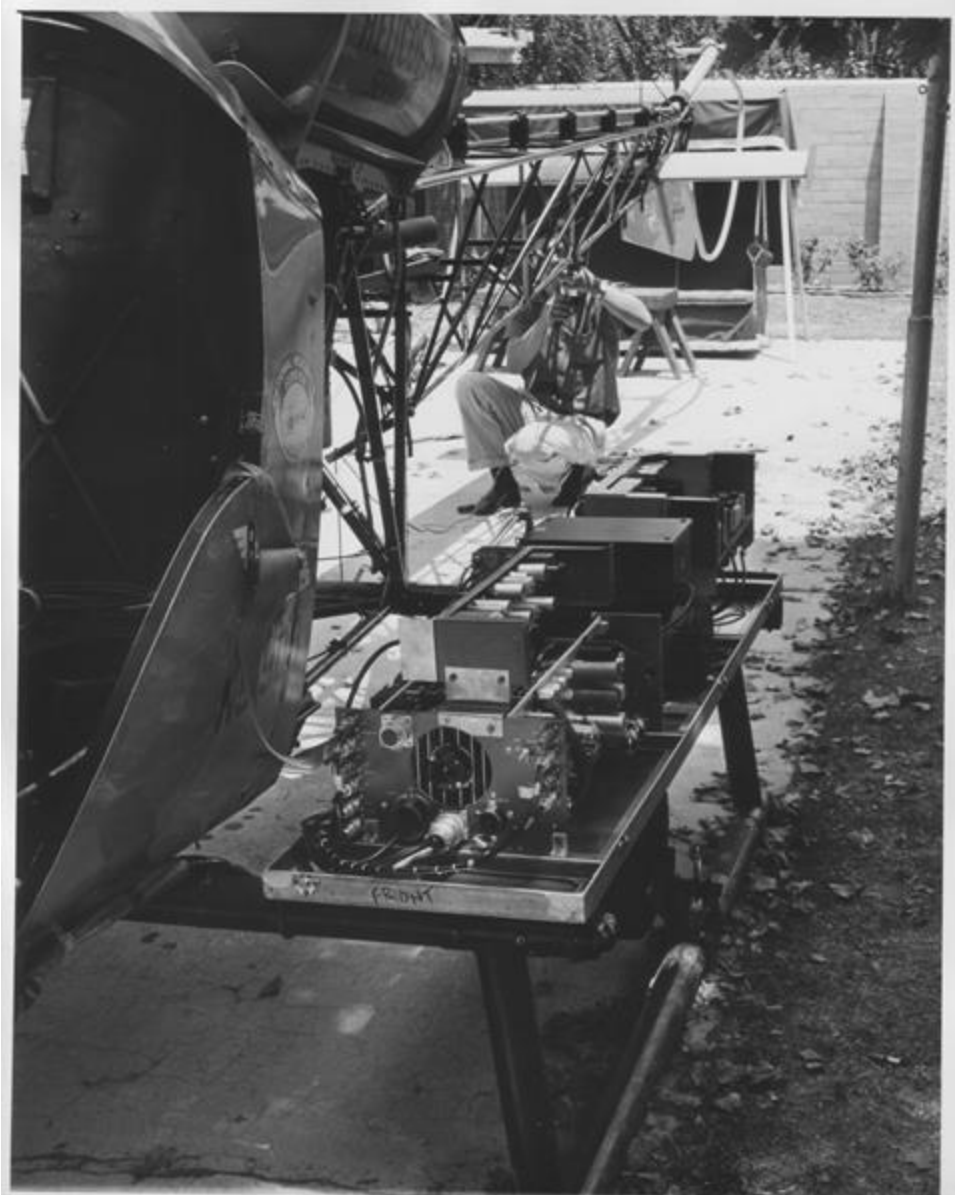












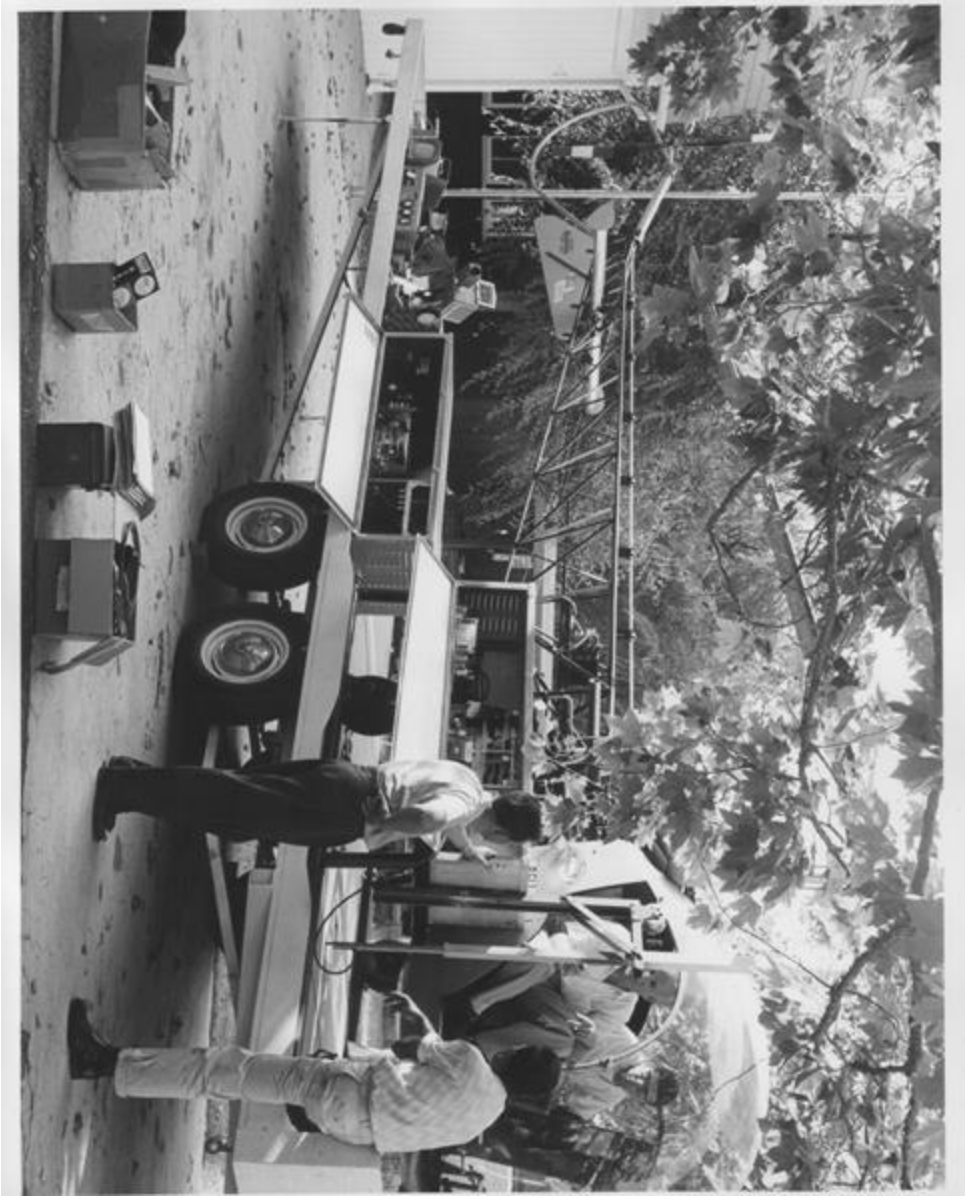




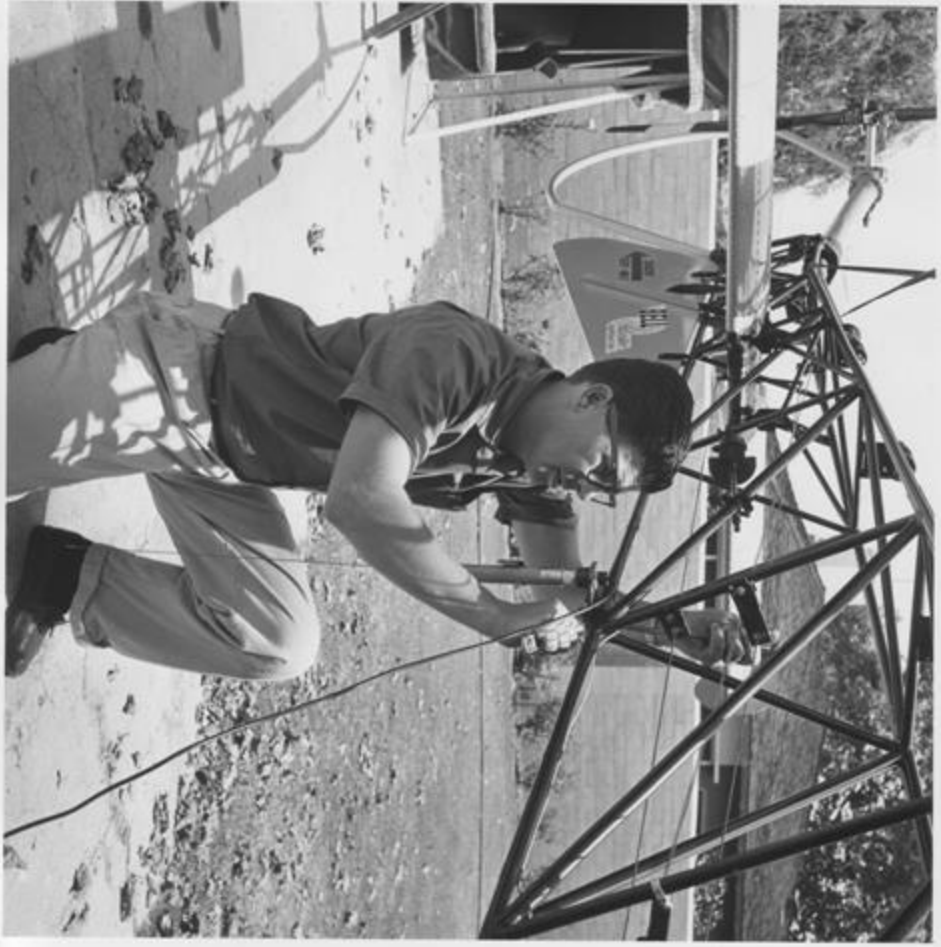














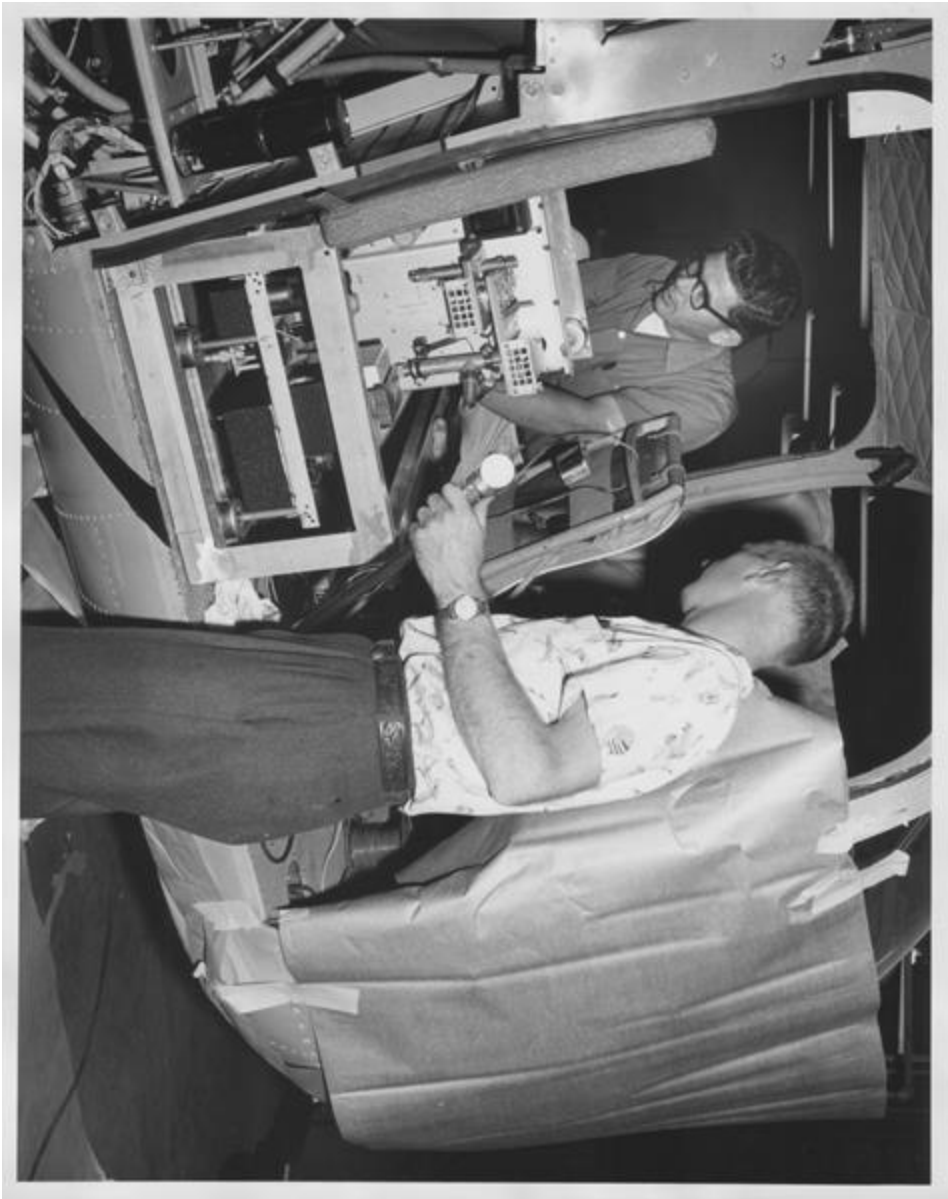
















Courtesy of Don Kent