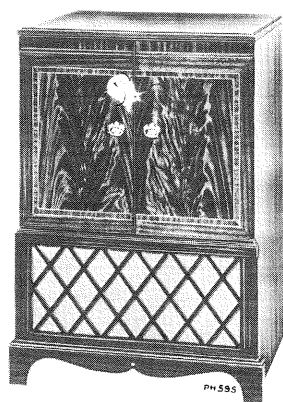
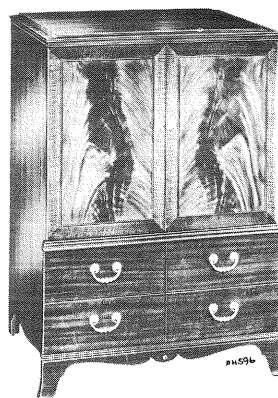


Model 9T57
"York"
Mahogany,
Walnut
or Oak



Model 9T77
"Hillsdale"
Walnut, Mahogany
or Oak



Model 9T79
"Northampton"
Walnut, Mahogany
or Oak



RCA VICTOR

TELEVISION RECEIVERS MODELS 9T57, 9T77, 9T79

Chassis Nos. KCS49, KCS49T, KCS49A or KCS49AT

— Mfr. No. 274 —

SERVICE DATA

— 1950 No. T16 —

PREPARED BY RCA SERVICE CO., INC.
FOR

RADIO CORPORATION OF AMERICA

RCA VICTOR DIVISION

CAMDEN, N. J., U. S. A.

GENERAL DESCRIPTION

Model 9T57, 9T77 and 9T79 receivers are deluxe "19 inch" television receivers. The receivers are identical except for cabinets, jewel lights and speakers.

Features of the television unit are: full twelve channel coverage; FM sound system; improved picture brilliance; picture A-G-C; A-F-C horizontal hold; stabilized vertical hold; two stages of video amplification; noise saturation circuits; improved sync separator and clipper; four mc. band width for picture channel and reduced hazard high voltage supply. An auxiliary audio input jack is provided to permit the use of an external record playing attachment.

ELECTRICAL AND MECHANICAL SPECIFICATIONS

PICTURE SIZE204 square inches on a 19AP4A Kinescope

TELEVISION R-F FREQUENCY RANGE

All 12 television channels, 54 mc. to 88 mc., 174 mc. to 216 mc.
Fine Tuning Range... ± 250 kc. on chan. 2, ± 650 kc. on chan. 13
Picture Carrier Frequency25.50 mc.
Sound Carrier Frequency21.00 mc.

VIDEO RESPONSETo 4 mc.

SWEEP DEFLECTIONMagnetic

FOCUSMagnetic

POWER SUPPLY RATING115 volts, 60 cycles, 205 watts

AUDIO POWER OUTPUT RATING3.5 watts max.

CHASSIS DESIGNATIONS

KCS49 or KCS49T In Model 9T57
KCS49A or KCS49AT In Models 9T77 and 9T79

LOUDSPEAKERS

KCS49(92580-4) 8" PM Dynamic, 3.2 ohms
KCS49A(92569-11) 12" PM Dynamic, 3.2 ohms

DIMENSIONS (inches)	Width	Height	Depth
Cabinet (outside), 9T57	24 1/4	23 1/4	25
Cabinet (outside), 9T77	29	40 1/4	26 1/4
Cabinet (outside), 9T79	30 1/4	40	26 1/4

WEIGHT	Chassis with Tubes in Cabinet	Shipping Weight
Model		
9T57	127	154
9T77	135	159
9T79	136	164

RECEIVER ANTENNA INPUT IMPEDANCE

Choice: 300 ohms balanced or 72 ohms unbalanced.

RCA TUBE COMPLEMENT

Tube Used	Function
(1) RCA 6CB6	R-F Amplifier
(2) RCA 6J6	R-F Oscillator and Mixer
(3) RCA 6AU6	1st Sound I-F Amplifier
(4) RCA 6AU6	2nd Sound I-F Amplifier
(5) RCA 6AL5	Sound Discriminator
(6) RCA 6AV6	1st Audio Amplifier
(7) RCA 6K6GT	Audio Output
(8) RCA 6AU6	1st Picture I-F Amplifier
(9) RCA 6CB6	2nd Picture I-F Amplifier
(10) RCA 6AU6	3rd Picture I-F Amplifier
(11) RCA 6CB6	4th Picture I-F Amplifier
(12) RCA 6AL5	Picture 2nd Detector and AGC Detector
(13) RCA 12AU7	1st and 2nd Video Amplifier
(14) RCA 12AU7	DC Restorer and Sync Separator
(15) RCA 6J5	Vertical Sweep Oscillator
or RCA 6SN7GT	Sync Separator and Vertical Sweep Oscillator
(16) RCA 6K6GT	Vertical Sweep Output
(17) RCA 6SN7GT	Horizontal Sweep Oscillator and Control
(18) RCA 6BG6G	Horizontal Sweep Output
(19) RCA 6W4GT	Damper
(20) RCA 1B3-GT/8016	High Voltage Rectifier
(21) RCA 19AP4A	Kinescope
(22) RCA 5U4G	Rectifier

9T57, 9T77, 9T79

ELECTRICAL AND MECHANICAL SPECIFICATIONS (Continued)

PICTURE INTERMEDIATE FREQUENCIES

Picture Carrier Frequency	25.50 Mc.
Adjacent Channel Sound Trap	27.00 Mc.
Accompanying Sound Traps	21.00 Mc.
Adjacent Channel Picture Carrier Trap	19.50 Mc.

SOUND INTERMEDIATE FREQUENCIES

Sound Carrier Frequency	21.00 Mc.
Sound Discriminator Band Width between peaks	400 kc

VIDEO RESPONSE	To 4 Mc.
FOCUS	Magnetic
SWEEP DEFLECTION	Magnetic
SCANNING	Interlaced, 525 line
HORIZONTAL SWEEP FREQUENCY	15,750 cps
VERTICAL SWEEP FREQUENCY	60 cps
FRAME FREQUENCY (Picture Repetition Rate)	30 cps

OPERATING INSTRUCTIONS

The following adjustments are necessary when turning the receiver on for the first time:

1. See that the TV-PH switch on the rear apron is in the "TV" position.
2. Turn the receiver "ON" and advance the SOUND VOLUME control to approximately mid-position.
3. Set the STATION SELECTOR to the desired channel.
4. Adjust the FINE TUNING control for best sound fidelity and the SOUND VOLUME control for suitable volume.
5. Turn the BRIGHTNESS control fully counter-clockwise, then clockwise until a light pattern appears on the screen.
6. Adjust the VERTICAL hold control until the pattern stops vertical movement.
7. Adjust the HORIZONTAL hold control until a picture is obtained and centered.
8. Adjust the PICTURE and BRIGHTNESS controls for suitable picture contrast and brightness.

9. After the receiver has been on for some time, it may be necessary to readjust the FINE TUNING control slightly for improved sound fidelity.

10. In switching from one channel to another, it may be necessary to repeat steps 4 and 8.

11. When the set is turned on again after an idle period it should not be necessary to repeat the adjustments if the positions of the controls have not been changed. If any adjustment is necessary, step number 4 is generally sufficient.

12. If the positions of the controls have been changed, it may be necessary to repeat steps 2 through 8.

13. To use a record player, plug the record player output cable into the PHONO jack on the rear apron, and set the TV-PH switch to "PH."

14. On console type receivers, to turn on station escutcheon light, pull out on picture control knob, and push in to turn off.

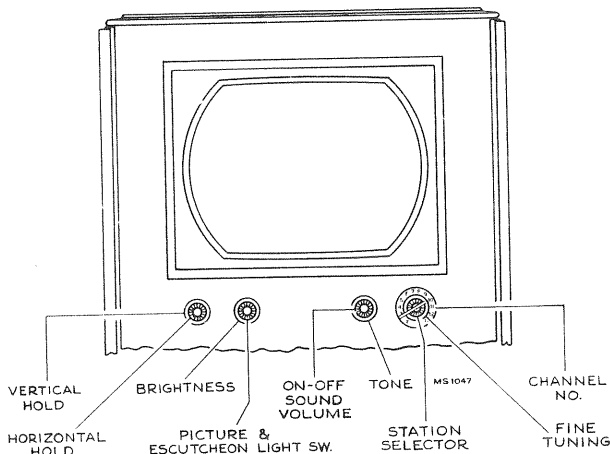


Figure 1—Receiver Operating Controls

THE CHASSIS USED IN MODELS 9T57, 9T77 AND 9T79 IS VERY SIMILAR TO THE CHASSIS USED IN MODELS 6T53, 6T64, 6T71, ETC. REFER TO PAGES 368 TO 385 FOR INSTALLATION INSTRUCTIONS, ALIGNMENT DATA AND WAVE FORM PHOTOGRAPHS.

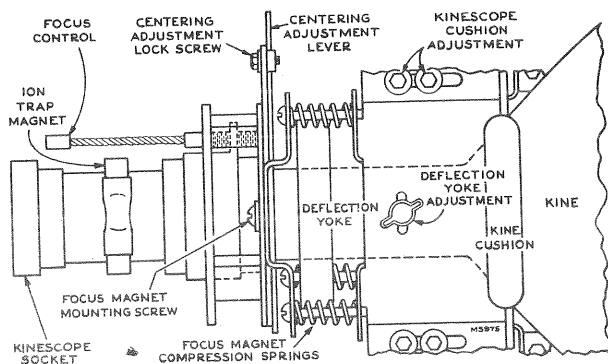


Figure 2—Yoke and Focus Magnet Adjustments

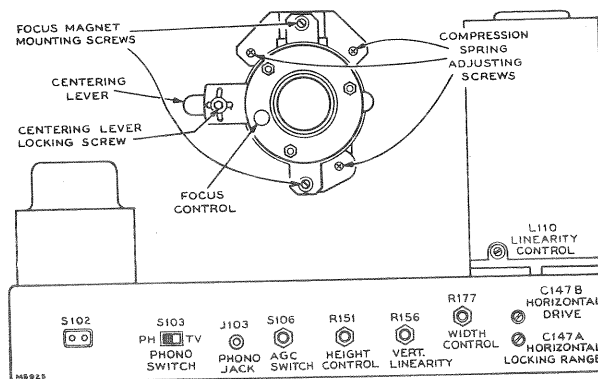


Figure 3—Rear Chassis Adjustments

CHASSIS TOP VIEW

9T57, 9T77, 9T79

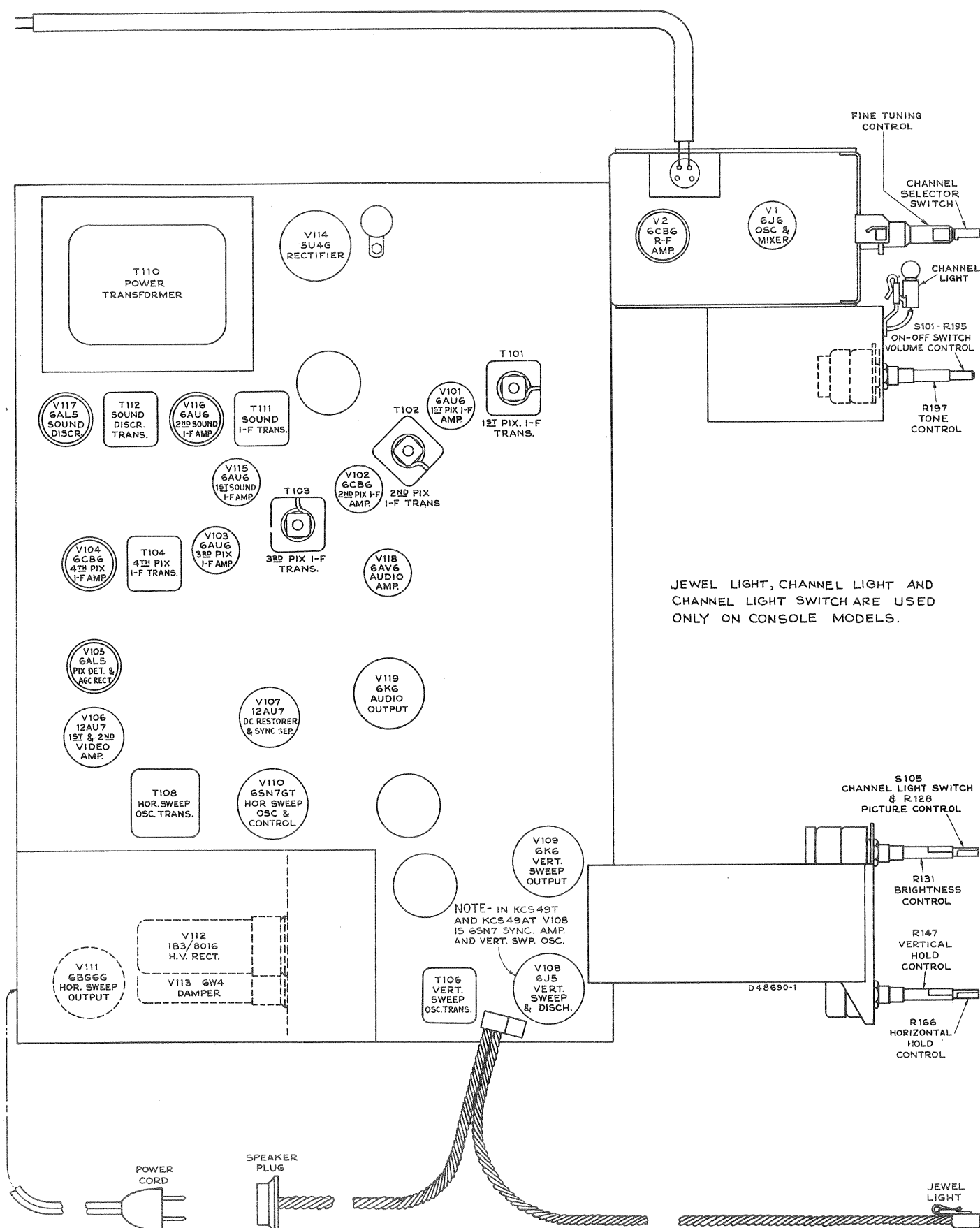


Figure 4—Chassis Top View

9T57, 9T77, 9T79

VOLTAGE CHART

The following measurements represent two sets of conditions. In the first condition, a 2500 microvolt test pattern signal was fed into the receiver, the picture synced and the AGC control properly adjusted. The second condition was obtained by removing the antenna leads and short circuiting the receiver antenna terminals. Voltages shown are read with a type WV79A senior "VoltOhmyst" between the indicated terminal and chassis ground and with the receiver operating on 117 volts, 60 cycles, a-c. The symbol < means less than.

Tube No.	Tube Type	Function	Operating Condition	E. Plate		E. Screen		E. Cathode		E. Grid		I Plate (ma.)	I Screen (ma.)	Notes on Measurements
				Pin No.	Volts	Pin No.	Volts	Pin No.	Volts	Pin No.	Volts			
V1	6J6	Mixer	2500 Mu. V. Signal	2	144	—	—	7	0	5	-2.3	6.6	—	
			No Signal	2	135	—	—	7	0	5	-2.1	5.6	—	
V1	6J6	R-F Oscillator	2500 Mu. V. Signal	1	100	—	—	7	0	6	*-3.0	4.0	—	*Depending upon channel
			No Signal	1	96	—	—	7	0	6	*-2.7	3.9	—	
V2	6AG5	R-F Amplifier	2500 Mu. V. Signal	5	250	6	130	2	<0.1	1	-3.4	3.0	0.6	
			No Signal	5	166	6	84	2	0.4	1	-0.2	10.3	2.3	
V101	6AU6	1st Pix. I-F Amplifier	2500 Mu. V. Signal	5	195	6	222	7	0.3	1	-5.0	1.7	0.8	
			No Signal	5	121	6	135	7	0.8	1	-0.8	5.2	2.2	
V102	6CB6	2nd Pix. I-F Amplifier	2500 Mu. V. Signal	5	222	6	203	2	0.3	1	-5.0	2.0	0.7	
			No Signal	5	124	6	112	2	0.8	1	-0.8	5.5	1.6	
V103	6AU6	3d Pix. I-F Amplifier	2500 Mu. V. Signal	5	185	6	225	7	0.2	1	-5.0	1.7	0.7	
			No Signal	5	94	6	132	7	0.5	1	-0.75	4.9	2.0	
V104	6CB6	4th Pix. I-F Amplifier	2500 Mu. V. Signal	5	165	6	142	2	2.25	1	0	9.6	3.1	
			No Signal	5	118	6	132	2	2.1	1	0	9.0	3.1	
V105	6AL5	Picture 2d Det.	2500 Mu. V. Signal	7	-2.0	—	—	1	0	—	—	0.3	—	
			No Signal	7	-0.5	—	—	1	0	—	—	<0.1	—	
V105	6AL5	AGC Rectifier	2500 Mu. V. Signal	2	-9.5	—	—	5	0	—	—	<0.1	—	
			No Signal	2	-2.0	—	—	5	0	—	—	<0.1	—	
V106	12AU7	1st Video Amplifier	2500 Mu. V. Signal	1	100	—	—	3	1.2	2	-2.3	3.6	—	At maximum contrast
			No Signal	1	54	—	—	3	0.9	2	-0.5	2.6	—	
			2500 Mu. V. Signal	1	190	—	—	3	9.0	2	-2.6	0.9	—	At minimum contrast
			No Signal	1	122	—	—	3	6.9	2	-0.5	0.6	—	
V106	12AU7	2d Video Amplifier	2500 Mu. V. Signal	6	330	—	—	8	125	7	118	9.3	—	At maximum contrast
			No Signal	6	295	—	—	8	121	7	110	13.6	—	
			2500 Mu. V. Signal	6	300	—	—	8	131	7	120	12.9	—	At minimum contrast
			No Signal	6	295	—	—	8	121	7	110	13.6	—	
V107 A	12AU7 KCS49	D-C Rest. & Sync Sep.	2500 Mu. V. Signal	1	5.0	—	—	3	45.5	2	-4.7	<0.1	—	At maximum contrast
	KCS49		No Signal	1	5.5	—	—	3	8.5	2	-0.7	<0.1	—	
V107 B	12AU7 KCS49	Sync Sep. & Amplifier	2500 Mu. V. Signal	6	36	—	—	8	6.0	7	4.7	4.0	—	
	KCS49		No Signal	6	36	—	—	8	6.0	7	5.5	2.8	—	

VOLTAGE CHART

9T57, 9T77, 9T79

Tube No.	Tube Type	Function	Operating Condition	E. Plate		E. Screen		E. Cathode		E. Grid		I Plate (ma.)	I Screen (ma.)	Notes on Measurements
				Pin No.	Volts	Pin No.	Volts	Pin No.	Volts	Pin No.	Volts			
V107	12AU7 KCS49T	DC Rest Sync Sep.	2500 Mu. V. Signal	1	10	—	—	3	45	2	-4.5	—	—	At maximum contrast
	KCS49T		No Signal	1	8	—	—	3	1.7	2	-0.4	—	—	
	KCS49T		2500 Mu. V. Signal	6	7.2	—	—	8	54	7	0	—	—	
	KCS49T		No Signal	6	7.0	—	—	8		7	0	—	—	
V108A	6SN7 GT	Sync Amplifier	2500 Mu. V. Signal	5	50	—	—	6	7.8	4	7.4	—	—	
	KCS49T		No Signal	5	46	—	—	6	7.0	4	7.0	—	—	
V108	6SN7 or 6J5	Vertical Oscillator	2500 Mu. V. Signal	2 or 3	*395	—	—	3 or 8	0	1 or 5	*-58	0.4	—	*Depends on Setting of height control
			No Signal	2 or 3	*395	—	—	3 or 8	0	1 or 5	*-58	0.4	—	
V109	6K6GT	Vertical Output	250 Mu. V. Signal	3	370	4	370	8	51	5	0	11.5	1.9	
			No Signal	3	365	4	365	8	51	5	0	11.4	1.9	
V110	6SN7 GT	Horizontal Osc. Control	2500 Mu. V. Signal	2	*160	—	—	3	*-4.6	1	*-14.6	0.32	—	*Depends on Setting of hold control
			No Signal	2	*152	—	—	3	*-4.4	1	*-3.5	0.28	—	
V110	6SN7 GT	Horizontal Oscillator	2500 Mu. V. Signal	5	230	—	—	6	0	4	-82	1.8	—	
			No Signal	5	225	—	—	6	0	4	-85	1.8	—	
V111	6BG6G	Horizontal Output	2500 Mu. V. Signal	5	*630	8	335	3	7.2	5	-33	67	5.0	*6000 volt pulse present
			No Signal	5	*630	8	329	3	7.2	5	-33	67.1	4.9	
V112	1B3GT /8016	H. V. Rectifier	Brightness Min.	Cap	*	—	—	2 & 7	*14500	—	—	0	—	*14500 volt pulse present
			Brightness Maximum	Cap	*	—	—	2 & 7	*12700	—	—	0.1	—	
V113	6W4 GT	Damper	2500 Mu. V. Signal	5	387	—	—	3	*391	—	—	69	—	*3000 volt pulse present
			No Signal	5	380	—	—	3	*387	—	—	70	—	
V114	5U4G	Rectifier	2500 Mu. V. Signal	4 & 6	*368	—	—	2 & 8	391	—	—	185	—	*AC measured with AC Voltmeter
			No Signal	4 & 6	*367	—	—	2 & 8	387	—	—	199	—	
V115	6AU6	1st Sound I-F Amp.	2500 Mu. V. Signal	5	120	6	120	7	0.8	1	-0.2	6.8	*2.9	
			No Signal	5	108	6	108	7	0.8	1	-0.1	6.2	2.8	
V116	6AU6	2d Sound I-F Amp.	2500 Mu. V. Signal	5	118	6	87	7	0	1	-1.3	4.9	2.8	
			No Signal	5	110	6	76	7	0	1	-0.5	6.9	3.1	
V117	6AL5	Sound Discrim.	2500 Mu. V. Signal	2	-7.2	—	—	5	0	—	—	<0.1	—	
			No Signal	2	-10.0	—	—	5	0	—	—	<0.1	—	
V118	6AV6	1st Audio Amplifier	2500 Mu. V. Signal	7	95	—	—	2	0	1	-0.5	0.5	—	
			No Signal	7	84	—	—	2	0	1	-0.4	0.4	—	
V119	6K6GT	Audio Output	2500 Mu. V. Signal	3	352	4	368	8	131	5	112	28.7	4.3	
			No Signal	3	348	4	360	8	134	5	108	28.8	4.2	
V120	19AP4	Kinescope	2500 Mu. V. Signal	Cone	14,000	10	384	11	100	2	46	<0.1	<0.1	
			No Signal	Cone	13,500	10	375	11	74	2	8.3	<0.1	<0.1	

9T57, 9T77, 9T79

R-F UNIT WIRING DIAGRAM

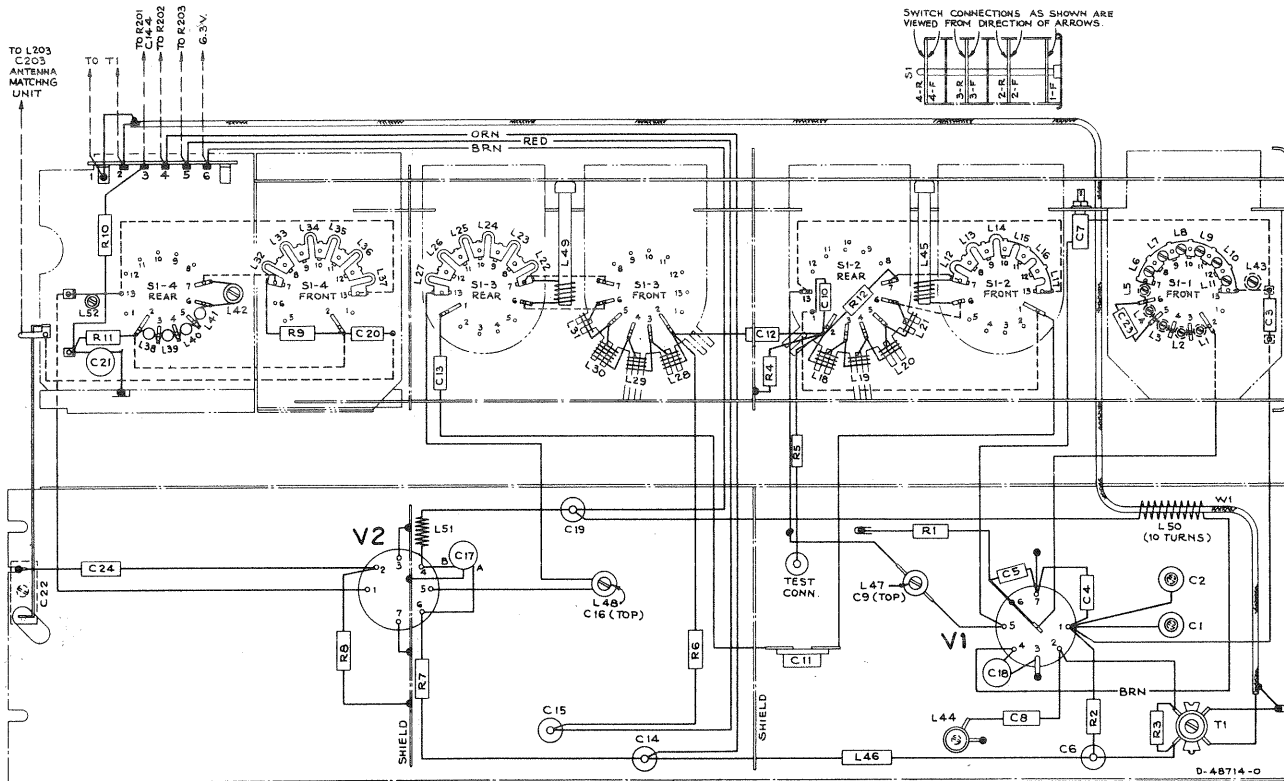


Figure 5—R-F Unit Wiring Diagram

CRITICAL LEAD DRESS:

1. All leads in the picture and sound i-f circuits must be dressed as short and direct as possible with the exception of C106, C107, C110 and C117 which are to be dressed with enough slack so as not to have to move the body of the capacitor to align that particular stage.
2. Dress all 1500 mmf .005 mfd and .01 mfd capacitors in the i-f section with leads as short as possible.
3. Dress all wires between T101 and the r-f unit in clamp.
4. Dress C185 to act as shield for lead between pin 5 of V115 socket to T111D and picture i-f circuits.
5. Dress the bodies of resistors R106, R108, R113, R119, R191, R192 and capacitor C176 as close to tube pin as possible.
6. Dress L114 with coded end as close to pin 2 of U105 socket as possible.
7. The length of the bus wire from pin 2 of V116 to ground should not be shortened or rerouted.
8. Dress R194 as close to chassis with leads as short as possible.
9. Dress C199 with leads as short as possible and away from S106.
10. Keep the leads on C126 as short and direct as possible.
11. Dress all components connected to V106 socket up and away from the chassis except L104.
12. Keep the body and coded end of L104 as close to pin 2 of V105 socket as possible.
13. Dress the 4.5 mc trap L107 up and away from the chassis base.
14. Dress C132 up in the air and towards V105 socket.
15. Dress R125 with body as close as possible to pin 2 of V106 socket.
16. Keep body of R123 as close as possible to pin 2 of V105 socket.
17. Dress C133 and C190 away from C132, C151 and C153.
18. Dress the white wire from picture control R128-3 away from the chassis.
19. Dress all slack on kine socket leads under chassis. Dress brown wire away from any components associated with V105 or V106.
20. The green lead from the kinescope socket should be dressed away from all other leads and components and away from V106.
21. Dress R133 towards chassis rear apron.
22. Dress all leads in clamps on rear apron away from V117, V104, V105, V106 sockets and S103.
23. Dress green wire from C147A up and away from chassis.
24. Dress blue wire of T107 toward front apron of chassis.
25. Dress C153 down next to the chassis base.
26. Dress blue/white wire from height control R151-3 under R180.
27. Dress R161, R162, R163, R164 and R170 up and away from the chassis and with a half inch clearance from the soldering point.
28. Dress the yellow wire from pin 3 of V110 socket over C153.
29. Dress both leads of C198 away from the body of the capacitor.
30. Dress fuse in high voltage compartment so as not to short circuit to ground.
31. Dress blue and blue/yellow wire from power transformer in 3 clamps on chassis base and away from S103 and video section.
32. Dress both wires on S106 away from blue/yellow damper leads of T110.
33. Dress the brown wire from pin 8 of V114 socket away from V118 socket.
34. Dress all 2 watt resistors away from each other and away from all wires and other components.

REPLACEMENT PARTS

9T57, 9T77, 9T79

STOCK No.	DESCRIPTION	STOCK No.	DESCRIPTION
	R-F UNIT ASSEMBLIES KRK 8B		
10705	Ball—Steel ball for detent (5/32 dia.)	74575	Screw—No. 4-40 x .359" adjusting screw for L42
75188	Board—Terminal board, 5 contact and ground	73640	Screw—No. 4-40 x 7/16" adjusting screw for L52
75067	Bracket—Vertical bracket for holding oscillator tube shield	75159	Shaft—Channel selector shaft and plate
75201	Cable—75 ohms, coax cable (7/4") complete with coil (W1, L50)	75160	Shaft—Fine tuning shaft and cam
75186	Capacitor—Ceramic, variable, for fine tuning—plunger type (C2)	75168	Shield—Oscillator and converter sections shield for RF unit—snap-on type
75289	Capacitor—Ceramic, 4 mmf., ± 0.5 mmf. (C4)	75193	Shield—Tube shield for V1
75189	Capacitor—Adjustable, 7-30 mmf. (C22)	75192	Shield—Tube shield for V2
75200	Capacitor—Ceramic, 12 mmf. (C24)	75088	Socket—Tube socket, 7 contact, miniature, ceramic, saddle mounted
45465	Capacitor—Ceramic, 15 mmf. (C3)	75191	Spacer—Insulating spacer for front plate (4 required)
75196	Capacitor—Ceramic, 39 mmf. (C5)	75163	Spring—Friction spring (formed) for fine tuning cam
75174	Capacitor—Ceramic, trimmer, 50-75 mmf. (C11)	75068	Spring—Retaining spring for oscillator tube shield
75199	Capacitor—Ceramic, 270 mmf. (C12, C13, C20)	74578	Spring—Retaining spring for adjusting screws
75641	Capacitor—Ceramic, 390 mmf. (C10)	73457	Spring—Return spring for fine tuning control
75166	Capacitor—Ceramic, 1500 mmf. (C6, C14, C15, C19)	30340	Spring—Hairpin spring for fine tuning link
75089	Capacitor—Ceramic, dual, 1500 mmf. (C17A, C17B)	75175	Stator—Oscillator section stator complete with rotor, segment, coils, adjusting screws and capacitors C3 and C23 (S1-1, C3, C23, L1, L2, L3, L4, L5, L6, L7, L8, L9, L10, L11, L43)
73748	Capacitor—Ceramic, 1500 mmf. (C18)	75178	Stator—Converter stator complete with rotor, coils, capacitors (C10 and C12) and resistors (R4 and R5) (S1-2, C10, C12, L12, L13, L14, L15, L16, L17, L18, L19, L20, L21, L45, R4, R5, R12)
73473	Capacitor—Ceramic, 5000 mmf. (C21)	75179	Stator—R-F amplifier stator complete with rotor, coils, capacitor (C13) and resistor (R6) (S1-3, C13, L22, L23, L24, L25, L26, L27, L28, L29, L30, L31, L49, R6)
75172	Capacitor—Tubular, steatite, adjustable, 0.8—1.4 mmf. (C7)	75180	Stator—Antenna stator complete with rotor, coils, capacitors (C20 and C21) and resistors (R9, R10, R11) (S1-4, C20, C21, L32, L33, L34, L35, L36, L37, L38, L39, L40, L41, L42, L52, R9, R10, R11)
71504	Capacitor—Ceramic, 0.68 mmf. (C23)	75169	Strip—Coil segment mounting strip—RH center
75184	Capacitor—Ceramic, adjustable, 0.75-4 mmf., complete with adjusting stud (C1)	75170	Strip—Coil segment mounting strip—LH lower
75197	Capacitor—Ceramic, 6.8 mmf. (C8)	75171	Strip—Coil segment mounting strip—LH upper—less trimmer C7
75167	Clip—Tubular clip for mounting stand-off capacitors (C8)	75173	Stud—No. 6-32 x 13/16" adjusting stud for C7 trimmer
75182	Coil—Trimmer coil (1½ turns) with adjustable inductance core and capacitor stud (screw adjustment) for converter section (C9, L47)	75446	Stud—Capacitor stud—brass—No. 4-40 x 13/16" with 3/64" screw driver slot for trimmer coils L47, L48 and capacitor C1 uncoded and coded "ER"
75183	Coil—Trimmer coil (3 turns) with adjustable inductance core and capacitor stud (screw adjustment) for r-f section (L48, C16)	75447	Stud—Capacitor stud—brass—No. 4-40 x 13/16" with 3/64" screw driver slot for trimmer coils L47, L48 and capacitor C1 coded numerically and "Hi Q"
75185	Coil—Converter plate loading coil (L44)	75181	Transformer—I-F converter transformer
75202	Coil—Choke coil .56 mh (L46)	75190	Washer—Insulating washer (neoprene) for capacitor C7
73477	Coil—Choke coil (L51)	75607	Washer—Insulating washer (hex)
75187	Core—Adjustable core for fine tuning capacitor C2		
75162	Detent—Detent mechanism and fibre shaft		CHASSIS ASSEMBLIES
73453	Form—Coil form for L45 and L49		KCS 49 OR KCS 49T—MODEL 9T57
75165	Link—Link assembly for fine tuning		KCS 49A OR KCS 49AT—MODELS 9T77-9T79
14343	Retainer—Fine tuning shaft retaining ring	75515	Bracket—Channel indicator lamp bracket
	Resistor—Fixed, composition:—	75228	Bracket—Focus magnet mounting bracket—upper
	27 ohms, $\pm 10\%$, ½ watt (R8)	75229	Bracket—Focus magnet mounting bracket—lower
	150 ohms, $\pm 20\%$, ½ watt (R10)	75646	Capacitor—Ceramic, 4.7 mmf., 5000 volts (C198)
	3300 ohms, $\pm 10\%$, ½ watt (R6)	75217	Capacitor—Mica trimmer, dual, 10-180 mmf. (C147A, C147B)
	3900 ohms, $\pm 10\%$, ½ watt (R9, R11)	53511	Capacitor—Ceramic, 10 mmf. (C128)
	8200 ohms, $\pm 10\%$, ½ watt (R12)	75450	Capacitor—Ceramic, 39 mmf. (C203)
	10,000 ohms, $\pm 5\%$, ½ watt (R3)	71924	Capacitor—Ceramic, 56 mmf. (C106)
	10,000 ohms, $\pm 20\%$, ½ watt (R2)	73090	Capacitor—Mica, 82 mmf. (C146, C148)
	22,000 ohms, $\pm 10\%$, ½ watt (R7)	75437	Capacitor—Ceramic, 100 mmf. (C202)
	100,000 ohms, $\pm 20\%$, ½ watt (R1, R4, R5)	45469	Capacitor—Ceramic, 100 mmf. (C120)
75164	Rod—Actuating plunger rod (fibre) for fine tuning link	39396	Capacitor—Ceramic, 100 mmf. (C126, C197, C220, C222)
71476	Screw—No. 4-40 x ¼" binder head machine screw for adjusting L6, L7, L8, L9, L10, L11		
75176	Screw—No. 4-40 x ⅜" fillister head screw for adjusting L5		
75177	Screw—No. 4-40 x 5/16" fillister head screw for adjusting L1, L2, L3, L4, L43		

9T57, 9T77, 9T79

REPLACEMENT PARTS (Continued)

STOCK No.	DESCRIPTION	STOCK No.	DESCRIPTION
73102	Capacitor—Mica, 180 mmf. (C153)	75210	Coil—Fifth pix, i-f coil complete with adjustable core (L103)
75244	Capacitor—Ceramic, 270 mmf. (176)	71449	Coil—Horizontal linearity coil (L110)
39638	Capacitor—Mica, 270 mmf. (C180)	73591	Coil—Antenna matching coil (2 required) (Part of T200)
73091	Capacitor—Mica, 270 mmf. (C107, C110, C117, C125)	75241	Coil—Antenna shunt coil (L202)
73094	Capacitor—Mica, 390 mmf. (C215) (in KCS49T and KCS49AT)	73477	Coil—Choke coil (L101, L102)
74947	Capacitor—Ceramic, 500 mmf., 20,000 volts (C161)	75299	Coil—Peaking coil (36 muh) (L104)
74250	Capacitor—Mica, 560 mmf. (C155)	71793	Coil—Peaking coil (36 muh) (L106)
75166	Capacitor—Ceramic, 1500 mmf. (C171, C172)	76285	Coil—Peaking coil (36 muh) (L114, R119)
73748	Capacitor—Ceramic, 1500 mmf. (C102, C103, C109, C113, C115, C116, C122, C129, C168, C186)	75253	Coil—Peaking coil (120 muh) (L109)
75089	Capacitor—Ceramic, dual, 1500 mmf. (C108A, C108B, C111A, C111B, C123A, C123B, C184A, C184B)	75252	Coil—Peaking coil (500 muh) (L105, L108)
73473	Capacitor—Ceramic, 5000 mmf. (C114, C121, C187)	76132	Coil—Peaking coil (500 muh) (L115 in KCS49T and KCS49AT)
73960	Capacitor—Ceramic, 10,000 mmf. (C144, C185, C192, C194, C195)	74594	Connector—2 contact male connector for power cord
75877	Capacitor—Ceramic, dual, 10,000 mmf. (C105A, C105B)	38853	Connector—4 contact female connector for antenna transformer (J200)
73747	Capacitor—Electrolytic, 2 mfd., 50 volts (C124)	5040	Connector—4 contact female connector for speaker cable
28417	Capacitor—Electrolytic, 5 mfd., 450 volts (C141)	35383	Connector—8 contact male connector—part of deflection yoke (P101)
75511	Capacitor—Electrolytic, comprising 1 section of 20 mfd., 450 volts, 1 section of 80 mfd., 200 volts, 1 section of 20 mfd., 200 volts and 1 section of 50 mfd., 50 volts (C213A, C213B, C213C, C213D)	68592	Connector—8 contact female connector for deflection yoke leads (J101)
75510	Capacitor—Electrolytic, comprising 2 sections of 35 mfd., 450 volts, 1 section of 10 mfd., 450 volts and 1 section of 5 mfd., 450 volts (C211A, C211B, C211C, C211D, C212A, C212B, C212C, C212D)	75517	Contact—Anode connector assembly contact only
75643	Capacitor—Tubular, moulded paper, oil impregnated, .001 mfd., 1000 volts (C156)	75215	Control—Horizontal and vertical hold control (R147, R166)
73598	Capacitor—Tubular, paper, oil impregnated, .0015 mfd., 600 volts (C130, C219)	75216	Control—Picture and brightness control for Model 9T57 (R128, R131)
73595	Capacitor—Tubular, paper, oil impregnated, .0022 mfd., 600 volts (C137, C191) (C216 in KCS49T and KCS49AT)	75514	Control—Picture control, brightness control and channel light switch for Models 9T77 & 9T79, (R128, R131, S105)
73599	Capacitor—Tubular, paper, oil impregnated, .0027 mfd., 600 volts (C189)	75513	Control—Tone control, volume control and power switch (R195, R197, S101)
73795	Capacitor—Tubular, paper, oil impregnated, .0033 mfd., 600 volts (C183)	71441	Control—Vertical linearity control (R156)
73920	Capacitor—Tubular, paper, oil impregnated, .0047 mfd., 600 volts (C138, C139, C177, C181)	71440	Control—Height control (R151)
73808	Capacitor—Tubular, paper, oil impregnated, .0082 mfd., 1000 volts (C188)	75516	Control—Width control (R177)
73561	Capacitor—Tubular, paper, oil impregnated, .01 mfd., 400 volts (C136, C178, C182)	71498	Core—Adjustable core and stud for F-M trap No. 75449
73594	Capacitor—Tubular, moulded paper, oil impregnated, .01 mfd., 600 volts (C140, C154)	74956	Cushion—Rubber cushion for deflection yoke hood (2 required)
73797	Capacitor—Tubular, paper, oil impregnated, .015 mfd., 600 volts (C179)	74839	Fastener—Push fastener to mount ceramic tube socket (2 required)
74727	Capacitor—Tubular, paper, oil impregnated, .018 mfd., 1000 volts (C159, C160)	73600	Fuse—.25 amp., 250 volts (F101)
73562	Capacitor—Tubular, paper, oil impregnated, .022 mfd., 400 volts (C145, C151)	16058	Grommet—Rubber grommet for 2nd. anode lead exit
73553	Capacitor—Tubular, paper, oil impregnated, .047 mfd., 400 volts (C149, C199, C221)	37396	Grommet—Rubber grommet to mount ceramic tube socket (2 required)
75071	Capacitor—Tubular, moulded paper, .047 mfd., 400 volts (C166, C167)	75445	Hood—Deflection yoke hood less rubber cushions
73592	Capacitor—Tubular, paper, oil impregnated, .047 mfd., 600 volts (C133, C150, C190)	75644	Insulator—2nd. anode insulator
73597	Capacitor—Tubular, moulded paper, oil impregnated, .047 mfd., 1000 volts (C143, C158, C162, C163)	35787	Jack—Phono input jack (J103)
73551	Capacitor—Tubular, paper, oil impregnated, 0.1 mfd., 400 volts (C132, C196)	75482	Jack—Video jack (J105)
73557	Capacitor—Tubular, paper, oil impregnated, 0.1 mfd., 600 volts (C134)	75504	Magnet—Focus magnet complete with adjustable plate and stud for standard 19AP4A tubes
73794	Capacitor—Tubular, paper, oil impregnated, 0.22 mfd., 400 volts (C157)	75935	Magnet—Focus magnet complete with adjustable plate and stud for special 19AP4A tubes coded with a dot of green paint
74957	Capacitor—Tubular, paper, oil impregnated, 0.22 mfd., 600 volts (C142)	76322	Magnet—Ion trap magnet (P.M.)
73787	Capacitor—Tubular, moulded paper, 0.47 mfd., 200 volts (C127, C135, C152)	75518	Plate—Hi-voltage plate—bakelite less transformer, capacitor and tube socket
73154	Choke—Filter choke (L113)	72087	Resistor—Wire wound, 5.1 ohms, ½ watt (R193)
75167	Clip—Tubular clip for mounting stand-off capacitor No. 75166	75512	Resistor—Wire wound, 4000 ohms, 10 watts (R181) Resistor—Fixed, composition:— 47 ohms, ±20%, ½ watt (R174) 82 ohms, ±10%, ½ watt (R103, R107, R112, R184) 100 ohms, ±10%, ½ watt (R217) 100 ohms, ±20%, ½ watt (R202, R203) 100 ohms, ±10%, 2 watts (R175) 180 ohms, ±10%, ½ watt (R116) 220 ohms, ±10%, ½ watt (R126, R127) 390 ohms, ±10%, 1 watt (R200) 470 ohms, ±10%, 1 watt (R218) 680 ohms, ±10%, ½ watt (R226)

REPLACEMENT PARTS (Continued)

9T57, 9T77, 9T79

STOCK No.	DESCRIPTION	STOCK No.	DESCRIPTION
	1000 ohms, $\pm 20\%$, $\frac{1}{2}$ watt (R102, R104, R109, R114, R117, R159, R185, R189, R219)		1 megohm, $\pm 10\%$, $\frac{1}{2}$ watt (R173)
	1500 ohms, $\pm 10\%$, 1 watt (R155)		1 megohm, $\pm 20\%$, $\frac{1}{2}$ watt (R178, R214)
	1800 ohms, $\pm 10\%$, $\frac{1}{2}$ watt (R113)		1.2 megohm, $\pm 5\%$, $\frac{1}{2}$ watt (R149)
	2200 ohms, $\pm 20\%$, $\frac{1}{2}$ watt (R140)		2.2 megohm, $\pm 10\%$, $\frac{1}{2}$ watt (R118, R153)
	3800 ohms, $\pm 10\%$, $\frac{1}{2}$ watt (R167)		3.9 megohm, $\pm 5\%$, $\frac{1}{2}$ watt (R148)
	4700 ohms, $\pm 5\%$, $\frac{1}{2}$ watt (R130)		10 megohm, $\pm 20\%$, $\frac{1}{2}$ watt (R194)
	4700 ohms, $\pm 10\%$, $\frac{1}{2}$ watt (R135) (R230 in KCS49T and KCS49AT)	74602	Screw—No. 10-32 x $\frac{13}{4}$ " round head machine screw for focus magnet adjustment (3 required)
	5600 ohms, $\pm 5\%$, $\frac{1}{2}$ watt (R125)	75236	Screw—No. 8-32 x $\frac{3}{8}$ " pan head screw (brass) to mount focus magnet (2 required)
	5600 ohms, $\pm 10\%$, $\frac{1}{2}$ watt (R235) (in KCS49T and KCS49AT)	75083	Screw—No. 8-32 x $\frac{1}{4}$ " wing screw for mounting deflection yoke
	6800 ohms, $\pm 10\%$, 1 watt (R120, R176)	73584	Shield—Tube shield
	6800 ohms, $\pm 10\%$, 2 watts (R133, R179)	31251	Socket—Tube socket, octal, wafer
	8200 ohms, $\pm 5\%$, $\frac{1}{2}$ watt (R106, R169)	73117	Socket—Tube socket, 7 pin, miniature
	8200 ohms, $\pm 10\%$, $\frac{1}{2}$ watt (R145, R146)	75223	Socket—Tube socket, 9 pin, miniature
	10,000 ohms, $\pm 10\%$, $\frac{1}{2}$ watt (R236) (in KCS49T and KCS49AT)	73249	Socket—Tube socket, octal, ceramic, plate mounted
	10,000 ohms, $\pm 10\%$, 2 watts (R207)	31319	Socket—Tube socket, octal, moulded
	12,000 ohms, $\pm 5\%$, $\frac{1}{2}$ watt (R152)	71508	Socket—Tube socket for 1B3/8016
	12,000 ohms, $\pm 10\%$, $\frac{1}{2}$ watt (R188) (R139 in KCS47 and KCS47A)	68592	Socket—Tube socket, 6 contact, moulded for V113
	12,000 ohms, $\pm 5\%$, 1 watt (R108)	74834	Socket—Kinescope socket
	12,000 ohms, $\pm 10\%$, 2 watts (R208, R209)	31364	Socket—Pilot light socket (Models 9T77 & 9T79)
	15,000 ohms, $\pm 10\%$, $\frac{1}{2}$ watt (R210)	75718	Socket—Channel indicator light socket (Mod 9T77 & 9T79)
	15,000 ohms, $\pm 10\%$, 2 watts (R216)	75233	Spring—Compression spring for focus magnet adjustment (3 required)
	18,000 ohms, $\pm 10\%$, $\frac{1}{2}$ watt (R121, R122, R137)	75506	Support—Bakelite support only—part of hi-voltage shield
	18,000 ohms, $\pm 10\%$, 1 watt (R138, R180)	76010	Switch—AGC switch (S106)
	22,000 ohms, $\pm 10\%$, $\frac{1}{2}$ watt (R143, R144, R186, R213)	33491	Switch—"TV Phono" switch (S103)
	22,000 ohms, $\pm 20\%$, $\frac{1}{2}$ watt (R192)	75508	Transformer—Power transformer 115 volts, 60 cycle (T110)
	27,000 ohms, $\pm 10\%$, $\frac{1}{2}$ watt (R196)	74950	Transformer—Vertical output transformer (T107)
	27,000 ohms, $\pm 10\%$, 2 watts (R182)	74144	Transformer—Vertical oscillator transformer (T106)
	33,000 ohms, $\pm 10\%$, $\frac{1}{2}$ watt (R105, R115, R201, R211, R225)	74589	Transformer—First pix, i-f transformer (T101, C101, R101)
	33,000 ohms, $\pm 20\%$, $\frac{1}{2}$ watt (R123)	74590	Transformer—Second pix, i-f transformer (T102, C104)
	39,000 ohms, $\pm 10\%$, 2 watts (R204, R205, R206)	76264	Transformer—Third pix, i-f transformer (T103, C112)
	47,000 ohms, $\pm 10\%$, $\frac{1}{2}$ watt (R141, R187, R222)	73574	Transformer—Fourth pix, i-f transformer (T104, C118)
	47,000 ohms, $\pm 20\%$, $\frac{1}{2}$ watt (R110)	75211	Transformer—Sound i-f transformer, single winding type (T111, C169, C170, R186)
	56,000 ohms, $\pm 10\%$, $\frac{1}{2}$ watt (R221) (R234 in KCS49T and KCS49AT)	71424	Transformer—Sound i-f transformer, dual winding type (T111, C169, C170)
	56,000 ohms, $\pm 10\%$, 1 watt (R215)	75212	Transformer—Sound discriminator transformer (T112, C173, C174, C175)
	68,000 ohms, $\pm 10\%$, 1 watt (R168)	75213	Transformer—Horizontal oscillator transformer (T108)
	82,000 ohms, $\pm 5\%$, 1 watt (R172)	75509	Transformer—Antenna matching transformer complete with antenna connector, i-f and F-M traps and shunt coil (T200, C200, C201, C202, C203, J200, L200, L201, L202, L203)
	82,000 ohms, $\pm 10\%$, 1 watt (R164, R165)	75585	Transformer—Hi-voltage transformer (T109)
	100,000 ohms, $\pm 5\%$, $\frac{1}{2}$ watt (R190, R191)	71778	Trap—Sound trap (T105, C119)
	100,000 ohms, $\pm 10\%$, $\frac{1}{2}$ watt (R224) (R233 in KCS49T and KCS49AT)	75251	Trap—4.5 mc trap (L107, C131)
	100,000 ohms, $\pm 20\%$, 2 watts (R183)	75242	Trap—I-F trap (L200, L201, C200, C201)
	150,000 ohms, $\pm 10\%$, $\frac{1}{2}$ watt (R136, R154, R160)	75449	Trap—F-M trap complete with adjustable core and stud (L203, C203)
	150,000 ohms, $\pm 20\%$, $\frac{1}{2}$ watt (R124)	74952	Yoke—Deflection yoke complete with cable and connector (L111, L112, C164, C165, P101)
	150,000 ohms, $\pm 5\%$, 1 watt (R170)		SPEAKER ASSEMBLIES
	180,000 ohms, $\pm 10\%$, $\frac{1}{2}$ watt (R142 in KCS49T and KCS49AT)		92580-4
	220,000 ohms, $\pm 10\%$, $\frac{1}{2}$ watt (R157, R158) (R134, R223, R231, R232 in KCS49T and KCS49AT)		(For Model 9T57).
	270,000 ohms, $\pm 10\%$, $\frac{1}{2}$ watt (R150)	75023	Cap—Dust cap
	330,000 ohms, $\pm 10\%$, $\frac{1}{2}$ watt (R161, R198)	75024	Cone—Cone complete with voice coil (3.2 ohms)
	330,000 ohms, $\pm 5\%$, 1 watt (R163)	5039	Connector—4 contact male connector (J101)
	390,000 ohms, $\pm 10\%$, $\frac{1}{2}$ watt (R142, R223 in KCS49 and KCS49A)	75022	Speaker—8" P.M. speaker complete with cone and voice coil less plug and transformer
	470,000 ohms, $\pm 10\%$, $\frac{1}{2}$ watt (R111)		
	470,000 ohms, $\pm 20\%$, $\frac{1}{2}$ watt (R199)		
	560,000 ohms, $\pm 10\%$, $\frac{1}{2}$ watt (R129) (R134 in KCS49 and KCS49A)		
	820,000 ohms, $\pm 10\%$, $\frac{1}{2}$ watt (R162, R220)		

9T57, 9T77, 9T79

REPLACEMENT PARTS (Continued)

STOCK No.	DESCRIPTION	STOCK No.	DESCRIPTION
75520	Transformer—Output transformer (T112) NOTE:—If stamping on speaker in instruments does not agree with above speaker number, order replacement parts by referring to model number of instrument, number stamped on speaker and full description of part required. SPEAKER ASSEMBLIES 92569-11W RL 111 A2 (For Models 9T77, 9T79)	75455	Escutcheon—Channel marker escutcheon—dark—for mahogany or walnut instruments (Models 9T77 & 9T79)
13867	Cap—Dust cap	75456	Escutcheon—Channel marker escutcheon—light—for oak instruments (Models 9T77 & 9T79)
74901	Cone—Cone and voice coil assembly (3.2 ohms)	72113	Foot—Rubber foot (Model 9T57)
5039	Connector—4 contact male connector for speaker (J102)	75619	Glass—Safety glass
74974	Speaker—12" P.M. speaker complete with cone and voice coil less output transformer and connector	37396	Grommet—Rubber grommet for mounting speaker (4 required) (Models 9T77 & 9T79)
75520	Transformer—Output transformer (T113) NOTE:—If stamping on speaker in instruments does not agree with above speaker number, order replacement parts by referring to model number of instrument, number stamped on speaker and full description of part required. SPEAKER ASSEMBLIES 92569-11B (For Models 9T77, 9T79)	756.1	Hinge—Control panel hinges (1 set) (Model 9T57)
75875	Cone—Cone and voice coil assembly (3.2 ohms) SPEAKER ASSEMBLIES 92569-11K RMA-252 (For Models 9T77, 9T79)	74308	Hinge—Cabinet door hinge (1 set) (Models 9T77 & 9T79)
75642	Cone—Cone and voice coil assembly (3.2 ohms) MODEL 9CB1 STAND (Used with 9T57 Instrument)	74959	Knob—Fine tuning knob—maroon—for mahogany or walnut instruments (outer)
76008	Caster—Caster and socket assembly	75461	Knob—Fine tuning knob—beige—for oak instruments (outer)
76097	Catch—Door catch and strike (1 set)	74960	Knob—Channel selector knob—maroon—for mahogany or walnut instruments (inner)
76096	Hinge—Door hinge (1 set)	75462	Knob—Channel selector knob—beige—for oak instruments (inner)
76095	Pull—Door pull	74962	Knob—Tone control, brightness control or vertical hold control knob—maroon—for mahogany or walnut instruments (outer)
74113	Screw—No. 8-32 x 1" trimit head screw for door pull MISCELLANEOUS	75463	Knob—Tone control, brightness control or vertical hold control knob—beige—for oak instruments (outer)
75586	Back—Cabinet back complete with power cord and terminal board (Model 9T57)	74963	Knob—Picture control, horizontal hold control or volume control and power switch knob—maroon—for mahogany or walnut instruments (inner)
75589	Back—Cabinet back complete with power cord and terminal board (Models 9T77 & 9T79)	75464	Knob—Picture control, horizontal hold control or volume control and power switch knob—beige—for oak instruments (inner)
75473	Board—"Ant" terminal board	11765	Lamp—Pilot or channel indicator lamp—Mazda 51 (Models 9T77 & 9T79)
75465	Bracket—Mounting brackets for deflection yoke and focus magnet support assembly (Models 9T57 & 9T77)	75459	Mask—Channel indicator light mask—burgundy—for mahogany or walnut instruments (Models 9T77 & 9T79)
75524	Bracket—Mounting bracket for deflection yoke and focus magnet support assembly (Model 9T79)	75460	Mask—Channel indicator light mask—gold—for oak instruments (Models 9T77 & 9T79)
71599	Bracket—Pilot lamp bracket (Models 9T77 & 9T79)	73634	Nut—Speed nut for speaker mounting screws (4 required) (Models 9T77 & 9T79)
13103	Cap—Pilot lamp cap (Models 9T77 & 9T79)	75622	Pull—Door pull (Model 9T77)
71892	Catch—Bullet catch and strike for doors (Models 9T77 & 9T79)	75624	Pull—Door pull for lower doors (Model 9T79)
X1917	Cloth—Grille cloth for mahogany or walnut instruments (Model 9T57)	75625	Pull—Door pull for upper doors (Model 9T79)
X1918	Cloth—Grille cloth for oak instruments (Model 9T57)	71456	Screw—No. 8-32 x 7/16" wing screw for deflection yoke and focus magnet mounting support
X3093	Cloth—Grille cloth for oak instruments (Models 9T77 & 9T79)	71623	Screw—No. 8-32 x 5/8" trimit head screw for door pull (Model 9T77)
X3144	Cloth—Grille cloth for mahogany or walnut instruments (Models 9T77 & 9T79)	74113	Screw—No. 8-32 x 1" trimit head screw for door pull on lower doors (Model 9T79)
39153	Connector—4 contact male connector for antenna cable	75626	Screw—No. 8-32 x 1 1/4" trimit head screw for door pull on upper doors (Model 9T79)
75474	Connector—Single contact male connector for antenna cable (2 required)	73643	Spring—Spring clip for channel marker escutcheons
71457	Cord—Power cord and plug	75587	Spring—Formed spring for mounting Kinescope masking panel
75608	Cushion—Dust seal cushion—rubber	72845	Spring—Retaining spring for knobs 74959 & 75461
71984	Decal—"RCA Victor" decal (Models 9T57 & 9T77)	14270	Spring—Retaining spring for knobs 74960, 74962, 75462 & 75463
75618	Decal—Control function decal (Model 9T57)	30330	Spring—Retaining spring for knobs 74963 & 7546
75440	Decal—Control function decal for mahogany or walnut instruments (Models 9T77 & 9T79)	72936	Stop—Cabinet door stop (Models 9T77 & 9T79)
75441	Decal—Control function decal for oak instruments (Model 9T77)	75500	Washer—Felt washer for cabinet back screws
74809	Emblem—"RCA Victor" emblem	75457	Washer—Felt washer—dark brown—between knob and channel marker escutcheon for mahogany or walnut instruments (Models 9T77 & 9T79)
75499	Escutcheon—Channel marker escutcheon—dark—for mahogany or walnut instruments (Model 9T57)	75458	Washer—Felt washer—beige—between knob and channel marker escutcheon for oak instruments (Models 9T77 & 9T79)
75501	Escutcheon—Channel marker escutcheon—light—for oak instruments (Model 9T57)		

To obtain resistors for which no stock number is given, order by stating type, value of resistance, tolerance and wattage.

APPLY TO YOUR RCA DISTRIBUTOR FOR PRICES OF REPLACEMENT PARTS